

## Product datasheet for **TP319138M**

### Epac1 (RAPGEF3) (NM\_001098532) Human Recombinant Protein

#### Product data:

Product Type:	Recombinant Proteins
Description:	Recombinant protein of human Rap guanine nucleotide exchange factor (GEF) 3 (RAPGEF3), transcript variant 3, 100 µg
Species:	Human
Expression Host:	HEK293T
Expression cDNA Clone or AA Sequence:	>RC219138 representing NM_001098532 Red=Cloning site Green=Tags(s)

MVLRMRHRPRSCSYQLLEHQRPSCIQGLRWTPLTNSEESLDFSESLEQASTERVLRAGRQLHRHLLATC  
PNLIRDKEYHLRLYRQCCSGRELVDGILALGLGVHSRSQVVGICQVLLDEGALCHVKHDWAFQDRDAQFY  
RFPGPEPEPVGTHEMEEELAEAVALLSQRGPDALLTVALRKPPGQRTDEELDLIFEELLHIKAVAHLSNS  
VKRELAAVLLFEPHASKAGTVLFSQGDKGTSWYIIWKGSVNVVTHGKGLVTTLHEGDDFGQLALVNDAPRA  
ATIILREDNCHFLRVKQDFNRIIKDVEAKTMRLEEKGKVVLVLERASQGAGPSRPPTPGRNRYTVMSGT  
PEKILELLEAMGPDSSAHDPTETFLSDFLLTHRVFMPSAQLCAALLHFFHVPEAGGSEQRSTYVCNKR  
QQILRLVSQWVALYGSMLHTDPVATSFLQKLSLDLVGRDTRLSNLLREQWPERRRCHRLENGCGNASPQMK  
ARNLPVWLPNQDEPLPGSSCAIQVGDKVPYDICRPDHSVLTQLPVTASVREVMAALAQEDGWTKGQVLV  
KVNSAGDAIGLQPDARGVATSLGLNERLFWNPQEVHELIPHPDQLGPTVGSAGEGLDLVSAKDLAQQLTD  
HDWSLFNSIHQVELIHYVLGPQHLRDVTTANLERFMRRFNEQLYWWATELCLCPVPGPRAQLLRKFIKLA  
AHLKEQKNLNSFFAVMFGLSNSAISRLAHTWERLPHKVRKLYSALERLLDPSWNHRVYRLALAKLSPPI  
PFMPLLLKDMTFIHEGNHTLVENLINFKMRMMARAARMLHHCRRSHNPVPLSPLRSRVSHLHEDSQVARI  
STCSEQSLSTRSPASTWAYVQQLKVIDNQRELSRLSRELEP

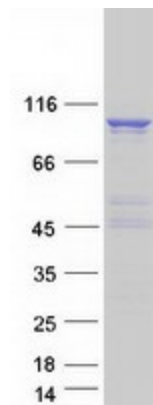
TRTRPLEQKLISEEDLAANDILDYKDDDDKV

Tag:	C-Myc/DDK
Predicted MW:	99.2 kDa
Concentration:	>0.05 µg/µL as determined by microplate BCA method
Purity:	> 80% as determined by SDS-PAGE and Coomassie blue staining
Buffer:	25 mM Tris-HCl, 100 mM glycine, pH 7.3, 10% glycerol
Preparation:	Recombinant protein was captured through anti-DDK affinity column followed by conventional chromatography steps.



[View online »](#)

<b>Note:</b>	For testing in cell culture applications, please filter before use. Note that you may experience some loss of protein during the filtration process.
<b>Storage:</b>	Store at -80°C.
<b>Stability:</b>	Stable for 12 months from the date of receipt of the product under proper storage and handling conditions. Avoid repeated freeze-thaw cycles.
<b>RefSeq:</b>	<a href="#">NP_001092002</a>
<b>Locus ID:</b>	10411
<b>UniProt ID:</b>	<a href="#">O95398</a> , <a href="#">Q99777</a>
<b>RefSeq Size:</b>	3425
<b>Cytogenetics:</b>	12q13.11
<b>RefSeq ORF:</b>	2643
<b>Synonyms:</b>	bcm910; CAMP-GEFI; EPAC; EPAC1; HSU79275
<b>Summary:</b>	Guanine nucleotide exchange factor (GEF) for RAP1A and RAP2A small GTPases that is activated by binding cAMP. Through simultaneous binding of PDE3B to RAPGEF3 and PIK3R6 is assembled in a signaling complex in which it activates the PI3K gamma complex and which is involved in angiogenesis. Plays a role in the modulation of the cAMP-induced dynamic control of endothelial barrier function through a pathway that is independent on Rho-mediated signaling. Required for the actin rearrangement at cell-cell junctions, such as stress fibers and junctional actin.[UniProtKB/Swiss-Prot Function]
<b>Protein Pathways:</b>	Leukocyte transendothelial migration, Long-term potentiation

**Product images:**


Coomassie blue staining of purified RAPGEF3 protein (Cat# [TP319138]). The protein was produced from HEK293T cells transfected with RAPGEF3 cDNA clone (Cat# [RC219138]) using MegaTran 2.0 (Cat# [TT210002]).