

Product datasheet for **TP319131M**

CD1B (NM_001764) Human Recombinant Protein

Product data:

Product Type:	Recombinant Proteins
Description:	Recombinant protein of human CD1b molecule (CD1B), 100 µg
Species:	Human
Expression Host:	HEK293T
Expression cDNA Clone or AA Sequence:	>RC219131 protein sequence Red =Cloning site Green =Tags(s)
	<p>MLLLPFQLLAVLFPGGNSEHAFQGPTSFHVIQTSSFTNSTWAQTQGGSWLDDLQIHGWSDSGTAIFLKP WSKGNFSDKEVAELEEIFRVYIFGFAREVQDFAGDFQMYPFEIQGIAGCELHSGGAIVSFLRGALGGLD FLSVKNASCVPSPPEGGSRAQKFCALIIYQYGIMETVRILLYETCPRYLLGVLNAGKADLQRQVKPEAWLS SGPSPGPGRLQLVCHVSGFYKPKVWVMWMRGEQEQQGTQLGDILPNANWTWYLRATLDVADGEEAAGLSCR VKHSSLEGQDIILYWRNPTSIGSIVLAIIVPSLLLLLCLALWYMRRRSYQNIP</p> <p>TRTRPLEQKLISEEDLAANDILDYKDDDDKV</p>
Tag:	C-Myc/DDK
Predicted MW:	35.1 kDa
Concentration:	>0.05 µg/µL as determined by microplate BCA method
Purity:	> 80% as determined by SDS-PAGE and Coomassie blue staining
Buffer:	25 mM Tris-HCl, 100 mM glycine, pH 7.3, 10% glycerol
Preparation:	Recombinant protein was captured through anti-DDK affinity column followed by conventional chromatography steps.
Note:	For testing in cell culture applications, please filter before use. Note that you may experience some loss of protein during the filtration process.
Storage:	Store at -80°C.
Stability:	Stable for 12 months from the date of receipt of the product under proper storage and handling conditions. Avoid repeated freeze-thaw cycles.
RefSeq:	<u>NP_001755</u>
Locus ID:	910



[View online »](#)

UniProt ID: [P29016](#)

RefSeq Size: 1396

Cytogenetics: 1q23.1

RefSeq ORF: 999

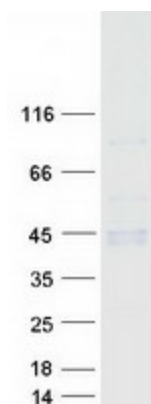
Synonyms: CD1; CD1A; R1

Summary: This gene encodes a member of the CD1 family of transmembrane glycoproteins, which are structurally related to the major histocompatibility complex (MHC) proteins and form heterodimers with beta-2-microglobulin. The CD1 proteins mediate the presentation of primarily lipid and glycolipid antigens of self or microbial origin to T cells. The human genome contains five CD1 family genes organized in a cluster on chromosome 1. The CD1 family members are thought to differ in their cellular localization and specificity for particular lipid ligands. The protein encoded by this gene localizes to late endosomes and lysosomes via a tyrosine-based motif in the cytoplasmic tail, and requires vesicular acidification to bind lipid antigens. [provided by RefSeq, Jul 2008]

Protein Families: Druggable Genome, Transmembrane

Protein Pathways: Hematopoietic cell lineage

Product images:



Coomassie blue staining of purified CD1B protein (Cat# [TP319131]). The protein was produced from HEK293T cells transfected with CD1B cDNA clone (Cat# [RC219131]) using MegaTran 2.0 (Cat# [TT210002]).