

Product datasheet for TP319122L

IGFBPL1 (NM_001007563) Human Recombinant Protein

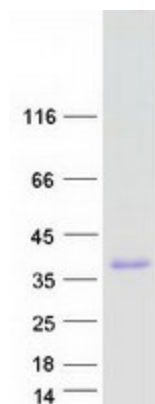
Product data:

Product Type:	Recombinant Proteins
Description:	Recombinant protein of human insulin-like growth factor binding protein-like 1 (IGFBPL1), 1 mg
Species:	Human
Expression Host:	HEK293T
Expression cDNA Clone or AA Sequence:	>RC219122 representing NM_001007563 Red =Cloning site Green =Tags(s) MPRLSLLLPLLLLLLLPLLPPLSPSLGIRDVGGRRPKGCPCRPEGCPAPAPCPAPGISALDECGCCARCL GAEGASCGGRAGGRCGPLVCASQAAGAAPEGTGLCVCAQRGTVCSDGRSYPSVCALRLRARHTPRAH P GHLHKARDGPCEFAPVVVPPRSVHNVTGAQVGLSCEVRVPTPVITWRKVTKSPEGTQALEELPGDHVN IAVQVRGGPSDHEATAWILINPLRKEDEGVYQCHAANMVGAEASHSTVTVLDLSKYRSFHFAPDDRM TRTRPLEQKLISEEDLAANDILDYKDDDDKV
Tag:	C-Myc/DDK
Predicted MW:	28.8 kDa
Concentration:	>0.05 µg/µL as determined by microplate BCA method
Purity:	> 80% as determined by SDS-PAGE and Coomassie blue staining
Buffer:	25 mM Tris-HCl, 100 mM glycine, pH 7.3, 10% glycerol
Preparation:	Recombinant protein was captured through anti-DDK affinity column followed by conventional chromatography steps.
Note:	For testing in cell culture applications, please filter before use. Note that you may experience some loss of protein during the filtration process.
Storage:	Store at -80°C.
Stability:	Stable for 12 months from the date of receipt of the product under proper storage and handling conditions. Avoid repeated freeze-thaw cycles.
RefSeq:	<u>NP_001007564</u>
Locus ID:	347252


[View online »](#)

UniProt ID:	<u>Q8WX77</u>
RefSeq Size:	1093
Cytogenetics:	9p13.1
RefSeq ORF:	834
Synonyms:	bA113O24.1; IGFBP-RP4; IGFBPRP4
Summary:	IGF-binding proteins prolong the half-life of IGFs and have been shown to either inhibit or stimulate the growth promoting effects of the IGFs in cell culture. They alter the interaction of IGFs with their cell surface receptors (By similarity). May be a putative tumor suppressor protein.[UniProtKB/Swiss-Prot Function]

Product images:



Coomassie blue staining of purified IGFBPL1 protein (Cat# [TP319122]). The protein was produced from HEK293T cells transfected with IGFBPL1 cDNA clone (Cat# [RC219122]) using MegaTran 2.0 (Cat# [TT210002]).