

## Product datasheet for **TP319097L**

### **EFCAB4B (CRACR2A) (NM\_032680) Human Recombinant Protein**

#### **Product data:**

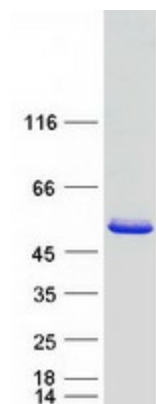
<b>Product Type:</b>	Recombinant Proteins
<b>Description:</b>	Recombinant protein of human EF-hand calcium binding domain 4B (EFCAB4B), transcript variant 3, 1 mg
<b>Species:</b>	Human
<b>Expression Host:</b>	HEK293T
<b>Expression cDNA Clone or AA Sequence:</b>	>RC219097 representing NM_032680 <b>Red</b> =Cloning site <b>Green</b> =Tags(s)
	<p>MAAPDGRVSRPQRLGQSGQGPKGSGACLHPLDSLEQKETQEQTSGQLVMLRKAQEFFQTCD AEGKG FI ARKDMQRLHKELPLSLEELEDVFDALDADGNGYLTPQEFTTGFSHFFFSQNNPSQEDAGEQVAQRHEEK V YLSRGDEDLGDMGEDEEAQFRMLMDRLGAQKVLESDVKQLWLQLKKEEPHLLSNFEDFLTRIISQLQE AHEEKNELECALKRKIAAYDEEIQHLYEEMEQQIKSEKEQFLLKDTERFQARSQELEQKLLCKEQEQL TQKQKRLEGQCTALHHDKHETKAENTKLKLTNQELARELERTSWELQDAQQQLSQQEACKLHQEKE ME VYRVTESLQREKAGLLKQLDFLRVGGHWPVLRAPPRSLGSEGPV</p> <p><b>TRTRPLEQKLISEEDLAANDILDYKDDDDKV</b></p>
<b>Tag:</b>	C-Myc/DDK
<b>Predicted MW:</b>	45.4 kDa
<b>Concentration:</b>	>0.05 µg/µL as determined by microplate BCA method
<b>Purity:</b>	> 80% as determined by SDS-PAGE and Coomassie blue staining
<b>Buffer:</b>	25 mM Tris-HCl, 100 mM glycine, pH 7.3, 10% glycerol
<b>Preparation:</b>	Recombinant protein was captured through anti-DDK affinity column followed by conventional chromatography steps.
<b>Note:</b>	For testing in cell culture applications, please filter before use. Note that you may experience some loss of protein during the filtration process.
<b>Storage:</b>	Store at -80°C.



[View online »](#)

<b>Stability:</b>	Stable for 12 months from the date of receipt of the product under proper storage and handling conditions. Avoid repeated freeze-thaw cycles.
<b>RefSeq:</b>	<u>NP_116069</u>
<b>Locus ID:</b>	84766
<b>UniProt ID:</b>	<u>Q9BSW2</u>
<b>RefSeq Size:</b>	2204
<b>Cytogenetics:</b>	12p13.32
<b>RefSeq ORF:</b>	1185
<b>Synonyms:</b>	EFCAB4B
<b>Summary:</b>	Ca(2+)-binding protein that plays a key role in store-operated Ca(2+) entry (SOCE) in T-cells by regulating CRAC channel activation. Acts as a cytoplasmic calcium-sensor that facilitates the clustering of ORAI1 and STIM1 at the junctional regions between the plasma membrane and the endoplasmic reticulum upon low Ca(2+) concentration. It thereby regulates CRAC channel activation, including translocation and clustering of ORAI1 and STIM1. Upon increase of cytoplasmic Ca(2+) resulting from opening of CRAC channels, dissociates from ORAI1 and STIM1, thereby destabilizing the ORAI1-STIM1 complex.[UniProtKB/Swiss-Prot Function]

### Product images:



Coomassie blue staining of purified CRACR2A protein (Cat# [TP319097]). The protein was produced from HEK293T cells transfected with CRACR2A cDNA clone (Cat# [RC219097]) using MegaTran 2.0 (Cat# [TT210002]).