

Product datasheet for TP319074M

SEC24B (NM_001042734) Human Recombinant Protein

Product data:

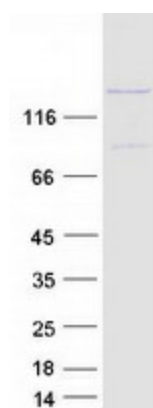
Product Type:	Recombinant Proteins
Description:	Recombinant protein of human SEC24 family, member B (<i>S. cerevisiae</i>) (SEC24B), transcript variant 2, 100 µg
Species:	Human
Expression Host:	HEK293T
Expression cDNA Clone or AA Sequence:	>RC219074 representing NM_001042734 Red=Cloning site Green=Tags(s)
	<p>MSAPAGSSHPAASARIPPKFGGA AVSGAAAPAGPGAGPAPHQONGPAQNQM QVPSGYGLHHQNYIAPSGH YSQGP GKMTSLPLDTQCGDYYSALYTVPTQNVTPNTVNQQPGAQQLYSRGPPAPHIVGSTLGSFQGAASS ASHLHTSASQPYSSFVNHYNSPAMYSASSSVASQGFSTCGHYAMSTVSNAAYPVSYPPLPAGDTYGM FTSQNAPTVRPVKDNSFSGQNTAISHPSPLPPLPSQQHHQQQLSGYSTLTWSSPGLPSTQDNLIRNHTG SLAVANNNTITVADSLSCPVMQNVQPPKSSPVVSTVLSGSSGSSSTRTPPTANHPVEPVTSVTQPSSELL QQKGVDSSTTSSASPMPNSYDALEGGSPDMLSSSASSPAPDPAPEPD PASAPAPASAPVVPQPSKM AKPFGYGYPTLQPGYQ NATAPLISGVQPSNPVYSGFQQYPPQYPGVNQLSSSIGL SLQSSQPESLRPV NLTQERNILPMTPVWAPV PNLNADLKKLNCSPDSFRCTLTNIPQTQALLNKAKLPLGLLLHPPFRDLTQLP VITSNTIVRCRSCRTYINPFV SFIDQRRWKC NL CYRVNDVPEEFMYNPLTRSYGEPHKRPEVQNSTVEFI ASSDYMLRPPQPAVYLFVLDVSHNAVEAGYL TILCQS LLENLDKLP GDSRTRIGFMTFDSTIHFY NLQEG LSQPQMLIVSDIDDVFLPTPDSLLVNLYESKELIKDLLNALPNMFTNTRETHSALGPALQAAFKLMSPTG GRVSVFQTQLPSLGAGLLQSREDPNQRSSTKV VQHLGPATDFYKKLALDCSGQQTAVDLFLLSSQYSDLA SLACMSKYSAGCIYYPSFH YTHNPSQAEKLQKDLKRYL TRKIGFEAVMRIRCTKGLSMHTFHGNFFVRS TDLLSLANINPDAGFAVQLSIEESLTDTSLVCFQTALLYTSSKGERRIRVHTLCLPVSSSLADVYAGVDV QAAICLLANMAVDRSVSSSLDARDALVNAVVDSLSAYGSTVSNLQHSALMAPSSKLFLPLYVLALLKQK AFRTGTSTRLDDR VYAMCQIKSQPLVHLMKMIHPNLYRIDRLTDEGAVHVNDRIVQPPLQKLSAEKLTR EGAFLMDCGSVFYIWWGKGC DNNFIEDVLGYTNFASIPQK MTHLPELDTLSSERARSFITWLRDSRPLSP ILHIVKDESPA KAEFFQH LIEDRTEAAFSYEFLLHVQQQICK</p> <p>TRTRPLEQKLISEEDLAANDILDYKDDDDKV</p>
Tag:	C-Myc/DDK
Predicted MW:	133.4 kDa
Concentration:	>0.05 µg/µL as determined by microplate BCA method



[View online »](#)

Purity:	> 80% as determined by SDS-PAGE and Coomassie blue staining
Buffer:	25 mM Tris-HCl, 100 mM glycine, pH 7.3, 10% glycerol
Preparation:	Recombinant protein was captured through anti-DDK affinity column followed by conventional chromatography steps.
Note:	For testing in cell culture applications, please filter before use. Note that you may experience some loss of protein during the filtration process.
Storage:	Store at -80°C.
Stability:	Stable for 12 months from the date of receipt of the product under proper storage and handling conditions. Avoid repeated freeze-thaw cycles.
RefSeq:	NP_001036199
Locus ID:	10427
UniProt ID:	O95487
RefSeq Size:	4544
Cytogenetics:	4q25
RefSeq ORF:	3699
Synonyms:	SEC24
Summary:	The protein encoded by this gene is a member of the SEC24 subfamily of the SEC23/SEC24 family, which is involved in vesicle trafficking. The encoded protein is thought to be a cargo-binding component of the COPII vesicle, and is thought to be involved in the transport of secretory proteins from the endoplasmic reticulum to the Golgi apparatus. Mutations in this gene have been associated with neural tube defects, and are thought to be a result of a disruption in interactions with the protein encoded by the VANGL planar cell polarity protein 2 (VANGL2) gene. Alternative splicing results in multiple transcript variants encoding different isoforms. [provided by RefSeq, Dec 2015]

Product images:



Coomassie blue staining of purified SEC24B protein (Cat# [TP319074]). The protein was produced from HEK293T cells transfected with SEC24B cDNA clone (Cat# [RC219074]) using MegaTran 2.0 (Cat# [TT210002]).