

## Product datasheet for **TP319060M**

### **MADCAM1 (NM\_130760) Human Recombinant Protein**

#### Product data:

|                                       |  |
|---------------------------------------|--|
| Product Type:                         | Recombinant Proteins   |
| Description:                          | Recombinant protein of human mucosal vascular addressin cell adhesion molecule 1 (MADCAM1), transcript variant 1, 100 µg |
| Species:                              | Human  |
| Expression Host:                      | HEK293T  |
| Expression cDNA Clone or AA Sequence: | >RC219060 representing NM_130760<br><b>Red</b> =Cloning site <b>Green</b> =Tags(s)                                       |

MDFGLALLLAGLLGLLLGQSLQVKPLQVEPPEPWWAVALGASRQLTCRLACADRGASVQWRGLDTSLGAV  
 QSDTGRSVLTVRNASLSAAGTRVCVGS CGGRTFQHTVQLLVYAFDQLTVSPAALVPGDPEVACTAHKVT  
 PVDPNALSFSLLVGGQELEGAQALGPEVQEEEEEPQGEDVLFVRVTERWRLPPLGTPVPPALYCQATMRL  
 PGLELSHRQAIPVLHSPTSPEPPNNTSPEPPNNTSPESDNTSPEPPDNTSPEPPDKTSPEPAPQQGSTH  
 TPRSPGSTRTRRPEISQAGPTQGEVIPTGSSKPA GDQLPAALWTSSAVLGLLLLALPTYHLWKRCRHLAE  
 DDTHPPASLRLLPQVSAWAGLRGTGQVGISPS

**TRTRPLEQKLISEEDLAANDILDYKDDDDKV**

|                |  |
|----------------|--|
| Tag:           | C-Myc/DDK  |
| Predicted MW:  | 38.3 kDa   |
| Concentration: | >0.05 µg/µL as determined by microplate BCA method   |
| Purity:        | > 80% as determined by SDS-PAGE and Coomassie blue staining  |
| Buffer:        | 25 mM Tris-HCl, 100 mM glycine, pH 7.3, 10% glycerol   |
| Preparation:   | Recombinant protein was captured through anti-DDK affinity column followed by conventional chromatography steps.                                     |
| Note:          | For testing in cell culture applications, please filter before use. Note that you may experience some loss of protein during the filtration process. |
| Storage:       | Store at -80°C.  |
| Stability:     | Stable for 12 months from the date of receipt of the product under proper storage and handling conditions. Avoid repeated freeze-thaw cycles.        |
| RefSeq:        | <u><a href="#">NP_570116</a></u>   |



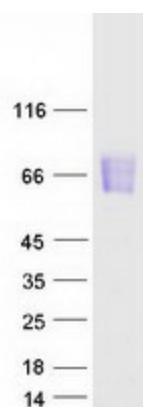
[View online »](#)

|               |                        |
|---------------|------------------------|
| Locus ID:     | 8174                   |
| UniProt ID:   | <a href="#">Q13477</a> |
| RefSeq Size:  | 1546                   |
| Cytogenetics: | 19p13.3                |
| RefSeq ORF:   | 1146                   |
| Synonyms:     | MACAM1                 |

**Summary:** The protein encoded by this gene is an endothelial cell adhesion molecule that interacts preferentially with the leukocyte beta7 integrin LPAM-1 (alpha4beta7), L-selectin, and VLA-4 (alpha4beta1) on myeloid cells to direct leukocytes into mucosal and inflamed tissues. It is a member of the immunoglobulin family and is similar to ICAM1 and VCAM1. At least seven alternatively spliced transcripts encoding different protein isoforms have been found for this gene, but the full-length nature of some variants has not been determined. [provided by RefSeq, Jul 2008]

**Protein Pathways:** Cell adhesion molecules (CAMs)

### Product images:



Coomassie blue staining of purified MADCAM1 protein (Cat# [TP319060]). The protein was produced from HEK293T cells transfected with MADCAM1 cDNA clone (Cat# [RC219060]) using MegaTran 2.0 (Cat# [TT210002]).