

Product datasheet for **TP319060L**

MADCAM1 (NM_130760) Human Recombinant Protein

Product data:

Product Type:	Recombinant Proteins
Description:	Recombinant protein of human mucosal vascular addressin cell adhesion molecule 1 (MADCAM1), transcript variant 1, 1 mg
Species:	Human
Expression Host:	HEK293T
Expression cDNA Clone or AA Sequence:	>RC219060 representing NM_130760 Red =Cloning site Green =Tags(s)

MDFGLALLLAGLLGLLLGQSLQVKPLQVEPPEPWAVALGASRQLTCRLACADRGASVQWRGLDTSLGAV
QSDTGRSVLTVRNASLSAAGTRVCVGSCGGRTFQHTVQLLVYAFDQLTVSPAALVPGDPEVACTAHKVT
PVDPNALSFSLLVGGQELEGAQALGPEVQEEEEEPQGEDVLFVRVTERWRLPPLGTPVPPALYCQATMRL
PGLLELSHRQAIPVLHSPTSPEPPNNTSPEPPNNTSPESPDTTSPPEPDTTSPEPPDKTSPEPAPQQGSTH
TPRSPGSTRTRRPEISQAGPTQGEVIPTGSSKPAQDQLPAALWTSSAVLGLLLLALPTYHLWKRCRHLAE
DDTHPPASLRLLPQVSAWAGLRGTGQVGISPS

TRTRPLEQKLISEEDLAANDILDYKDDDDKV

Tag:	C-Myc/DDK
Predicted MW:	38.3 kDa
Concentration:	>0.05 µg/µL as determined by microplate BCA method
Purity:	> 80% as determined by SDS-PAGE and Coomassie blue staining
Buffer:	25 mM Tris-HCl, 100 mM glycine, pH 7.3, 10% glycerol
Preparation:	Recombinant protein was captured through anti-DDK affinity column followed by conventional chromatography steps.
Note:	For testing in cell culture applications, please filter before use. Note that you may experience some loss of protein during the filtration process.
Storage:	Store at -80°C.
Stability:	Stable for 12 months from the date of receipt of the product under proper storage and handling conditions. Avoid repeated freeze-thaw cycles.
RefSeq:	<u>NP_570116</u>



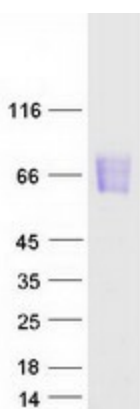
[View online »](#)

Locus ID:	8174
UniProt ID:	Q13477
RefSeq Size:	1546
Cytogenetics:	19p13.3
RefSeq ORF:	1146
Synonyms:	MACAM1

Summary: The protein encoded by this gene is an endothelial cell adhesion molecule that interacts preferentially with the leukocyte beta7 integrin LPAM-1 (alpha4beta7), L-selectin, and VLA-4 (alpha4beta1) on myeloid cells to direct leukocytes into mucosal and inflamed tissues. It is a member of the immunoglobulin family and is similar to ICAM1 and VCAM1. At least seven alternatively spliced transcripts encoding different protein isoforms have been found for this gene, but the full-length nature of some variants has not been determined. [provided by RefSeq, Jul 2008]

Protein Pathways: Cell adhesion molecules (CAMs)

Product images:



Coomassie blue staining of purified MADCAM1 protein (Cat# [TP319060]). The protein was produced from HEK293T cells transfected with MADCAM1 cDNA clone (Cat# [RC219060]) using MegaTran 2.0 (Cat# [TT210002]).