

Product datasheet for **TP319050M**

GSDMA (NM_178171) Human Recombinant Protein

Product data:

Product Type: Recombinant Proteins

Description: Recombinant protein of human gasdermin A (GSDMA), 100 µg

Species: Human

Expression Host: HEK293T

Expression cDNA Clone or AA Sequence: >RC219050 protein sequence
Red=Cloning site **Green**=Tags(s)

MTMFENVTRALARQLNPRGDLTPLDSLIDFKRFHPFCLVLRKRKSTLFWGARYVRTDYTLDDVLEPGSSP
SDPTDTGNFGFNMLDTRVEGDVDVPKTVKVKGTAGLSQNSTLEVQTLVAPKALETLQERKLAADHPFL
KEMQDQGENLYVMEVETVQVTLERAGKAEACFSLPFFAPLGLQGSINHKEAVTIKGCVLAFRVRQL
MVKGKDEWDIPHICNDNMQTFPPGEKSGEEKVILIQASDVGDVHEGFRTLKEEVQRETQQVEKLSRVGQS
SLLSSLSKLLGKKKELQDLELALEGALDKGHEVNLEALPKDVLLSKEAVGAILYFVGALTESEAQQKLL
VKSMKILPVQLKLVESTMEQNFLDKEGVFPLQPELLSSLGDEELTLTEALVGLSGLEVQRSGPYQMW
DPDTLPRCALYAGLSLLQLTKAS

TRTRPLEQKLISEEDLAANDILDYKDDDDKV

Tag: C-Myc/DDK

Predicted MW: 49.2 kDa

Concentration: >0.05 µg/µL as determined by microplate BCA method

Purity: > 80% as determined by SDS-PAGE and Coomassie blue staining

Buffer: 25 mM Tris-HCl, 100 mM glycine, pH 7.3, 10% glycerol

Preparation: Recombinant protein was captured through anti-DDK affinity column followed by conventional chromatography steps.

Note: For testing in cell culture applications, please filter before use. Note that you may experience some loss of protein during the filtration process.

Storage: Store at -80°C.

Stability: Stable for 12 months from the date of receipt of the product under proper storage and handling conditions. Avoid repeated freeze-thaw cycles.

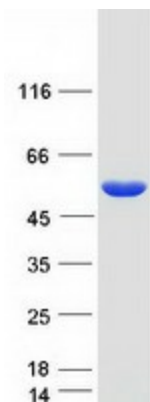
RefSeq: [NP_835465](#)



[View online »](#)

Locus ID:	284110
UniProt ID:	Q96QA5
RefSeq Size:	2164
Cytogenetics:	17q21.1
RefSeq ORF:	1335
Synonyms:	FKSG9; GSDM; GSDM1
Summary:	May promote pyroptosis (Probable). Upon cleavage in vitro of genetically engineered GSDMA, the released N-terminal moiety binds to some types of lipids, such as possibly phosphatidylinositol (4,5)-bisphosphate. Homooligomerizes within the membrane and forms pores of 10 -15 nanometers (nm) of inner diameter, triggering cell death. Also binds to bacterial and mitochondrial lipids, including cardiolipin, and exhibits bactericidal activity (PubMed:27281216). The physiological relevance of these observations is unknown (Probable).[UniProtKB/Swiss-Prot Function]

Product images:



Coomassie blue staining of purified GSDMA protein (Cat# [TP319050]). The protein was produced from HEK293T cells transfected with GSDMA cDNA clone (Cat# [RC219050]) using MegaTran 2.0 (Cat# [TT210002]).