

Product datasheet for TP319050

GSDMA (NM_178171) Human Recombinant Protein

Product data:

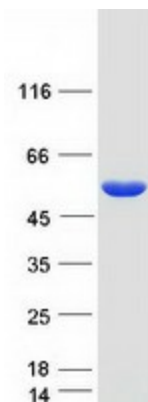
Product Type:	Recombinant Proteins
Description:	Recombinant protein of human gasdermin A (GSDMA), 20 µg
Species:	Human
Expression Host:	HEK293T
Expression cDNA Clone or AA Sequence:	>RC219050 protein sequence Red =Cloning site Green =Tags(s)
	<p>MTMFENVTRALARQLNPRGDLTPLDSLIDFKRFHPFCLVLRKRKSTLFWGARYVRTDYTLDDVLEPGSSP SDPTDTGNFGFNMLDTRVEGDVDVPKTVKVKGTAGLSQNSTLEVQTLVAPKALETLQERKLAADHPFL KEMQDQGENLYVMEVETVQVTLERAGKAEACFSLPFFAPLGLQGSINHKEAVTIKGCVLAFRVRQL MVKGKDEWDIPHICNDNMQTFPPGEEKSVILIQASDVGDVHEGFRTLKEEVQRETQQVEKLSRVGQS SLLSSLSKLLGKKKELQDLELALEGALDKGHEVNLEALPKDVLLSKEAVGAILYFVGALTESEAQQKLL VKSMKILPVQLKLVESTMEQNFLDKKEGVFPLQPELLSSLGDEELTLTEALVGLSGLEVQRSGPQYMW DPDTLPRCALYAGLSLLQLTKAS</p> <p>TRTRPLEQKLISEEDLAANDILDYKDDDDKV</p>
Tag:	C-Myc/DDK
Predicted MW:	49.2 kDa
Concentration:	>0.05 µg/µL as determined by microplate BCA method
Purity:	> 80% as determined by SDS-PAGE and Coomassie blue staining
Buffer:	25 mM Tris-HCl, 100 mM glycine, pH 7.3, 10% glycerol
Preparation:	Recombinant protein was captured through anti-DDK affinity column followed by conventional chromatography steps.
Note:	For testing in cell culture applications, please filter before use. Note that you may experience some loss of protein during the filtration process.
Storage:	Store at -80°C.
Stability:	Stable for 12 months from the date of receipt of the product under proper storage and handling conditions. Avoid repeated freeze-thaw cycles.
RefSeq:	<u>NP_835465</u>



[View online »](#)

Locus ID:	284110
UniProt ID:	Q96QA5
RefSeq Size:	2164
Cytogenetics:	17q21.1
RefSeq ORF:	1335
Synonyms:	FKSG9; GSDM; GSDM1
Summary:	May promote pyroptosis (Probable). Upon cleavage in vitro of genetically engineered GSDMA, the released N-terminal moiety binds to some types of lipids, such as possibly phosphatidylinositol (4,5)-bisphosphate. Homooligomerizes within the membrane and forms pores of 10 -15 nanometers (nm) of inner diameter, triggering cell death. Also binds to bacterial and mitochondrial lipids, including cardiolipin, and exhibits bactericidal activity (PubMed:27281216). The physiological relevance of these observations is unknown (Probable).[UniProtKB/Swiss-Prot Function]

Product images:



Coomassie blue staining of purified GSDMA protein (Cat# TP319050). The protein was produced from HEK293T cells transfected with GSDMA cDNA clone (Cat# [RC219050]) using MegaTran 2.0 (Cat# [TT210002]).