

## Product datasheet for **TP319046M**

### **C11orf85 (MAJIN) (NM\_001037225) Human Recombinant Protein**

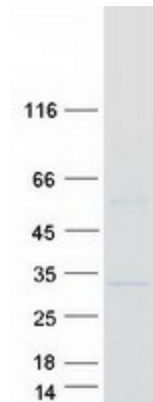
#### Product data:

Product Type:	Recombinant Proteins
Description:	Recombinant protein of human chromosome 11 open reading frame 85 (C11orf85), 100 µg
Species:	Human
Expression Host:	HEK293T
Expression cDNA Clone or AA Sequence:	>RC219046 protein sequence <span style="color: red;">Red</span> =Cloning site <span style="color: green;">Green</span> =Tags(s)  MSLKPFTYFPETRFLHAGPNVYKFKIRYGKSIRGEEIENKEVITQELEDSSVRVVLGNLDNLQPFATEHF IVFPYKSKWERSHLKFKHGEIILIPYPFVFTLYVEMKWFHENLSPGKPISDSPLGLVPVEKKAVGAVMR KRKHMDEPSSPSRPGLDRIKKEKPNKDCRRLWPLISLMSRNKILSGDTACQGELSHPCSTTHLHLRSEQP PASLGF  <span style="color: red;">TR</span> <span style="color: green;">TRPLEQKLISEEDLAANDILDYKDDDDKV</span>
Tag:	C-Myc/DDK
Predicted MW:	24.6 kDa
Concentration:	>0.05 µg/µL as determined by microplate BCA method
Purity:	> 80% as determined by SDS-PAGE and Coomassie blue staining
Buffer:	25 mM Tris-HCl, 100 mM glycine, pH 7.3, 10% glycerol
Preparation:	Recombinant protein was captured through anti-DDK affinity column followed by conventional chromatography steps.
Note:	For testing in cell culture applications, please filter before use. Note that you may experience some loss of protein during the filtration process.
Storage:	Store at -80°C.
Stability:	Stable for 12 months from the date of receipt of the product under proper storage and handling conditions. Avoid repeated freeze-thaw cycles.
RefSeq:	<u><a href="#">NP_001032302</a></u>
Locus ID:	283129
UniProt ID:	<u><a href="#">Q3KP22</a></u>


[View online »](#)

RefSeq Size:	1291
Cytogenetics:	11q13.1
RefSeq ORF:	648
Synonyms:	C11orf85
Summary:	Meiosis-specific telomere-associated protein involved in meiotic telomere attachment to the nucleus inner membrane, a crucial step for homologous pairing and synapsis. Component of the MAJIN-TERB1-TERB2 complex, which promotes telomere cap exchange by mediating attachment of telomeric DNA to the inner nuclear membrane and replacement of the protective cap of telomeric chromosomes: in early meiosis, the MAJIN-TERB1-TERB2 complex associates with telomeric DNA and the shelterin/telosome complex. During prophase, the complex matures and promotes release of the shelterin/telosome complex from telomeric DNA. In the complex, MAJIN acts as the anchoring subunit to the nucleus inner membrane. MAJIN shows DNA-binding activity, possibly for the stabilization of telomere attachment on the nucleus inner membrane.[UniProtKB/Swiss-Prot Function]

### Product images:



Coomassie blue staining of purified MAJIN protein (Cat# [TP319046]). The protein was produced from HEK293T cells transfected with MAJIN cDNA clone (Cat# [RC219046]) using MegaTran 2.0 (Cat# [TT210002]).