

Product datasheet for **TP319035L**

Clathrin light chain (CLTA) (NM_007096) Human Recombinant Protein

Product data:

Product Type:	Recombinant Proteins
Description:	Recombinant protein of human clathrin, light chain (Lca) (CLTA), transcript variant 2, 1 mg
Species:	Human
Expression Host:	HEK293T
Expression cDNA Clone or AA Sequence:	>RC219035 representing NM_007096 Red =Cloning site Green =Tags(s)
	<p>MAELDPFGAPAGAPGGPALGNGVAGAGEEDPAAAFQAQSEIAGIENDEAFAILDGGAPGPQPHGPEPPG GPDAVDGVMNGEYYQESNGPTDSYAAISQVDRQLQSEPEIRKRWEEQMERLEALDANSRKQEAWEKKEAI KELEEWYARQDEQLQKTKANNRVADEAFYKQPFADVIGYVTNINHPCYSLEQAEEAFVNDIDESSPGTE WERVARLCDNFNPKSSKQAKDVSRMRSVLISLKQAPLVH</p> <p>TRTRPLEQKLISEEDLAANDILDYKDDDDKV</p>
Tag:	C-Myc/DDK
Predicted MW:	26.9 kDa
Concentration:	>0.05 µg/µL as determined by microplate BCA method
Purity:	> 80% as determined by SDS-PAGE and Coomassie blue staining
Buffer:	25 mM Tris-HCl, 100 mM glycine, pH 7.3, 10% glycerol
Preparation:	Recombinant protein was captured through anti-DDK affinity column followed by conventional chromatography steps.
Note:	For testing in cell culture applications, please filter before use. Note that you may experience some loss of protein during the filtration process.
Storage:	Store at -80°C.
Stability:	Stable for 12 months from the date of receipt of the product under proper storage and handling conditions. Avoid repeated freeze-thaw cycles.
RefSeq:	NP_009027
Locus ID:	1211
UniProt ID:	P09496



[View online »](#)

RefSeq Size: 1105

Cytogenetics: 9p13.3

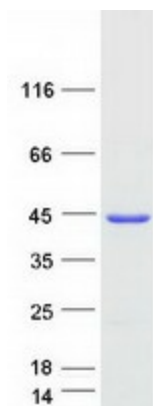
RefSeq ORF: 744

Synonyms: LCA

Summary: Clathrin is a large, soluble protein composed of heavy and light chains. It functions as the main structural component of the lattice-type cytoplasmic face of coated pits and vesicles which entrap specific macromolecules during receptor-mediated endocytosis. This gene encodes one of two clathrin light chain proteins which are believed to function as regulatory elements. Alternative splicing results in multiple transcript variants. Related pseudogenes have been identified on chromosomes 8 and 12. [provided by RefSeq, May 2010]

Protein Pathways: Endocytosis, Huntington's disease, Lysosome

Product images:



Coomassie blue staining of purified CLTA protein (Cat# [TP319035]). The protein was produced from HEK293T cells transfected with CLTA cDNA clone (Cat# [RC219035]) using MegaTran 2.0 (Cat# [TT210002]).