

Product datasheet for **TP319007M**

bcl 6 (BCL6) (NM_001706) Human Recombinant Protein

Product data:

Product Type:	Recombinant Proteins
Description:	Recombinant protein of human B-cell CLL/lymphoma 6 (BCL6), transcript variant 1, 100 µg
Species:	Human
Expression Host:	HEK293T
Expression cDNA Clone or AA Sequence:	>RC219007 representing NM_001706 Red =Cloning site Green =Tags(s)

MASPADSCIQFTRHASDVLNLRSLRSDILTDVIVVSREQFRAHKTVLMACSGLFYSIFTDQLKCNLS
VINLDPEINPEGFCILLDFMYTSRLNLRGNIMAVMATAMYLQMEHVVDTCRKFIKASEAEMVSAIKPPR
EEFLNSRMLMPQDIMAYRGREVVENLPLRSAPGCESRAFAPSLYGLSTPPASYSMYSHLPVSSLLFSD
EEFRDVRMPVANPFPKERALPCDSARPVPGEYSRPTLEVSPNVCHSNISPKETIPEARSMDMHYSVAEG
LKPAAPSARNAPYFPCDKASKEEERPSSEDEIALHFEPNAPLNRKGLVSPQSPQKSDCQPNSPTESCSS
KNACILQASGSPPAKSPTDPKACNWKYKFIVLNSLNQNAKPEGPEQAEGRSPRAYTAPPACQPPMEP
ENLDLQSPTKLSASGEDSTIPQASRLNNIVNRSMTGSPRSSSESHSPLYMHPPKCTSCGSQSPQHAEMCL
HTAGPTFPEEMGETQSEYSDSSCENGAFFCNECDCRFSEEASLKRHTLQTHSDKPYKCDRCQASFRYKGN
LASHKTVHTGEKPYRCNICGAQFNRPANLKTHTRIHSGEKPYKCETCGARFVQVAHLRAHVLIHTGEKPY
PCEICGTRFRHLQTLKSHLRIHTGEKPYHCEKCNLHFRHKSQRLRLHLRQKHGAI TTKVQYRVSATDLPP
ELPKAC

TRTRPLEQKLISEEDLAANDILDYKDDDDKV

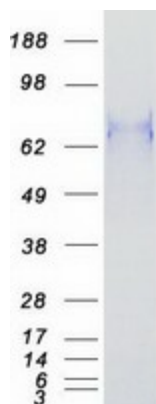
Tag:	C-Myc/DDK
Predicted MW:	78.7 kDa
Concentration:	>0.05 µg/µL as determined by microplate BCA method
Purity:	> 80% as determined by SDS-PAGE and Coomassie blue staining
Buffer:	25 mM Tris-HCl, 100 mM glycine, pH 7.3, 10% glycerol
Preparation:	Recombinant protein was captured through anti-DDK affinity column followed by conventional chromatography steps.
Note:	For testing in cell culture applications, please filter before use. Note that you may experience some loss of protein during the filtration process.
Storage:	Store at -80°C.



[View online »](#)

Stability:	Stable for 12 months from the date of receipt of the product under proper storage and handling conditions. Avoid repeated freeze-thaw cycles.
RefSeq:	NP_001697
Locus ID:	604
UniProt ID:	P41182
RefSeq Size:	3537
Cytogenetics:	3q27.3
RefSeq ORF:	2118
Synonyms:	BCL5; BCL6A; LAZ3; ZBTB27; ZNF51
Summary:	The protein encoded by this gene is a zinc finger transcription factor and contains an N-terminal POZ domain. This protein acts as a sequence-specific repressor of transcription, and has been shown to modulate the transcription of STAT-dependent IL-4 responses of B cells. This protein can interact with a variety of POZ-containing proteins that function as transcription corepressors. This gene is found to be frequently translocated and hypermutated in diffuse large-cell lymphoma (DLCL), and may be involved in the pathogenesis of DLCL. Alternatively spliced transcript variants encoding different protein isoforms have been found for this gene. [provided by RefSeq, Aug 2015]
Protein Families:	Druggable Genome, Transcription Factors

Product images:



Coomassie blue staining of purified BCL6 protein (Cat# [TP319007]). The protein was produced from HEK293T cells transfected with BCL6 cDNA clone (Cat# [RC219007]) using MegaTran 2.0 (Cat# [TT210002]).