

Product datasheet for **TP319005M**

GAB1 (NM_002039) Human Recombinant Protein

Product data:

Product Type:	Recombinant Proteins
Description:	Recombinant protein of human GRB2-associated binding protein 1 (GAB1), transcript variant 2, 100 µg
Species:	Human
Expression Host:	HEK293T
Expression cDNA Clone or AA Sequence:	>RC219005 representing NM_002039 Red =Cloning site Green =Tags(s)

MSGGEVVC SGWLRKSPPEKCLKRYAWKRRWFVLRSGRLTGDPDVLEYYKNDHAKKPIRIIDLNLCCQVDA
GLTFNKKEFENSYIFDINTIDRIFYLVADSEEMNKWVRCICDICGFNPTEEDPVKPPGSSLQAPADLPL
AINTAPPSTQADSSATLPPPYQLINVPHPHLETGLIQEDPQDYLLINCQSKKPEPTRTHADSAKSTSSE
TDCNDNVPSHKNPASSQSKHGMNGFFQQMIYDSPSRAPSASVDSSLYNLPRSYSHDVLPKVSPSSTE
DGELYVFNTPSGTSSVETQMRHVSISYDIPPTPGNTYQIPRTFPEGTLGQTSKLDITIPDIPPRPPKPHP
AHDRSPVETCSIPRTASDTDSSYCIPTAGMSPSRNTISTVDLNKLRKDASSQDCYDIPRAFPSDRSSSL
EGFHNHFVKVKNLTVGVSSEELDENYVPMNPNPSPRQHSSSFTEPIQEANYVPMTPGTFDFSSFGMQVP
PPAHMGRSSPKTPRRPVPVADCEPPPVDRLNPKDRKVKPAPLEIKPLPEWEELQAPVRSPITRSFARD
SSRFPMSRPDSVHSTSSSDSHDSEENYVPMNPNLSSDPNLFGSNSLDGGSSPMIKPKGDKQVEYLDL
DLDSGKSTPPRKQKSSGSGSSVADERVDYVVDQKQTLALKSTREAWTDGRQSTESETPAKSVK

TRTRPLEQKLISEEDLAANDILDYKDDDDKV

Tag:	C-Myc/DDK
Predicted MW:	76.4 kDa
Concentration:	>0.05 µg/µL as determined by microplate BCA method
Purity:	> 80% as determined by SDS-PAGE and Coomassie blue staining
Buffer:	25 mM Tris-HCl, 100 mM glycine, pH 7.3, 10% glycerol
Preparation:	Recombinant protein was captured through anti-DDK affinity column followed by conventional chromatography steps.
Note:	For testing in cell culture applications, please filter before use. Note that you may experience some loss of protein during the filtration process.
Storage:	Store at -80°C.



[View online »](#)

Stability: Stable for 12 months from the date of receipt of the product under proper storage and handling conditions. Avoid repeated freeze-thaw cycles.

RefSeq: [NP_002030](#)

Locus ID: 2549

UniProt ID: [Q13480](#), [Q9HA84](#)

RefSeq Size: 3323

Cytogenetics: 4q31.21

RefSeq ORF: 2082

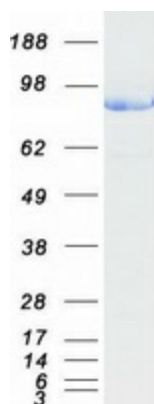
Synonyms: DFNB26

Summary: The protein encoded by this gene is a member of the IRS1-like multisubstrate docking protein family. It is an important mediator of branching tubulogenesis and plays a central role in cellular growth response, transformation and apoptosis. Two transcript variants encoding different isoforms have been found for this gene. [provided by RefSeq, Aug 2008]

Protein Families: Druggable Genome

Protein Pathways: ErbB signaling pathway, Neurotrophin signaling pathway, Renal cell carcinoma

Product images:



Coomassie blue staining of purified GAB1 protein (Cat# [TP319005]). The protein was produced from HEK293T cells transfected with GAB1 cDNA clone (Cat# [RC219005]) using MegaTran 2.0 (Cat# [TT210002]).