

## Product datasheet for **TP318993M**

### SPINT1 (NM\_181642) Human Recombinant Protein

#### Product data:

Product Type:	Recombinant Proteins
Description:	Recombinant protein of human serine peptidase inhibitor, Kunitz type 1 (SPINT1), transcript variant 1, 100 µg
Species:	Human
Expression Host:	HEK293T
Expression cDNA Clone or AA Sequence:	>RC218993 representing NM_181642 <b>Red</b> =Cloning site <b>Green</b> =Tags(s)

MAPARTMARARLAPAGIPAVALWLLCTLGLQGTQAGPPPAPPGLPAGADCLNSFTAGVPGFVLDTNASVS  
NGATFLESPTVRRGWDCVRACCTTQNCNLALVELQPDRGEDAIAACFLINCLYEQNFVCKFAPREGFINY  
LTREVYSYRQLRTQGFSGGIPKAWAGIDLKVPQEPVLVKDVENTDWRLLRGDTDVRVERKDPNQVEL  
WGLKEGYLFLQTLVTSSDHPEDTANVTVTVLSTKQTEDYCLASNKVGRCRGSFPRWYYDPTEQICKSFVY  
GGCLGNKNNYLREEECILACRGVQGGPLRGSSGAQATFPQGSMERRHPVCSGTCQPTQFRCSSNGCCIDS  
FLECDTNPNDASDEAAACEKYTSGFDELQRIHFPSDKGHCVDLPDTGLCKESIPRWYYPFSEHCARFT  
YGGCYGNKNNFEEEQCLESCRGISKKDVFLRREIPISTGSMEMAVAVFLVICIVVVVAILGYCFFKN  
QRKDFHGHHHHPPTPASSTVSTTEDTEHLVYNHTRPL

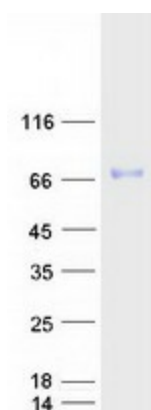
**TRTRPLEQKLISEEDLAANDILDYKDDDDKV**

Tag:	C-Myc/DDK
Predicted MW:	54.8 kDa
Concentration:	>0.05 µg/µL as determined by microplate BCA method
Purity:	> 80% as determined by SDS-PAGE and Coomassie blue staining
Buffer:	25 mM Tris-HCl, 100 mM glycine, pH 7.3, 10% glycerol
Preparation:	Recombinant protein was captured through anti-DDK affinity column followed by conventional chromatography steps.
Note:	For testing in cell culture applications, please filter before use. Note that you may experience some loss of protein during the filtration process.
Storage:	Store at -80°C.



[View online »](#)

<b>Stability:</b>	Stable for 12 months from the date of receipt of the product under proper storage and handling conditions. Avoid repeated freeze-thaw cycles.
<b>RefSeq:</b>	<a href="#">NP_857593</a>
<b>Locus ID:</b>	6692
<b>UniProt ID:</b>	<a href="#">O43278</a>
<b>RefSeq Size:</b>	2484
<b>Cytogenetics:</b>	15q15.1
<b>RefSeq ORF:</b>	1587
<b>Synonyms:</b>	HAI; HAI1; MANSC2
<b>Summary:</b>	The protein encoded by this gene is a member of the Kunitz family of serine protease inhibitors. The protein is a potent inhibitor specific for HGF activator and is thought to be involved in the regulation of the proteolytic activation of HGF in injured tissues. Alternative splicing results in multiple variants encoding different isoforms. [provided by RefSeq, Jul 2008]
<b>Protein Families:</b>	Druggable Genome, Secreted Protein, Transmembrane

**Product images:**

Coomassie blue staining of purified SPINT1 protein (Cat# [TP318993]). The protein was produced from HEK293T cells transfected with SPINT1 cDNA clone (Cat# [RC218993]) using MegaTran 2.0 (Cat# [TT210002]).