

Product datasheet for **TP318965SE**

IL28B (IFNL3) (NM_172139) Human Recombinant Protein

Product data:

Product Type:	Recombinant Proteins
Description:	Purified recombinant protein of Human interleukin 28B (interferon, lambda 3) (IL28B), secretory expressed in HEK293T cells, 20ug
Species:	Human
Expression Host:	HEK293T
Expression cDNA Clone or AA Sequence:	>RC218965 representing NM_172139 Red =Cloning site Green =Tags(s)
	<p>MTGDCMPVLVLMMAVLTVTGAVPVARLRGALPDARGCHIAQFKLSLPQELQAFKRAKDALEESLLLDCK CRSRLFPRTWDLRQLQVRERPVALEAELALTLKVLEATADTDPALGDVLDQPLHLHHILSQLRACIQPQ PTAGPRTRGRLHHLHRLQEAPKKESPGCLEASVTFNLFRLLRDLNLCVASGDLCV</p> <p>TRTRPLEQKLISEEDLAANDILDYKDDDDKV</p>
Tag:	C-Myc/DDK
Predicted MW:	23.2 kDa
Concentration:	>50 ug/mL as determined by microplate Bradford method
Purity:	> 80% as determined by SDS-PAGE and Coomassie blue staining
Buffer:	25mM Tris-HCl, pH7.3, 100mM glycine, 10% glycerol
Note:	For culture applications, please filter before use. Note that you may experience some loss of protein during the filtration process.
Storage:	Store at -80°C after receiving vials.
Stability:	Stable for at least 1 year from receipt of products under proper storage and handling conditions. Avoid repeated freeze-thaw cycles.
RefSeq:	<u>NP_742151</u>
Locus ID:	282617
UniProt ID:	<u>Q8IZI9</u>
RefSeq Size:	595
Cytogenetics:	19q13.2



[View online »](#)

RefSeq ORF: 588

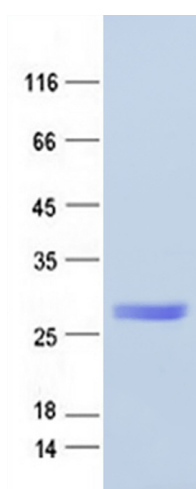
Synonyms: IFN-lambda-3; IFN-lambda-4; IL-28B; IL-28C; IL28B; IL28C

Summary: This gene encodes a cytokine distantly related to type I interferons and the IL-10 family. This gene, interleukin 28A (IL28A), and interleukin 29 (IL29) are three closely related cytokine genes that form a cytokine gene cluster on a chromosomal region mapped to 19q13. Expression of the cytokines encoded by the three genes can be induced by viral infection. All three cytokines have been shown to interact with a heterodimeric class II cytokine receptor that consists of interleukin 10 receptor, beta (IL10RB) and interleukin 28 receptor, alpha (IL28RA). [provided by RefSeq, Jul 2008]

Protein Families: Druggable Genome, Secreted Protein, Transmembrane

Protein Pathways: Cytokine-cytokine receptor interaction, Jak-STAT signaling pathway

Product images:



Coomassie blue staining of purified IFNL3 protein (Cat #TP318965SE). The protein was produced from mammalian cells transfected with IFNL3 cDNA clone (Cat #[RC218965]).