

Product datasheet for **TP318963L**

C1S (NM_001734) Human Recombinant Protein

Product data:

Product Type:	Recombinant Proteins
Description:	Recombinant protein of human complement component 1, s subcomponent (C1S), transcript variant 2, 1 mg
Species:	Human
Expression Host:	HEK293T
Expression cDNA Clone or AA Sequence:	>RC218963 representing NM_001734 Red=Cloning site Green=Tags(s)

MWCIVLFSLLAWVYAEPMTYGEILSPNYPQAYPSEVEKSWDIEVPEGYGIHLYFTHLDIELSENCAYDSV
QIISGDTEEGRLCGQRSSNPHSPIVEEFQVPYNKLQVIFKSDFSNEERFTGFAAYVATDINECTDFVD
VPCSHFCNNFIGGYFCSCPPEYFLHDDMKNCGVNCSGDVFTALIGEIASPNYPKYPENSRCYQIRLEK
GFQVVVTLRREDFDVEAADSAGNCLDSL VFVAGDRQFGPYCGHGFPGPLNIETKSNALDIIFQTDLTGQK
KGWKLRYHGDPMPCPKEDTPNSWEPAAKAKYVFRD VVQITCLDGFVEVGRV GATSFYSTCQSN GKWSNS
KLKQCQPVDCGIPES IEN GKVEDPESTLFGSVIRYTC EEPY Y M E N G G G G E Y H C A N G S W V N E V L G P E L P K
CVPVCGVPREPFEEKQRIIGGSDADIKNFPWQVFFDNPWAGGALINEYWVLTAAHVVEGNREPTMYVGST
SVQTSRLAKSKMLTPEHVFHHPGWKLLVPEGRTNFDNDIALVRLKDPVKMGPTVSPICLPGTSSDYNLM
DGD LGLISGWGRTEKRDRAVRLKAARLPVAPLRKCKEVEKVEKPTADAEAYVFTPNMICAGGEKGMDSCKG
DSGGFAVQDPNDKTKFYAAGLVSWGPQC GTYGLYTRVKNYVDWIMKTMQENSTPRED

TRTRPLEQKLISEEDLAANDILDYKDDDDKV

Tag:	C-Myc/DDK
Predicted MW:	74.8 kDa
Concentration:	>0.05 µg/µL as determined by microplate BCA method
Purity:	> 80% as determined by SDS-PAGE and Coomassie blue staining
Buffer:	25 mM Tris-HCl, 100 mM glycine, pH 7.3, 10% glycerol
Preparation:	Recombinant protein was captured through anti-DDK affinity column followed by conventional chromatography steps.
Note:	For testing in cell culture applications, please filter before use. Note that you may experience some loss of protein during the filtration process.
Storage:	Store at -80°C.



[View online »](#)

Stability: Stable for 12 months from the date of receipt of the product under proper storage and handling conditions. Avoid repeated freeze-thaw cycles.

RefSeq: [NP_001725](#)

Locus ID: 716

UniProt ID: [P09871](#)

RefSeq Size: 2714

Cytogenetics: 12p13.31

RefSeq ORF: 2064

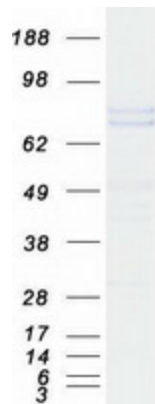
Synonyms: EDSPD2

Summary: This gene encodes a serine protease, which is a major constituent of the human complement subcomponent C1. C1s associates with two other complement components C1r and C1q in order to yield the first component of the serum complement system. Defects in this gene are the cause of selective C1s deficiency. [provided by RefSeq, Mar 2009]

Protein Families: Druggable Genome, Protease

Protein Pathways: Complement and coagulation cascades, Systemic lupus erythematosus

Product images:



Coomassie blue staining of purified C1S protein (Cat# [TP318963]). The protein was produced from HEK293T cells transfected with C1S cDNA clone (Cat# [RC218963]) using MegaTran 2.0 (Cat# [TT210002]).