

## Product datasheet for TP318963

### C1S (NM\_001734) Human Recombinant Protein

#### Product data:

Product Type:	Recombinant Proteins
Description:	Recombinant protein of human complement component 1, s subcomponent (C1S), transcript variant 2, 20 µg
Species:	Human
Expression Host:	HEK293T
Expression cDNA Clone or AA Sequence:	>RC218963 representing NM_001734 <b>Red</b> =Cloning site <b>Green</b> =Tags(s)

MWCIVLFSLLAWVYA EPTMYGEILSPNYPQAYPSEVEKSWDIEVPEGYGIHLYFTHLDIELSENCAYDSV  
 QIISGDTEEGRLCGQRSSNPHSPIVEEFQVPYNKLQVIFKSDFSNEERFTGFAAYVATDINECTDFVD  
 VPCSHFCNNFIGGYFCSCPPEYFLHDDMKNCGVNCSGDVFTALIGEIASPNYPKYPENSRCYEQIRLEK  
 GFQVWTLRREDFDVEAADSAGNCLDSL VFVAGDRQFGPYCGHGFPGPLNIETKSNALDIIFQD LTGQK  
 KGWKLRYHGDPMPCKEDTPNSVWEPAKAKYVFRDVVQITCLDGFVEVGRV GATSFYSTCQSNGKWSN  
 S  
 KLKCCQPVDCGIPES IENGKVEDPESTLFGSVIRYTCEEPYYMENG GGGGEYHCAGNGSWVNEVLGPELPK  
 CVPVCGVPREPFEEKQRIIGGSDADIKNFPWQVFFDNPWAGGALINEYWVLTAAHVVEGNREPTMYVGST  
 SVQTSRLAKSKMLTPEHVFIHPGWKLLVPEGRTNFDNDIALVRLKDPVKMGPTVSPICLPGTSSDY NLM  
 DGDGLISGWGRTEKRDRAVRLKAARLPVAPLRKCKEVKVEKPTADAEAYVFTPNMICAGGEKGMDSCKG  
 DSGGAFAVQDPNDKTKFYAAGL VSWGWPQCGTYGLYTRVKNYVDWIMKTMQENSTPRED

**TRTRPLEQKLISEEDLAANDILDYKDDDDKV**

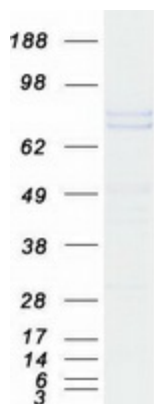
Tag:	C-Myc/DDK
Predicted MW:	74.8 kDa
Concentration:	>0.05 µg/µL as determined by microplate BCA method
Purity:	> 80% as determined by SDS-PAGE and Coomassie blue staining
Buffer:	25 mM Tris-HCl, 100 mM glycine, pH 7.3, 10% glycerol
Preparation:	Recombinant protein was captured through anti-DDK affinity column followed by conventional chromatography steps.
Note:	For testing in cell culture applications, please filter before use. Note that you may experience some loss of protein during the filtration process.



[View online »](#)

<b>Storage:</b>	Store at -80°C.
<b>Stability:</b>	Stable for 12 months from the date of receipt of the product under proper storage and handling conditions. Avoid repeated freeze-thaw cycles.
<b>RefSeq:</b>	<a href="#">NP_001725</a>
<b>Locus ID:</b>	716
<b>UniProt ID:</b>	<a href="#">P09871</a>
<b>RefSeq Size:</b>	2714
<b>Cytogenetics:</b>	12p13.31
<b>RefSeq ORF:</b>	2064
<b>Synonyms:</b>	EDSPD2
<b>Summary:</b>	This gene encodes a serine protease, which is a major constituent of the human complement subcomponent C1. C1s associates with two other complement components C1r and C1q in order to yield the first component of the serum complement system. Defects in this gene are the cause of selective C1s deficiency. [provided by RefSeq, Mar 2009]
<b>Protein Families:</b>	Druggable Genome, Protease
<b>Protein Pathways:</b>	Complement and coagulation cascades, Systemic lupus erythematosus

### Product images:



Coomassie blue staining of purified C1S protein (Cat# TP318963). The protein was produced from HEK293T cells transfected with C1S cDNA clone (Cat# [RC218963]) using MegaTran 2.0 (Cat# [TT210002]).