

Product datasheet for **TP318949L**

DOC2B (NM_003585) Human Recombinant Protein

Product data:

Product Type:	Recombinant Proteins
Description:	Recombinant protein of human double C2-like domains, beta (DOC2B), 1 mg
Species:	Human
Expression Host:	HEK293T
Expression cDNA Clone or AA Sequence:	>RC218949 representing NM_003585 Red =Cloning site Green =Tags(s)

MTLRRRGEKATISIQEHMAIDVCPGPIRPIKQISDYFPRFPRGLPPDAGPRAAAPPDAPARPAVAGAGRR
SPSDGAREDDVDQLFGAYGSSPGSPGSPARPPAKPPEDEPDADGYESDDCTALGTLDFFSLLYDQEN
NALHCTITKAKGLKPMHDHNLADPYVKLHLLPGASKANKLRKTLRNTLNPTWNETLTYYGITDEDMIRK
TLRISVCDEDKFRHNEFIGETRVPLKCLKPNHTKTFISICLEKQLPVDKTEDKSLEERGRILISLKYSSQK
QGLLVGIVRCAHLAAMDANGYSDPYVKTYLRPDVDKSKKHKTAVKKKTLNPEFNEEFCYEIKHGD LAKKS
LEVTVWDYDIGKSNDFIGGVVLGIHAKGERLKHWFDC LKNKDKRIERWHTLTSELP GAVLSD

TRTRPLEQKLISEEDLAANDILDYKDDDDKV

Tag:	C-Myc/DDK
Predicted MW:	45.8 kDa
Concentration:	>0.05 µg/µL as determined by microplate BCA method
Purity:	> 80% as determined by SDS-PAGE and Coomassie blue staining
Buffer:	25 mM Tris-HCl, 100 mM glycine, pH 7.3, 10% glycerol
Preparation:	Recombinant protein was captured through anti-DDK affinity column followed by conventional chromatography steps.
Note:	For testing in cell culture applications, please filter before use. Note that you may experience some loss of protein during the filtration process.
Storage:	Store at -80°C.
Stability:	Stable for 12 months from the date of receipt of the product under proper storage and handling conditions. Avoid repeated freeze-thaw cycles.
RefSeq:	<u>NP_003576</u>
Locus ID:	8447



[View online »](#)

UniProt ID: [Q14184](#)

RefSeq Size: 2030

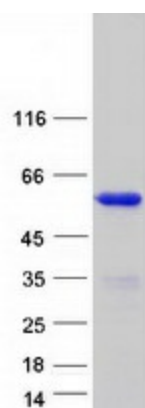
Cytogenetics: 17p13.3

RefSeq ORF: 1236

Synonyms: DOC2BL

Summary: There are at least two protein isoforms of the Double C2 protein, namely alpha (DOC2A) and beta (DOC2B), which contain two C2-like domains. DOC2A and DOC2B are encoded by different genes; these genes are at times confused with the unrelated DAB2 gene which was initially named DOC-2. DOC2B is expressed ubiquitously and is suggested to be involved in Ca(2+)-dependent intracellular vesicle trafficking in various types of cells. [provided by RefSeq, Jul 2008]

Product images:



Coomassie blue staining of purified DOC2B protein (Cat# [TP318949]). The protein was produced from HEK293T cells transfected with DOC2B cDNA clone (Cat# [RC218949]) using MegaTran 2.0 (Cat# [TT210002]).