

## Product datasheet for **TP318936L**

### ITGA8 (NM\_003638) Human Recombinant Protein

#### Product data:

Product Type:	Recombinant Proteins
Description:	Recombinant protein of human integrin, alpha 8 (ITGA8), 1 mg
Species:	Human
Expression Host:	HEK293T
Expression cDNA Clone or AA Sequence:	>RC218936 representing NM_003638 <b>Red</b> =Cloning site <b>Green</b> =Tags(s)

MSPGASRGPRGSQAPLIAPLCCAAAALGMLLWSPACQAFNLDVEKLTVYSGPKGSYFGYAVDFHIDART  
ASVLVGAPKANTSQPDIVEGGAVYYCPWPAEGSAQCRQIPFDTTNNRKIRVNGTKEPIEFKSNQWFGATV  
KAHKGKVVACAPLYHWRTLKPTPEKDPVGTCTYVAIQNFSAYAEFSPCRNSNADPEGQGYCQAGFSLDFYK  
NGDLIVGGPGSFYWQGVITASVADIANYSFKDILRLKAGEKQTEVAPASYDDSYLGYVAAGEFTGDS  
QQELVAGIPRGAQNFYVSIINSTDMTFIQNFTGEQMASYFGYTVWSDVNSDGLDDVLVGAFLMERE  
ESNPREVGQIYLYLQVSSLLFRDPQILTGTETFRFGSAMAHLGDLNQGYNDAIGVFPFAGKDQRGKVL  
IYNGNKDGLNTPKPSQVLQGVWASHAVPSGFGFTLRGDSIDKNDYDPLIVGAFGTGKVAVYRARPVVTVD  
AQLLLHPMIINLENKTCQVPDSMTSACFSLRVCASVTGQSIANTIVLMAEVQLDSLKQKGAIKRTFLD  
NHQAHRVFPLVIKRQKSHQCQDFIVYLRDETEFRDKLSPINISLNYSLDESTFKEGLEVKPILNYYRENI  
VSEQAHLVDCGEDNLCVPLKLSARPDKHQVIIGDENHMLIINARNEGEGAYEAELFVMIPEEADYVG  
IERNNGFRPLSCEYKMENVTRMVCDLGNPMVSGTNYSLGLRFAVPRLEKTNMSINFDLQIRSSNKDNP  
DSNFVSLQINITAVAQVEIRGVSHPPQIVLPIHNWEPEEPHKEEEVGPLVEHIYELHNIGPSTISDTIL  
EVGWPFARDEFLLYIFHIQTLGPLQCQPNPNINPQDIKPAASPEDTPELSAFLRNSTIPHLVRKRDVHV  
VEFHRQSPAKILNCTNIECLQISCAVGRLEGGESAVLKVRSRLWAHTFLQRKNDPYALASLVSFVKKMP  
YTDQPAKLPEGSIAIKTSVIWATPNVSFSIPLWVILAILLGLLVAILTLALWKCFFDRARPPQEDMT  
DREQLTNDKTPEA

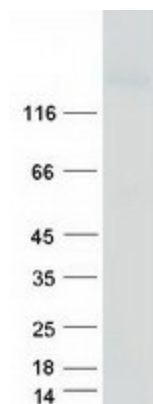
**TRTRPLEQKLISEEDLAANDILDYKDDDDKV**

Tag:	C-Myc/DDK
Predicted MW:	117.3 kDa
Concentration:	>0.05 µg/µL as determined by microplate BCA method
Purity:	> 80% as determined by SDS-PAGE and Coomassie blue staining
Buffer:	25 mM Tris-HCl, 100 mM glycine, pH 7.3, 10% glycerol



[View online »](#)

<b>Preparation:</b>	Recombinant protein was captured through anti-DDK affinity column followed by conventional chromatography steps.
<b>Note:</b>	For testing in cell culture applications, please filter before use. Note that you may experience some loss of protein during the filtration process.
<b>Storage:</b>	Store at -80°C.
<b>Stability:</b>	Stable for 12 months from the date of receipt of the product under proper storage and handling conditions. Avoid repeated freeze-thaw cycles.
<b>RefSeq:</b>	<a href="#">NP_003629</a>
<b>Locus ID:</b>	8516
<b>UniProt ID:</b>	<a href="#">P53708</a> , <a href="#">B4DN28</a>
<b>RefSeq Size:</b>	3261
<b>Cytogenetics:</b>	10p13
<b>RefSeq ORF:</b>	3189
<b>Summary:</b>	<p>Integrins are heterodimeric transmembrane receptor proteins that mediate numerous cellular processes including cell adhesion, cytoskeletal rearrangement, and activation of cell signaling pathways. Integrins are composed of alpha and beta subunits. This gene encodes the alpha 8 subunit of the heterodimeric integrin alpha8beta1 protein. The encoded protein is a single-pass type 1 membrane protein that contains multiple FG-GAP repeats. This repeat is predicted to fold into a beta propeller structure. This gene regulates the recruitment of mesenchymal cells into epithelial structures, mediates cell-cell interactions, and regulates neurite outgrowth of sensory and motor neurons. The integrin alpha8beta1 protein thus plays an important role in wound-healing and organogenesis. Mutations in this gene have been associated with renal hypodysplasia/aplasia-1 (RHDA1) and with several animal models of chronic kidney disease. Alternate splicing results in multiple transcript variants encoding distinct isoforms. [provided by RefSeq, Apr 2014]</p>
<b>Protein Families:</b>	Druggable Genome, Transmembrane
<b>Protein Pathways:</b>	Arrhythmogenic right ventricular cardiomyopathy (ARVC), Cell adhesion molecules (CAMs), Dilated cardiomyopathy, ECM-receptor interaction, Focal adhesion, Hypertrophic cardiomyopathy (HCM), Regulation of actin cytoskeleton

**Product images:**

Coomassie blue staining of purified ITGA8 protein (Cat# [TP318936]). The protein was produced from HEK293T cells transfected with ITGA8 cDNA clone (Cat# [RC218936]) using MegaTran 2.0 (Cat# [TT210002]).