

Product datasheet for TP318936

ITGA8 (NM_003638) Human Recombinant Protein

Product data:

Product Type:	Recombinant Proteins
Description:	Recombinant protein of human integrin, alpha 8 (ITGA8), 20 µg
Species:	Human
Expression Host:	HEK293T
Expression cDNA Clone or AA Sequence:	>RC218936 representing NM_003638 Red=Cloning site Green=Tags(s)

MSPGASRGPRGSQAPLIAPLCCAAAALGMLLWSPACQAFNLDVEKLTVYSGPKGSYFGYAVDFHIPDART
ASVLVGAPKANTSQPDIVEGGAVYYCPWPAEGSAQCRQIPFDTTNNRKIRVNGTKEPIEFKSNQWFGATV
KAHKGKVVACAPLYHWRTLKPTPEKDPVGTCTYVAIQNFSAYAEFSPCRNSNADPEGQGYCQAGFSLDFYK
NGDLIVGGPGSFYWQGVITASVADIANYSEFKDILRKLAGEKQTEVAPASYDDSYLGYVAAGEFTGDS
QQELVAGIPRGAQNFYVSIINSTDMTFIQNFTGEQMASYFGYTVWSDVNSDGLDDVLVGAFLMERE
ESNPREVGQIYLYLQVSSLLFRDPQILTGTETFRFGSAMAHLGDLNQDGYNDIAIGVFPFAGKDQRGKVL
IYNGNKDGLNTPKPSQVLQGVWASHAVPSGFGFTLRGSDSIDKNDYDPLIVGAFGTGKVAVYRARPVVTVD
AQLLLHPMIINLENKTCQVPDSMTSACFSLRVCASVTGQSIANTIVLMAEVQLDSLKQKGAIKRTFLD
NHQAHRVFPLVIKRQKSHQCQDFIVYLRDETEFRDKLSPINISLNYSLDESTFKEGLEVKPILNYYRENI
VSEQAHLVDCGEDNLCVPLDLKLSARPDKHQVIIGDENHMLIINARNEGEGAYEAELFVMIPEEADYVG
IERNNGFRPLSCEYKMENVTRMVCDLGNPMVSGTNYSLGLRFAVPRLEKTNMSINFDLQIRSSNKDNP
DSNFVSLQINITAVAQVEIRGVSHPPQIVLPIHNWEPEEPPHKEEEVGPLVEHIYELHNIGPSTISDTIL
EVGWPFARDEFLLYIFHIQTLGPLQCQPNPNINPQDIKPAASPEDTPELSAFLRNSTIPHLVRKRDVHV
VEFHRQSPAKILNCTNIECLQISCAVGRLEGGESAVLKVRSRLWAHTFLQRKNDPYALASLVSFVKKMP
YTDQPAKLPEGSIAIKTSVIWATPNVSFSIPLWVILAILLGLLVAILTLALWKCFFDRARPPQEDMT
DREQLTNDKTPEA

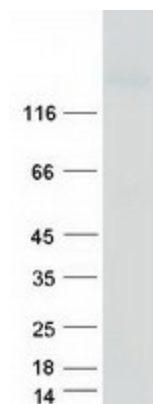
TRTRPLEQKLISEEDLAANDILDYKDDDDKV

Tag:	C-Myc/DDK
Predicted MW:	117.3 kDa
Concentration:	>0.05 µg/µL as determined by microplate BCA method
Purity:	> 80% as determined by SDS-PAGE and Coomassie blue staining
Buffer:	25 mM Tris-HCl, 100 mM glycine, pH 7.3, 10% glycerol



[View online »](#)

Preparation:	Recombinant protein was captured through anti-DDK affinity column followed by conventional chromatography steps.
Note:	For testing in cell culture applications, please filter before use. Note that you may experience some loss of protein during the filtration process.
Storage:	Store at -80°C.
Stability:	Stable for 12 months from the date of receipt of the product under proper storage and handling conditions. Avoid repeated freeze-thaw cycles.
RefSeq:	NP_003629
Locus ID:	8516
UniProt ID:	P53708 , B4DN28
RefSeq Size:	3261
Cytogenetics:	10p13
RefSeq ORF:	3189
Summary:	<p>Integrins are heterodimeric transmembrane receptor proteins that mediate numerous cellular processes including cell adhesion, cytoskeletal rearrangement, and activation of cell signaling pathways. Integrins are composed of alpha and beta subunits. This gene encodes the alpha 8 subunit of the heterodimeric integrin alpha8beta1 protein. The encoded protein is a single-pass type 1 membrane protein that contains multiple FG-GAP repeats. This repeat is predicted to fold into a beta propeller structure. This gene regulates the recruitment of mesenchymal cells into epithelial structures, mediates cell-cell interactions, and regulates neurite outgrowth of sensory and motor neurons. The integrin alpha8beta1 protein thus plays an important role in wound-healing and organogenesis. Mutations in this gene have been associated with renal hypodysplasia/aplasia-1 (RHDA1) and with several animal models of chronic kidney disease. Alternate splicing results in multiple transcript variants encoding distinct isoforms. [provided by RefSeq, Apr 2014]</p>
Protein Families:	Druggable Genome, Transmembrane
Protein Pathways:	Arrhythmogenic right ventricular cardiomyopathy (ARVC), Cell adhesion molecules (CAMs), Dilated cardiomyopathy, ECM-receptor interaction, Focal adhesion, Hypertrophic cardiomyopathy (HCM), Regulation of actin cytoskeleton

Product images:

Coomassie blue staining of purified ITGA8 protein (Cat# TP318936). The protein was produced from HEK293T cells transfected with ITGA8 cDNA clone (Cat# [RC218936]) using MegaTran 2.0 (Cat# [TT210002]).