

## Product datasheet for **TP318931**

### CaMKK (CAMKK1) (NM\_172206) Human Recombinant Protein

#### Product data:

Product Type:	Recombinant Proteins
Description:	Recombinant protein of human calcium/calmodulin-dependent protein kinase kinase 1, alpha (CAMKK1), transcript variant 2, 20 µg
Species:	Human
Expression Host:	HEK293T
Expression cDNA Clone or AA Sequence:	>RC218931 protein sequence <b>Red</b> =Cloning site <b>Green</b> =Tags(s)

MEGGPAVCCQDPRAELVERVAAIDVTHLEEDGGPEPTRNGVDPPPRARAASVIPGSTRLLPARPSLSA  
RKLSLQERPAGSYLEAQAGPYATGPASHISPRAWRRPTIESHHVAISDAEDCVQLNQYKLGSEIGKGAYG  
VRLAYNESEDRHYAMKVLSKKKLLKQYGFPRRPPRGSQAAQGGPAKQLPLERVYQEIAILKKLDHVN  
VVKLIEVLDDPAEDNLYLVFDLLRKGPMVEVPCDKPFSEEQARLYLRDVILGLEYLHCQKIVHRDIKPSN  
LLLGDGHHVKIADFGVSNQFEGNDAQLSSTAGTPAFMAPEAISDSGQSFSGKALDWATGVTLYCFVYGK  
CPFIDDFILALHRKIKNEPVVFPPEPEISEELKDILKMLDKNPETRIGVDPDIKHPWVTKNGEELPSE  
EEHCSVVEVTEEEVKNSVRLIPSWTTVILVKSMLRKRSGFNGPFEPQARREERSMSAPGNLLVKEGFEGGG  
KSPELPGVQEDEAAS

**TRTRPLEQKLISEEDLAANDILDYKDDDDKV**

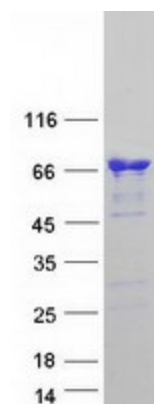
Tag:	C-Myc/DDK
Predicted MW:	55.6 kDa
Concentration:	>0.05 µg/µL as determined by microplate BCA method
Purity:	> 80% as determined by SDS-PAGE and Coomassie blue staining
Buffer:	25 mM Tris-HCl, 100 mM glycine, pH 7.3, 10% glycerol
Preparation:	Recombinant protein was captured through anti-DDK affinity column followed by conventional chromatography steps.
Note:	For testing in cell culture applications, please filter before use. Note that you may experience some loss of protein during the filtration process.
Storage:	Store at -80°C.



[View online »](#)

Stability:	Stable for 12 months from the date of receipt of the product under proper storage and handling conditions. Avoid repeated freeze-thaw cycles.
RefSeq:	<a href="#">NP_757343</a>
Locus ID:	84254
UniProt ID:	<a href="#">Q8N5S9</a> , <a href="#">J3KPJ3</a>
RefSeq Size:	3529
Cytogenetics:	17p13.2
RefSeq ORF:	1515
Synonyms:	CAMKKA
Summary:	The product of this gene belongs to the Serine/Threonine protein kinase family, and to the Ca(2+)/calmodulin-dependent protein kinase subfamily. This protein plays a role in the calcium/calmodulin-dependent (CaM) kinase cascade. Three transcript variants encoding two distinct isoforms have been identified for this gene. [provided by RefSeq, Jul 2008]
Protein Families:	Druggable Genome, Protein Kinase
Protein Pathways:	Adipocytokine signaling pathway

### Product images:



Coomassie blue staining of purified CAMKK1 protein (Cat# TP318931). The protein was produced from HEK293T cells transfected with CAMKK1 cDNA clone (Cat# [RC218931]) using MegaTran 2.0 (Cat# [TT210002]).