

Product datasheet for **TP318930L**

C16orf89 (NM_152459) Human Recombinant Protein

Product data:

Product Type:	Recombinant Proteins
Description:	Recombinant protein of human chromosome 16 open reading frame 89 (C16orf89), transcript variant 1, 1 mg
Species:	Human
Expression Host:	HEK293T
Expression cDNA Clone or AA Sequence:	>RC218930 representing NM_152459 Red =Cloning site Green =Tags(s)

MASLGLLLLLLLLTALPPLWSSSLPGLDTAESKATIADLILSALERATVFLEQRLPEINLDGMVGVVLEE
QLKSVREKWAQEPLLQPLSLRVGMLGEKLEAAIQRSLHYLKLSDPKYLREFQLTLQPGFWKLPHAWIHTD
ASLVYPTFGPQDSFSEERSDVCLVQLLGTGTDSEPCGLSDLCRSLMTKPGCSGYCLSHQLLFFLWARMR
GCTQGPLQQSQDYINLFCANMMDLNRRAEAIGYAYPTRDIFMENIMFCGMGGFSDFYKLRWLEAILSQWQK
QQEGCFGEPDAEDEELSKAIQYQQHFSRRVKRREKQFPDSRSVAQAGVQRNLSLQPLPPGFKQFSLI
LPSSWDYRSVPPYLANFYIFLVETGFHHVAHAGLELLISRDPPSTSGSQSVGL

TRTRPLEQKLISEEDLAANDILDYKDDDDKV

Tag:	C-Myc/DDK
Predicted MW:	49.2 kDa
Concentration:	>0.05 µg/µL as determined by microplate BCA method
Purity:	> 80% as determined by SDS-PAGE and Coomassie blue staining
Buffer:	25 mM Tris-HCl, 100 mM glycine, pH 7.3, 10% glycerol
Preparation:	Recombinant protein was captured through anti-DDK affinity column followed by conventional chromatography steps.
Note:	For testing in cell culture applications, please filter before use. Note that you may experience some loss of protein during the filtration process.
Storage:	Store at -80°C.
Stability:	Stable for 12 months from the date of receipt of the product under proper storage and handling conditions. Avoid repeated freeze-thaw cycles.
RefSeq:	<u>NP_689672</u>



[View online »](#)

Locus ID: 146556

UniProt ID: [Q6UX73](#)

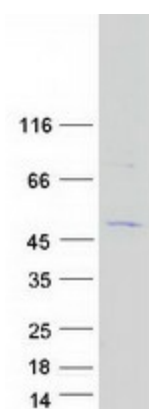
RefSeq Size: 1898

Cytogenetics: 16p13.3

RefSeq ORF: 1206

Summary: This gene is expressed predominantly in the thyroid. Based on expression patterns similar to thyroid transcription factors and proteins, this gene may function in the development and function of the thyroid. Multiple transcript variants encoding different isoforms have been found for this gene. [provided by RefSeq, Oct 2011]

Product images:



Coomassie blue staining of purified C16orf89 protein (Cat# [TP318930]). The protein was produced from HEK293T cells transfected with C16orf89 cDNA clone (Cat# [RC218930]) using MegaTran 2.0 (Cat# [TT210002]).