

## Product datasheet for **TP318925M**

### **MAGI3 (NM\_152900) Human Recombinant Protein**

#### Product data:

Product Type:	Recombinant Proteins
Description:	Recombinant protein of human membrane associated guanylate kinase, WW and PDZ domain containing 3 (MAGI3), transcript variant 2, 100 µg
Species:	Human
Expression Host:	HEK293T
Expression cDNA Clone or AA Sequence:	>RC218925 protein sequence <b>Red</b> =Cloning site <b>Green</b> =Tags(s)

MSKTLKKKKHWLSKVQECASVWAGPPGDFGAEIRGGAERGFPPYLGRLLREEPGGGTCCVSGKAPSPGDV  
LLEVNGTPVSGLTNRDTLAVIRHFREPRLKTVKPGKVINKDLRHYSLQFQKGSIDHKLQQVIRDNLYL  
RTIPCTTRAPRDGEVPGVDYNFISVEQFKALEESGALLESPTYDGNFYGTPKPPAEPSPFPDPVDQVLF  
DNEFDAESQRKRTTSVSKMERMDSSLPEEEEEDEKEAINGSGNAENRERHSESSDWMKTVPSYNQTNSSM  
DFRNYMMRDETLEPLPKNWEMAYTDTGMIYFIDHNTKTTTWLDPRLCCKAKAPEDCEDGELPYGWKIED  
PQYGTYYVDHLNQKTQFENPVVEAKRKKQLGQVEIGSSKPDMEKSHFTRDPSQLKGVLRASLKKSTMGF  
GFTIIGGDRPDEFLQVKNVLKDGPAAQDGKIAPGDVIVDINGNCVLGHTHADVVQMFQLVPVNQYVNLTL  
CRGYPLPDDSEDPVVDIVAATPVINGQSLTKGETCMNPQDFKPGAMVLEQNGKSGHTLTGDGLNGPSDAS  
EQRVSMASGSSQPELVTIPLIKGPKGFIFAIDSPTGQVKMILDSQWCQGLQKGDIIKEIYHQNQNL  
THLQVVEVLKQFPVGADVPLLLILRGGPPSPTKTAKMKTDKKENAGSLEAINEPIQPMPFPSPSIIRSGSP  
KLDPSEVYLKSKTLYEDKPPNTKDLDFLRLKQESGFGFRVLGGDGPDQSIYIGAIPLGAAEKDGRRLAA  
DELMCIDGIPVKGKSHKQVLDLMTTAARNGHVLLTVRRKIFYGEKQPEDDSSQAFISTQNGSPRLNRAEV  
PARPAPQEPYDVLQRKENEGFGFVILTSKNKPPPGVIPHKIGRVIEGSPADRCGKLVGDHISAVNGQS  
IVELSHDNIVQLIKDAGVTVTLTVIAEEEEHHGPPSGTNSARQSPALQHRPMGQSQANHIPGDRSALEGEI  
GKDVSTSYRHSWSDHKHLAQPDTAVISVWGSRHNQNLGCPVELERGRGFGFSLRGGKEYNMGLFILRL  
AEDGPAIKDGRIHVGDQIVEINGEPTQGITHTRAIELIQAGGNKVLVLLLRPGTGLIPDHGLAPSGLCSYV  
KPEQH

**TRTRPLEQKLISEEDLAANDILDYKDDDDKV**

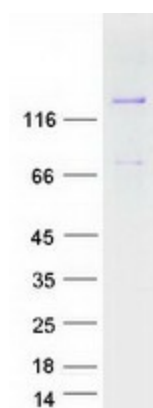
Tag:	C-Myc/DDK
Predicted MW:	123.2 kDa
Concentration:	>0.05 µg/µL as determined by microplate BCA method
Purity:	> 80% as determined by SDS-PAGE and Coomassie blue staining



[View online »](#)

<b>Buffer:</b>	25 mM Tris-HCl, 100 mM glycine, pH 7.3, 10% glycerol
<b>Preparation:</b>	Recombinant protein was captured through anti-DDK affinity column followed by conventional chromatography steps.
<b>Note:</b>	For testing in cell culture applications, please filter before use. Note that you may experience some loss of protein during the filtration process.
<b>Storage:</b>	Store at -80°C.
<b>Stability:</b>	Stable for 12 months from the date of receipt of the product under proper storage and handling conditions. Avoid repeated freeze-thaw cycles.
<b>RefSeq:</b>	<a href="#">NP_690864</a>
<b>Locus ID:</b>	260425
<b>UniProt ID:</b>	<a href="#">Q5TCQ9</a>
<b>RefSeq Size:</b>	7221
<b>Cytogenetics:</b>	1p13.2
<b>RefSeq ORF:</b>	3375
<b>Synonyms:</b>	dj730K3.2; MAGI-3
<b>Summary:</b>	Acts as a scaffolding protein at cell-cell junctions, thereby regulating various cellular and signaling processes. Cooperates with PTEN to modulate the kinase activity of AKT1. Its interaction with PTPRB and tyrosine phosphorylated proteins suggests that it may link receptor tyrosine phosphatase with its substrates at the plasma membrane. In polarized epithelial cells, involved in efficient trafficking of TGFA to the cell surface. Regulates the ability of LPAR2 to activate ERK and RhoA pathways. Regulates the JNK signaling cascade via its interaction with FZD4 and VANGL2.[UniProtKB/Swiss-Prot Function]
<b>Protein Families:</b>	Druggable Genome
<b>Protein Pathways:</b>	Tight junction

### Product images:



Coomassie blue staining of purified MAGI3 protein (Cat# [TP318925]). The protein was produced from HEK293T cells transfected with MAGI3 cDNA clone (Cat# [RC218925]) using MegaTran 2.0 (Cat# [TT210002]).