

Product datasheet for TP318925L

MAGI3 (NM_152900) Human Recombinant Protein

Product data:

Product Type:	Recombinant Proteins
Description:	Recombinant protein of human membrane associated guanylate kinase, WW and PDZ domain containing 3 (MAGI3), transcript variant 2, 1 mg
Species:	Human
Expression Host:	HEK293T
Expression cDNA Clone or AA Sequence:	>RC218925 protein sequence Red=Cloning site Green=Tags(s)

MSKTLKKKKHWLSKVQECASVWAGPPGDFGAEIRGGAERGFPPYLGRLLREPPGGGTCCVSGKAPSPGDV
LLEVNGTPVSGLTNRDTLAVIRHFREPRLKTVKPGKVINKDLRHYSLQFQKGSIDHKLQQVIRDNLYL
RTIPCTTRAPRDGEVPGVDYDNFISVEQFKALEESGALLESPTYDGNFYGTPKPPAEPSPFPDPVDQVLF
DNEFDAESQRKRRTTSVSKMERMDSSLPEEEEEDEKEAINGSGNAENRERHSESSDWMKTVPSYNQTNSSM
DFRNYMMRDETLEPLPKNWEMAYTDTGMIYFIDHNTKTTTWLDPRLCCKAKAPEDCEDGELPYGWKIED
PQYGTYYVDHLNQKTQFENPVVEAKRKKQLGQVEIGSSKPDMEKSHFTRDPSQLKGVLRASLKKSTMGF
GFTIIGGDRPDEFLQVKNVLKDGPAAQDGKIAPGDVIVDINGNCVLGHTHADVVQMFQLVPVNQYVNLTL
CRGYPLPDDSEDPVDIVAATPVINGQSLTKGETCMNPQDFKPGAMVLEQNGKSGHTLTGDGLNGPSDAS
EQRVSMASGSSQPELVTIPLIKGPKGFGFAIADSPTGQKVKMILDSQWCQGLQKGDIIKEIYHQNVQNL
THLQVVEVLKQFPVGADVPLLLIRGGPPSPTKTAKMKTDKKENAGSLEAINEPIQPMPFPSPSIIRSGSP
KLDPSEVYLKSKTLYEDKPPNTKDLDFLRLKQESGFGFRVLGGDGPDQSIYIGAIPLGAAEKDGRLRAA
DELMCIDGIPVKGKSHKQVLDLMTTAARNGHVLLTVRRKIFYGEKQPEDDSSQAFISTQNGSPRLNRAEV
PARPAPQEPYDVLQRKENEGFGFVILTSKNKPPPGVIPHKIGRVIEGSPADRCGKLVGDHISAVNGQS
IVELSHDNIVQLIKDAGVTVTLTVIAEEHHGPPSGTNSARQSPALQHRPMGQSQANHIPGDRSALEGEI
GKDVSTSYRHSWSDHKHLAQPDTAIVSVGSRHNQNLGCPVELERGRGFGFSLRGGKEYNMGLFILRL
AEDGPAIKDGRIHVGDQIVEINGEPTQGITHTRAIELIQAGGNKVLALLLRPGTGLIPDHGLAPSGLCSYV
KPEQH

TRTRPLEQKLISEEDLAANDILDYKDDDDKV

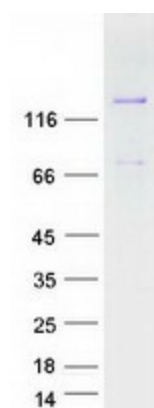
Tag:	C-Myc/DDK
Predicted MW:	123.2 kDa
Concentration:	>0.05 µg/µL as determined by microplate BCA method
Purity:	> 80% as determined by SDS-PAGE and Coomassie blue staining



[View online »](#)

Buffer:	25 mM Tris-HCl, 100 mM glycine, pH 7.3, 10% glycerol
Preparation:	Recombinant protein was captured through anti-DDK affinity column followed by conventional chromatography steps.
Note:	For testing in cell culture applications, please filter before use. Note that you may experience some loss of protein during the filtration process.
Storage:	Store at -80°C.
Stability:	Stable for 12 months from the date of receipt of the product under proper storage and handling conditions. Avoid repeated freeze-thaw cycles.
RefSeq:	NP_690864
Locus ID:	260425
UniProt ID:	Q5TCQ9
RefSeq Size:	7221
Cytogenetics:	1p13.2
RefSeq ORF:	3375
Synonyms:	dj730K3.2; MAGI-3
Summary:	Acts as a scaffolding protein at cell-cell junctions, thereby regulating various cellular and signaling processes. Cooperates with PTEN to modulate the kinase activity of AKT1. Its interaction with PTPRB and tyrosine phosphorylated proteins suggests that it may link receptor tyrosine phosphatase with its substrates at the plasma membrane. In polarized epithelial cells, involved in efficient trafficking of TGFA to the cell surface. Regulates the ability of LPAR2 to activate ERK and RhoA pathways. Regulates the JNK signaling cascade via its interaction with FZD4 and VANGL2.[UniProtKB/Swiss-Prot Function]
Protein Families:	Druggable Genome
Protein Pathways:	Tight junction

Product images:



Coomassie blue staining of purified MAGI3 protein (Cat# [TP318925]). The protein was produced from HEK293T cells transfected with MAGI3 cDNA clone (Cat# [RC218925]) using MegaTran 2.0 (Cat# [TT210002]).