

## Product datasheet for TP318925

### MAGI3 (NM\_152900) Human Recombinant Protein

#### Product data:

Product Type:	Recombinant Proteins
Description:	Recombinant protein of human membrane associated guanylate kinase, WW and PDZ domain containing 3 (MAGI3), transcript variant 2, 20 µg
Species:	Human
Expression Host:	HEK293T
Expression cDNA Clone or AA Sequence:	>RC218925 protein sequence <b>Red</b> =Cloning site <b>Green</b> =Tags(s)

MSKTLKKKKHWLSKVQECASVWAGPPGDFGAEIRGGAERGEFPYLGRRLREEPGGGTCCVWSGKAPSPGDV  
LLEVNGTPVSGLTNRDTLAVIRHFREPIRLKTVKPGKVINKDLRHYSLSLQFQKGSIDHKLQQVIRDNLYL  
RTIPTCTRPRDGEVPGVDYNFISVEQFKALEESGALLESPTYDGNFYGTGPKPPAEPSPFQDPVDQVLF  
DNEFDAESQRKRRTSVSKMERMDSLPEEEEDKEAINGSGNAENRERHSESSDWMKTVPYNSYNQNTSS  
M  
DFRNYMMRDETLEPLPKNWEMAYTDTGMIYFIDHNTKTTTWLDPRLCKKAKAPEDCEDGELPYGWEKIE  
D  
PQYGYTYVDHLNQKTQFENPVVEAKRKKQLGQVEIGSSKPDMEKSHFTRDPSQLKGVLRASLKKSTMGF  
GFTIIGGDRPDEFQVKNVLDGPAADGKIAPGDVIVDINGNVLGHTHADVVQMFQLVQVNVNLT  
L  
CRGYPLPDDSEDPWDIVAATPVINGQSLTKGETCMNPQDFKPGAMVLEQNGKSGHTLTGDGLNGPSDA  
S  
EQRVSMASGSSQPELVTIPLIKGPKGFGFAIADSPTGQKVKMILDSQWCQGLQKGDIIKEIYHQNQNL  
THLQVVEVLKQFPVGADVPLLILRGGPPSPTKTAKMKTDKKENAGSLEAINEPIQPMPFPSSIIRSGSP  
KLDPSEVYLKSKTLYEDKPPNTKDLDFVLRKQESGFGFRVLGGDQSIYIGAIPLGAAEKDGRRLAA  
DELMCIDGIPVKGKSHKQVLDLMTTAARNGHVLLTVRRKIFYGEKQPEDDSSQAFISTQNGSPRLNRAEV  
PARPAPQEPYDVVLQRKENEGFGFVILTSKNKPPPGVIPHKIGRVIEGSPADRCGKLVGDHISAVNGQS  
IVELSHDNIVQLIKDAGVTVTLTVIAEEHHGPPSGTNSARQSPALQHRPMGQSQANHIPGDRSALEGEI  
GKDVSTSYRHSWSDHKHLAQPDTAVISVVGSRHNQNLGCYPVELERGPGRGFGSLRGGKEYNMGLFILRL  
AEDGPAIKDGRIHVGDQIVEINGEPTQGITHTRAIELIQAGGNKVVLLLRPGTGLIPDHGLAPSGLCSYV  
KPEQH

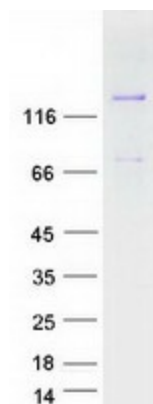
**TRTRPLEQKLISEEDLAANDILDYKDDDDKV**

Tag: C-Myc/DDK



[View online >](#)

<b>Predicted MW:</b>	123.2 kDa
<b>Concentration:</b>	>0.05 µg/µL as determined by microplate BCA method
<b>Purity:</b>	> 80% as determined by SDS-PAGE and Coomassie blue staining
<b>Buffer:</b>	25 mM Tris-HCl, 100 mM glycine, pH 7.3, 10% glycerol
<b>Preparation:</b>	Recombinant protein was captured through anti-DDK affinity column followed by conventional chromatography steps.
<b>Note:</b>	For testing in cell culture applications, please filter before use. Note that you may experience some loss of protein during the filtration process.
<b>Storage:</b>	Store at -80°C.
<b>Stability:</b>	Stable for 12 months from the date of receipt of the product under proper storage and handling conditions. Avoid repeated freeze-thaw cycles.
<b>RefSeq:</b>	<a href="#">NP_690864</a>
<b>Locus ID:</b>	260425
<b>UniProt ID:</b>	<a href="#">Q5TCQ9</a>
<b>RefSeq Size:</b>	7221
<b>Cytogenetics:</b>	1p13.2
<b>RefSeq ORF:</b>	3375
<b>Synonyms:</b>	dj730K3.2; MAGI-3
<b>Summary:</b>	Acts as a scaffolding protein at cell-cell junctions, thereby regulating various cellular and signaling processes. Cooperates with PTEN to modulate the kinase activity of AKT1. Its interaction with PTPRB and tyrosine phosphorylated proteins suggests that it may link receptor tyrosine phosphatase with its substrates at the plasma membrane. In polarized epithelial cells, involved in efficient trafficking of TGFA to the cell surface. Regulates the ability of LPAR2 to activate ERK and RhoA pathways. Regulates the JNK signaling cascade via its interaction with FZD4 and VANGL2.[UniProtKB/Swiss-Prot Function]
<b>Protein Families:</b>	Druggable Genome
<b>Protein Pathways:</b>	Tight junction

**Product images:**

Coomassie blue staining of purified MAGI3 protein (Cat# TP318925). The protein was produced from HEK293T cells transfected with MAGI3 cDNA clone (Cat# [RC218925]) using MegaTran 2.0 (Cat# [TT210002]).