

Product datasheet for TP318912L

FAM3C (NM_001040020) Human Recombinant Protein

Product data:

Product Type: Recombinant Proteins

Description: Recombinant protein of human family with sequence similarity 3, member C (FAM3C), transcript variant 2, 1 mg

Species: Human

Expression Host: HEK293T

Expression cDNA Clone or AA Sequence: >RC218912 protein sequence
Red=Cloning site **Green**=Tags(s)

MRVAGAAKLWAVAVFLLTFYVISQVFEIKMDASLG NLFARSALDTAARSTKPPRYKCGISKACPEKHFA
FKMASGAANVVGPKICLEDNVLMSGVKNNVGRGINVALANGKTGEVLDTKYFDMWGGDVAPFIEFLKAIQ
DGTIVLMGTYDDGATKLNDEARRLIADLGSTSITNLGFRDNWVFCGGKGIKTKSPFEQHIKNNKDTNKYE
GWPEVEMEGCIPQKQD

TRTRPLEQKLISEEDLAANDILDYKDDDDKV

Tag: C-Myc/DDK

Predicted MW: 22.1 kDa

Concentration: >0.05 µg/µL as determined by microplate BCA method

Purity: > 80% as determined by SDS-PAGE and Coomassie blue staining

Buffer: 25 mM Tris-HCl, 100 mM glycine, pH 7.3, 10% glycerol

Preparation: Recombinant protein was captured through anti-DDK affinity column followed by conventional chromatography steps.

Note: For testing in cell culture applications, please filter before use. Note that you may experience some loss of protein during the filtration process.

Storage: Store at -80°C.

Stability: Stable for 12 months from the date of receipt of the product under proper storage and handling conditions. Avoid repeated freeze-thaw cycles.

RefSeq: [NP_001035109](#)

Locus ID: 10447



[View online »](#)

UniProt ID: [Q92520](#)

RefSeq Size: 2512

Cytogenetics: 7q31.31

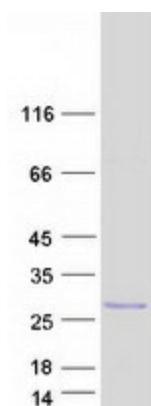
RefSeq ORF: 681

Synonyms: GS3786; ILEI

Summary: This gene is a member of the family with sequence similarity 3 (FAM3) family and encodes a secreted protein with a GG domain. A change in expression of this protein has been noted in pancreatic cancer-derived cells. [provided by RefSeq, Mar 2010]

Protein Families: Secreted Protein, Transmembrane

Product images:



Coomassie blue staining of purified FAM3C protein (Cat# [TP318912]). The protein was produced from HEK293T cells transfected with FAM3C cDNA clone (Cat# [RC218912]) using MegaTran 2.0 (Cat# [TT210002]).