

Product datasheet for **TP318909L**

PPM1L (NM_139245) Human Recombinant Protein

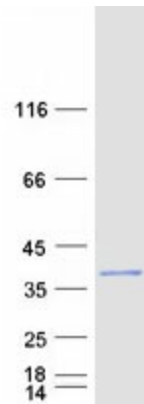
Product data:

Product Type:	Recombinant Proteins
Description:	Recombinant protein of human protein phosphatase 1 (formerly 2C)-like (PPM1L), 1 mg
Species:	Human
Expression Host:	HEK293T
Expression cDNA Clone or AA Sequence:	>RC218909 representing NM_139245 Red =Cloning site Green =Tags(s)
	<p>MIEDTMTLLSLLGRIMRYFLLRPETLFLLCISLALWSYFFHTDEVKTIVKSSRDAVKMVKGKVAEIMQND RLGGLDVLEAEFSKTWEFKNHNVAVYSIQGRRDHMEDRFEVLTDLANKTHPSIFGIFDGHGGETAEEYVK SRLPEALKQHLQDYEKDKENSVLSYQTILEQQILSIDREMLEKLTVSYDEAGTTCIALLSDKDLTVANV GDSRGVLCDDKGNAPLSHDHKPYQLKERKRIKRAGGFISFNQSWRVQGILAMSRSLGDYPLKNLNVVIP DPDILTFDLKLPPEFMILASDGLWDAFSNEEAVERFIKERLDEPHFGAKSIVLQSFYRGCPDNITVMVVK FRNSSKTEEQ</p> <p>TRTRPLEQKLISEEDLAANDILDYKDDDDKV</p>
Tag:	C-Myc/DDK
Predicted MW:	40.9 kDa
Concentration:	>0.05 µg/µL as determined by microplate BCA method
Purity:	> 80% as determined by SDS-PAGE and Coomassie blue staining
Buffer:	25 mM Tris-HCl, 100 mM glycine, pH 7.3, 10% glycerol
Preparation:	Recombinant protein was captured through anti-DDK affinity column followed by conventional chromatography steps.
Note:	For testing in cell culture applications, please filter before use. Note that you may experience some loss of protein during the filtration process.
Storage:	Store at -80°C.
Stability:	Stable for 12 months from the date of receipt of the product under proper storage and handling conditions. Avoid repeated freeze-thaw cycles.
RefSeq:	NP_640338
Locus ID:	151742



[View online »](#)

UniProt ID:	Q5SGD2
RefSeq Size:	3056
Cytogenetics:	3q25.33-q26.1
RefSeq ORF:	1080
Synonyms:	PP2C-epsilon; PP2CE; PPM1-LIKE
Summary:	The protein encoded by this gene is a magnesium or manganese-requiring phosphatase that is involved in several signaling pathways. The encoded protein downregulates apoptosis signal-regulating kinase 1, a protein that initiates a signaling cascade that leads to apoptosis when cells are subjected to cytotoxic stresses. This protein also is an endoplasmic reticulum transmembrane protein that helps regulate ceramide transport from the endoplasmic reticulum to the Golgi apparatus. Finally, this gene may be involved in adiposity since it is upregulated in adipose tissues. Several transcript variants encoding different isoforms have been found for this gene. [provided by RefSeq, Dec 2015]
Protein Families:	Druggable Genome, Phosphatase

Product images:

Coomassie blue staining of purified PPM1L protein (Cat# [TP318909]). The protein was produced from HEK293T cells transfected with PPM1L cDNA clone (Cat# [RC218909]) using MegaTran 2.0 (Cat# [TT210002]).