

## Product datasheet for **TP318852**

### RTL8B (NM\_001078173) Human Recombinant Protein

#### Product data:

Product Type:	Recombinant Proteins
Description:	Recombinant protein of human family with sequence similarity 127, member C (FAM127C), 20 µg
Species:	Human
Expression Host:	HEK293T
Expression cDNA Clone or AA Sequence:	>RC218852 protein sequence <b>Red</b> =Cloning site <b>Green</b> =Tags(s)

MEGRVQLMKALLARPLRPAARRWRNPIFPETFDGDTDLRPEFIVQTSSYMFVDENTFSNDALKVTFLIT  
RLTGPALQWVIPYIKKESPLLSYRGLAEMKRVFGWEEDEDF

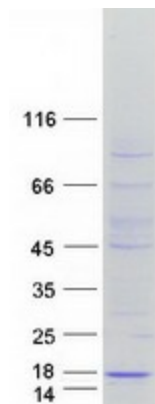
**TRTRPLEQKLISEEDLAANDILDYKDDDDKV**

Tag:	C-Myc/DDK
Predicted MW:	13.1 kDa
Concentration:	>0.05 µg/µL as determined by microplate BCA method
Purity:	> 80% as determined by SDS-PAGE and Coomassie blue staining
Buffer:	25 mM Tris-HCl, 100 mM glycine, pH 7.3, 10% glycerol
Preparation:	Recombinant protein was captured through anti-DDK affinity column followed by conventional chromatography steps.
Note:	For testing in cell culture applications, please filter before use. Note that you may experience some loss of protein during the filtration process.
Storage:	Store at -80°C.
Stability:	Stable for 12 months from the date of receipt of the product under proper storage and handling conditions. Avoid repeated freeze-thaw cycles.
RefSeq:	<a href="#">NP_001071641</a>
Locus ID:	441518
UniProt ID:	<a href="#">Q17RB0</a>
RefSeq Size:	2038



[View online »](#)

Cytogenetics: Xq26.3  
RefSeq ORF: 339  
Synonyms: CXX1c; FAM127C; MAR8B; SIRH4

**Product images:**

Coomassie blue staining of purified RTL8B protein (Cat# TP318852). The protein was produced from HEK293T cells transfected with RTL8B cDNA clone (Cat# [RC218852]) using MegaTran 2.0 (Cat# [TT210002]).