

Product datasheet for TP318842M

Eg5 (KIF11) (NM_004523) Human Recombinant Protein

Product data:

Product Type:	Recombinant Proteins
Description:	Recombinant protein of human kinesin family member 11 (KIF11), 100 µg
Species:	Human
Expression Host:	HEK293T
Expression cDNA Clone or AA Sequence:	>RC218842 representing NM_004523 Red=Cloning site Green=Tags(s)

MASQPNSSAKKKEEGKKNIQVVRCRPFNLAERKASAHSIVECDPVRKEVSVRTGGLADKSSRKTYTFDM
VFGASTKQIDVYRSVWCPILDEVIMGYNCTIFAYGQTGTGKTFTMEGERSPNEEYTWEEEDPLAGIIPRTL
HQIFEKLTDNNGTEFSVKVSLLEIYNEELFDLLNPSSDVSERLQMFDDPRNKRGVVIKGLEEITVHNKDEV
YQILEKGAARKRTTAATLMNAYSSRSVSVTIHMKETTIDGEELVKIGKLNLDLAGSENIGRSGAVDK
RAREAGNINQSLTLGRVITALVERTPHVPYRESKLRILQDSLGGRTRTSIIATISPASLNLEETLSTL
EYAHRAKNILNKPEVNQKLTKKALIKYEIEERLKRDLAAAREKNGVYISEENFRVMMSGKLTVQEEQIV
ELIEKIGAVEEELNRVTELFMDNKNELDQCKSDLQNKQLETTQKHLQETKQLVKEEYITSALESTEE
KLHDAASKLLNTEETTKDVSGLHSLDRKKAVDQHNAAEQDIFGKLNLSLNFNNMEELIKDGSSKQKAML
EVHKTFLFNGLLSSVSALDTITTVALGSLTIPENVSTHVSQIFNMILKEQSLAAESKTVLQELINVLKT
DLLSSLEMILSPTVWSILKINSQKHFKTSLTVADKIEDQKKELDGFLSILCNNLHELQENTICSLVES
QKQCGNLTEDLTKIKQTHSQELCKLMNLWTERFCALEEKENIQKPLSSVQENIQKSKDIVNKMTFHSQ
KFCADSDGFSQELRNFNQEGTKLVEESVKHSDKLNNGLEKISQETEQRCELSNTRTVYFSEQWVSSLNER
EQELHNLEEVVSSQCEASSSDITEKSDGRKAAHEKQHNIFLDQMTIDEDKLIQNLELNETIKIGLTKLN
CFLEQDLKLDIPTGTTTPQRKSYLYPSTLVRTEPREHLLDQLKRKQPELLMMLNCSENNKEETIPDVVVEE
AVLGQYTEEPLSQEPSVDAGVDCSSIGGVPFFQHKKSHGKDKENRGINTLERSKVEETTEHLVTKSRPLPL
RAQINL

TRTRPLEQKLISEEDLAANDILDYKDDDDKV

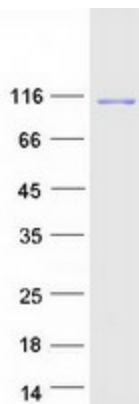
Tag:	C-Myc/DDK
Predicted MW:	119 kDa
Concentration:	>0.05 µg/µL as determined by microplate BCA method
Purity:	> 80% as determined by SDS-PAGE and Coomassie blue staining
Buffer:	25 mM Tris-HCl, 100 mM glycine, pH 7.3, 10% glycerol



[View online »](#)

Bioactivity:	Enzyme substrate (PMID: 28392145)
Preparation:	Recombinant protein was captured through anti-DDK affinity column followed by conventional chromatography steps.
Note:	For testing in cell culture applications, please filter before use. Note that you may experience some loss of protein during the filtration process.
Storage:	Store at -80°C.
Stability:	Stable for 12 months from the date of receipt of the product under proper storage and handling conditions. Avoid repeated freeze-thaw cycles.
RefSeq:	NP_004514
Locus ID:	3832
UniProt ID:	P52732
RefSeq Size:	4908
Cytogenetics:	10q23.33
RefSeq ORF:	3168
Synonyms:	EG5; HKSP; KNSL1; MCLMR; TRIP5
Summary:	This gene encodes a motor protein that belongs to the kinesin-like protein family. Members of this protein family are known to be involved in various kinds of spindle dynamics. The function of this gene product includes chromosome positioning, centrosome separation and establishing a bipolar spindle during cell mitosis. [provided by RefSeq, Jul 2008]
Protein Families:	Druggable Genome

Product images:



Coomassie blue staining of purified KIF11 protein (Cat# [TP318842]). The protein was produced from HEK293T cells transfected with KIF11 cDNA clone (Cat# [RC218842]) using MegaTran 2.0 (Cat# [TT210002]).