

Product datasheet for **TP318818M**

JAML (NM_001098526) Human Recombinant Protein

Product data:

Product Type:	Recombinant Proteins
Description:	Recombinant protein of human adhesion molecule, interacts with CXADR antigen 1 (AMICA1), transcript variant 1, 100 µg
Species:	Human
Expression Host:	HEK293T
Expression cDNA Clone or AA Sequence:	>RC218818 representing NM_001098526 Red =Cloning site Green =Tags(s)
	<p>MFCPLKLILLPVLLDYSLGLNDLNVSPPELTVHVGDSALMGCVFQSTEDKCIFKIDWTLSPGEHAKDEYV LYYYSNLSVPIGRFQNRVHLMGDILCNDGSLLLQDVQEADQGTyceIRLKGESQVFKKAVLHVLPEEP KELMVHVGGLIQMGCVFQSTEVKHVTKVEWIFSGRRAKEEIVFRYYHKLMSVEYSQSWGHFQNRVNLVG DIFRNDGSIMLQGVRESGGNYTCSIHLGNLVFKKTIVLHVSPEEPRTLVTPAALRPLVLGGNQLVIIVG IVCATILLPVLILIVKKTTCGNKSSVNSTVLVKNKKTNPKEIKPCHFERCEGEKHIYSPIIVREVIEE EEPSEKSEATYMTMHPVWPSLRSDRNNLSLEKKS GGGMPKTQQAF</p> <p>TRTRPLEQKLISEEDLAANDILDYKDDDDKV</p>
Tag:	C-Myc/DDK
Predicted MW:	44.2 kDa
Concentration:	>0.05 µg/µL as determined by microplate BCA method
Purity:	> 80% as determined by SDS-PAGE and Coomassie blue staining
Buffer:	25 mM Tris-HCl, 100 mM glycine, pH 7.3, 10% glycerol
Preparation:	Recombinant protein was captured through anti-DDK affinity column followed by conventional chromatography steps.
Note:	For testing in cell culture applications, please filter before use. Note that you may experience some loss of protein during the filtration process.
Storage:	Store at -80°C.
Stability:	Stable for 12 months from the date of receipt of the product under proper storage and handling conditions. Avoid repeated freeze-thaw cycles.
RefSeq:	<u>NP_001091996</u>



[View online »](#)

Locus ID: 120425

UniProt ID: [Q86YT9](#), [B3KUI3](#)

RefSeq Size: 1957

Cytogenetics: 11q23.3

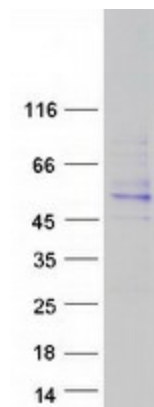
RefSeq ORF: 1182

Synonyms: AMICA; AMICA1; CREA7-1; CREA7-4; Gm638

Summary: Transmembrane protein of the plasma membrane of leukocytes that control their migration and activation through interaction with CXADR, a plasma membrane receptor found on adjacent epithelial and endothelial cells. The interaction between both receptors mediates the activation of gamma-delta T-cells, a subpopulation of T-cells residing in epithelia and involved in tissue homeostasis and repair. Upon epithelial CXADR-binding, JAML induces downstream cell signaling events in gamma-delta T-cells through PI3-kinase and MAP kinases. It results in proliferation and production of cytokines and growth factors by T-cells that in turn stimulate epithelial tissues repair. It also controls the transmigration of leukocytes within epithelial and endothelial tissues through adhesive interactions with epithelial and endothelial CXADR. [UniProtKB/Swiss-Prot Function]

Protein Families: Transmembrane

Product images:



Coomassie blue staining of purified JAML protein (Cat# [TP318818]). The protein was produced from HEK293T cells transfected with JAML cDNA clone (Cat# [RC218818]) using MegaTran 2.0 (Cat# [TT210002]).