

Product datasheet for **TP318816M**

RRBP1 (NM_001042576) Human Recombinant Protein

Product data:

Product Type:	Recombinant Proteins
Description:	Recombinant protein of human ribosome binding protein 1 homolog 180kDa (dog) (RRBP1), transcript variant 1, 100 µg
Species:	Human
Expression Host:	HEK293T
Expression cDNA Clone or AA Sequence:	>RC218816 representing NM_001042576 Red =Cloning site Green =Tags(s)

MDIYDTQTLGVVFGGFMVSAIGIFLVSTFSMKETSYEEALANQRKEMAKTHHQKVEKKKKEKTVEKKG
KTKKKKEEKPNGKIPDHDPAPNVTVLLREPVRAPAVAVAPTVPVQPIIVAPVATVPAMPQEKLASSPKDKK
KKEKKVAKVEPAVSSVNSIQVLTSKAAILETAPKEGRNTDVAQSPEAPKQEAPAKKKSGSKKKGPPDAD
GPLYLPYKTLVSTVGSMVFNEGEAQRLIEILSEKAGIIQDTHKATQKGDVPAILKRQLEEKEKLLATEQ
EDAAVAKSKLRELNKEMAAEKAKAAAGEAKVKKQLVAREQEITAVQARMQASYREHVKEVQQQLQGKIRTL
QEQLENGPNLTQLARLQQENSILRDALNQATSQVESKQNAELAKLRQELSKVSKELVEKSEAVRQDEQQRK
ALEAKAAFEKQVLQLQASHRESEALQKRLDEVSRLECHTQSSHASLRADA EKAQEQQQMAELHSLK
Q
SSEAEVRSKCEELSGLHGQLQEARAENSQLTERIRSIEALLEAGQARDAQDVQASQAEADQQQTRLKELE
SQVSGLEKEAIELREAVEQQKVKNNDLREKNWKAMEALATAEQACKEKLHSLTQAKEESEKQLCLIEAQT
MEALLALLPELSVLAQQNYTEWLQDLKEKGPTLLKHPPAPAEPSSDLASKLREAEETQSTLQAECDQYRS
ILAETEGMLRDLQKSVEEEEQVWRAKVGAAEEELQKSRVTVKHLEEIVEKLKGELESSDQVREHTSHLEA
ELEKHMAAASAECQNYAKEVAGLRQLLLESQSQLDAKSEAQKQSDDELALVRQQLSEMKSHVEDGDIAG
A
PASSPEAPPAEQDPVQLKTQLEWTEAILEDEQTQRQKLTAEFEEAQTSAACRLQEELEKLRTAGPLESSET
EEASQLKERLEKEKKLTSDDLGRAATRLQELLKTTQEQLAREKDTVKKLQEQLKAEDGSSSKEGTSV

TRTRPLEQKLISEEDLAANDILDYKDDDDKV

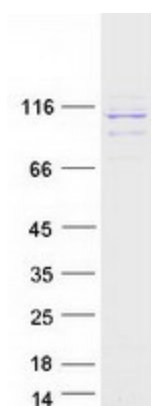
Tag:	C-Myc/DDK
Predicted MW:	108.5 kDa
Concentration:	>0.05 µg/µL as determined by microplate BCA method
Purity:	> 80% as determined by SDS-PAGE and Coomassie blue staining
Buffer:	25 mM Tris-HCl, 100 mM glycine, pH 7.3, 10% glycerol



[View online »](#)

Preparation:	Recombinant protein was captured through anti-DDK affinity column followed by conventional chromatography steps.
Note:	For testing in cell culture applications, please filter before use. Note that you may experience some loss of protein during the filtration process.
Storage:	Store at -80°C.
Stability:	Stable for 12 months from the date of receipt of the product under proper storage and handling conditions. Avoid repeated freeze-thaw cycles.
RefSeq:	<u>NP_001036041</u>
Locus ID:	6238
UniProt ID:	<u>Q9P2E9</u>
RefSeq Size:	3792
Cytogenetics:	20p12.1
RefSeq ORF:	2931
Synonyms:	ES/130; ES130; hES; p180; RRp
Summary:	This gene encodes a ribosome-binding protein of the endoplasmic reticulum (ER) membrane. Studies suggest that this gene plays a role in ER proliferation, secretory pathways and secretory cell differentiation, and mediation of ER-microtubule interactions. Alternative splicing has been observed and protein isoforms are characterized by regions of N-terminal decapeptide and C-terminal heptad repeats. Splicing of the tandem repeats results in variations in ribosome-binding affinity and secretory function. The full-length nature of variants which differ in repeat length has not been determined. Pseudogenes of this gene have been identified on chromosomes 3 and 7, and RRBP1 has been excluded as a candidate gene in the cause of Alagille syndrome, the result of a mutation in a nearby gene on chromosome 20p12. [provided by RefSeq, Apr 2012]
Protein Families:	Druggable Genome, Transmembrane

Product images:



Coomassie blue staining of purified RRBP1 protein (Cat# [TP318816]). The protein was produced from HEK293T cells transfected with RRBP1 cDNA clone (Cat# [RC218816]) using MegaTran 2.0 (Cat# [TT210002]).