

## Product datasheet for TP318815M

### Integrin alpha 9 (ITGA9) (NM\_002207) Human Recombinant Protein

#### Product data:

**Product Type:** Recombinant Proteins  
**Description:** Recombinant protein of human integrin, alpha 9 (ITGA9), 100 µg  
**Species:** Human  
**Expression Host:** HEK293T  
**Expression cDNA Clone or AA Sequence:** >RC218815 representing NM\_002207  
Red=Cloning site Green=Tags(s)

MGGPAAPRGAGRLRALLLALVWAGIPAGAYNLDPQRPVHFQGPADSFFGYAVLEHFHDNTRWVLVGAPKA  
 DSKYSPSVKSPGAVFKCRVHTNPDRRCTELDMARGKNRGTSCGKTCREDRDDEWMGVSLARQPKADGRVL  
 ACAHRWKNIIYEADHILPHGFCYIIPSNLQAKGRTLIPCYEYKKKYGEEHGSCQAGIAGFFTEELVVMG  
 APGSFYWAGTIKVLNLTNTYKLNDEVIMNRRYTYLGYAVTAGHFHSPSTIDVVGAPQDKGIGKVIYIF  
 RADRRSGTLIKIFQASGKKMGSYFGSSLCVAVDLNGDGLSDLLVGAPMFSEIRDEGQVTYINRNGALEE  
 QLALTGDGAYNAHFGESIASLDDLNDGFPDVAIGAPKEDDFAGAVIYHGDASGIVPQYSMKLSGQKIN  
 PVLRFMGQSIGGIDMDGNGYPDVTVGAFMSDSVLLRARPVITVDVSIFLPGSINITAPQCHDGGQPVN  
 CLNVTTCSFHHGKHVPGEIGLNYVLMADVAKKEKGQMPRVYFVLLGETMGQVTEKLQLTMEETCRHYVA  
 HVKRRVQDVISPIVFEAAYSLSEHVTGEEERLPLTPVLRWKKGQKIAQKNQTVFERNCRESDECAADLQ  
 LQGLLLSSMDEKTLYLALGAVKNISLNISISNLGDDAYDANVSFNVSRELFFINMWQKEEMGISCELLE  
 SDFLKCSVGFPMRSKSKYEFSVIFDTSHLGEEVLSFIVTAQSGNTERSES LHDNTLVLMVPLMHEVD  
 TSITGIMSPTS FVYGESVDAANFIQLDDLECHFQPINITLQVYNTGPSTLPGSSVSISFPNRLSSGGAEM  
 FHVQEMVVGQEKGNCSFQKNPTPCIIPQEENIFHTIFAFFTKSGRKVLDCEKPGISCLTAHCNFSALAK  
 EESRTIDIYMLLNTEILKKDSSSVIQFMSRAKVKVDPALRVVEIAHGNPEEVTWFEALHNLEPRGYVVG  
 WIIAISLLVGILIFLLLAVLLWKMGGFFRRRYKEIIEAEKNRKENEDSWDWWVQKNQ

TRTRPLEQKLISEEDLAANDILDYKDDDDKV

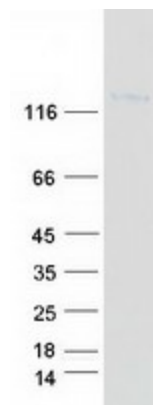
**Tag:** C-Myc/DDK  
**Predicted MW:** 111.8 kDa  
**Concentration:** >0.05 µg/µL as determined by microplate BCA method  
**Purity:** > 80% as determined by SDS-PAGE and Coomassie blue staining  
**Buffer:** 25 mM Tris-HCl, 100 mM glycine, pH 7.3, 10% glycerol



[View online »](#)

<b>Preparation:</b>	Recombinant protein was captured through anti-DDK affinity column followed by conventional chromatography steps.
<b>Note:</b>	For testing in cell culture applications, please filter before use. Note that you may experience some loss of protein during the filtration process.
<b>Storage:</b>	Store at -80°C.
<b>Stability:</b>	Stable for 12 months from the date of receipt of the product under proper storage and handling conditions. Avoid repeated freeze-thaw cycles.
<b>RefSeq:</b>	<a href="#">NP_002198</a>
<b>Locus ID:</b>	3680
<b>UniProt ID:</b>	<a href="#">Q13797</a> , <a href="#">Q8N6H6</a>
<b>RefSeq Size:</b>	3962
<b>Cytogenetics:</b>	3p22.2
<b>RefSeq ORF:</b>	3105
<b>Synonyms:</b>	ALPHA-RLC; ITGA4L; RLC
<b>Summary:</b>	This gene encodes an alpha integrin. Integrins are heterodimeric integral membrane glycoproteins composed of an alpha chain and a beta chain that mediate cell-cell and cell-matrix adhesion. The protein encoded by this gene, when bound to the beta 1 chain, forms an integrin that is a receptor for VCAM1, cytotactin and osteopontin. Expression of this gene has been found to be upregulated in small cell lung cancers. [provided by RefSeq, Jul 2008]
<b>Protein Families:</b>	Druggable Genome, Transmembrane
<b>Protein Pathways:</b>	Arrhythmogenic right ventricular cardiomyopathy (ARVC), Cell adhesion molecules (CAMs), Dilated cardiomyopathy, ECM-receptor interaction, Focal adhesion, Hypertrophic cardiomyopathy (HCM), Regulation of actin cytoskeleton

### Product images:



Coomassie blue staining of purified ITGA9 protein (Cat# [TP318815]). The protein was produced from HEK293T cells transfected with ITGA9 cDNA clone (Cat# [RC218815]) using MegaTran 2.0 (Cat# [TT210002]).