

Product datasheet for **TP318815L**

Integrin alpha 9 (ITGA9) (NM_002207) Human Recombinant Protein

Product data:

Product Type:	Recombinant Proteins
Description:	Recombinant protein of human integrin, alpha 9 (ITGA9), 1 mg
Species:	Human
Expression Host:	HEK293T
Expression cDNA Clone or AA Sequence:	>RC218815 representing NM_002207 Red =Cloning site Green =Tags(s)

MGGPAAPRGAGRLRALLLWVAGIPAGAYNLDPQRPVHFQGPADSFFGYAVLEHFDNTRWVVGAPKA
DSKYSPSVKSPGAVFKCRVHTNPDRRCTELDMARGKNRGTSCGKTCREDRDDEWMGVSLARQPKADGRVL
ACAHRWKNIYYEADHILPHGFCYIIPSNLQAKGRTLIPCYEYKKKYGEEHGSCQAGIAGFFTEELVVMG
APGSFYWAGTIKVLNLTNTYKLNDEVIMNRRYTYLGYAVTAGHFSHPSTIDVVGAPQDKGIGKVIYF
RADRRSGTLIKIFQASGKKMGSYFGSSLCAVDLNGDGLSDLLVGAPMFSEIRDEGQVTYINRNGALEE
QLALTGDGAYNAHFGESIASLDDLNDGFPDVAIGAPKEDDFAGAVIYHGDASGIVPQYSMKLSGQKIN
PVLRFMGQSIGGIDMDGNGYPDVTVGAFMSDSVLLRARPVITVDVSIFLPGSINITAPQCHDGGQPVN
CLNVTTCSFHHGKHVPGEIGLNYVLMADVAKKEKGQMPRVYFVLLGETMGQVTEKLQLTYMEETCRHYVA
HVKRRVQDVISPIVFEAAYSLSEHVTGEEERLPLTPVLRWKKGQKIAQKNQTVFERNCRESDCAADLQ
LQGLLLSSMDEKTLYLALGAVKNISLNISISNLGDDAYDANVSFNVSRELFFINMWQKEEMGISCELLE
SDFLKCSVGFPMRSKSKYEFSVIFDTSHLGEEEVLSFIVTAQSGNTERSESLHDNTLVLMVPLMHEVD
TSITGIMSPTSIFYGESVDAANFIQLDDLECHFQPINITLQVYNTGPSTLPGSSVSISFPNRLSSGGAEM
FHVQEMVVGQEKGNCSFQKNPTPCIPQEENIFHTIFAFFTKSGRKVLDCEKPGISCLTAHCNFSALAK
EESRTIDIYMLLNTEILKKDSSSVIQFMSRAKVKVDPALRVVEIAHGNPEEVTWFEALHNLEPRGYVVG
WIIAISLLVIGILIFLLLAVLLWKMGGFFRRRYKEIIEAEKNRKENEDSWDWWVQKNQ

TRTRPLEQKLISEEDLAANDILDYKDDDDKV

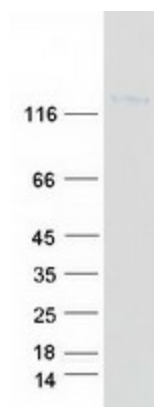
Tag:	C-Myc/DDK
Predicted MW:	111.8 kDa
Concentration:	>0.05 µg/µL as determined by microplate BCA method
Purity:	> 80% as determined by SDS-PAGE and Coomassie blue staining
Buffer:	25 mM Tris-HCl, 100 mM glycine, pH 7.3, 10% glycerol



[View online »](#)

Preparation:	Recombinant protein was captured through anti-DDK affinity column followed by conventional chromatography steps.
Note:	For testing in cell culture applications, please filter before use. Note that you may experience some loss of protein during the filtration process.
Storage:	Store at -80°C.
Stability:	Stable for 12 months from the date of receipt of the product under proper storage and handling conditions. Avoid repeated freeze-thaw cycles.
RefSeq:	NP_002198
Locus ID:	3680
UniProt ID:	Q13797 , Q8N6H6
RefSeq Size:	3962
Cytogenetics:	3p22.2
RefSeq ORF:	3105
Synonyms:	ALPHA-RLC; ITGA4L; RLC
Summary:	This gene encodes an alpha integrin. Integrins are heterodimeric integral membrane glycoproteins composed of an alpha chain and a beta chain that mediate cell-cell and cell-matrix adhesion. The protein encoded by this gene, when bound to the beta 1 chain, forms an integrin that is a receptor for VCAM1, cytotactin and osteopontin. Expression of this gene has been found to be upregulated in small cell lung cancers. [provided by RefSeq, Jul 2008]
Protein Families:	Druggable Genome, Transmembrane
Protein Pathways:	Arrhythmogenic right ventricular cardiomyopathy (ARVC), Cell adhesion molecules (CAMs), Dilated cardiomyopathy, ECM-receptor interaction, Focal adhesion, Hypertrophic cardiomyopathy (HCM), Regulation of actin cytoskeleton

Product images:



Coomassie blue staining of purified ITGA9 protein (Cat# [TP318815]). The protein was produced from HEK293T cells transfected with ITGA9 cDNA clone (Cat# [RC218815]) using MegaTran 2.0 (Cat# [TT210002]).