

Product datasheet for **TP318798L**

ARHGEF7 (NM_145735) Human Recombinant Protein

Product data:

| | |
|---------------------------------------|---|
| Product Type: | Recombinant Proteins |
| Description: | Recombinant protein of human Rho guanine nucleotide exchange factor (GEF) 7 (ARHGEF7), transcript variant 2, 1 mg |
| Species: | Human |
| Expression Host: | HEK293T |
| Expression cDNA Clone or AA Sequence: | >RC218798 representing NM_145735 Red =Cloning site Green =Tags(s) |

MNSAEQVTWLITLGVLESPKKTISDPEGFLQASLKDGWVLCRLLERLLPGTIEKVYPEPRSESECLSNI
REFLRGCGASLRLETFDANDLYQGQNFNKVLSLVTLNKVTADIGLSDSVCARPSSHRIKSFDSLGSQS
LHTRTSKLFQGGYRSLDMDNSNNQLVVRAKFNFQQTNEDELSFSKGDVIHVTRVEEGWWEGLNVRTG
WFPSNYVREVKASEKPVSPKSGTLKSPKGFDTTAINKSYYNVVLQNILETENEYSKELQTVLSTYLRPL
QTSEKLSSANISYLMGNLEEICSFQQMLVQSLEECTKLPEAQQRVGGCFLNLMPQMKTLYLYCANHPSA
VNVLTEHSEELGEFMETKGASSPGILVLTGSLKPFMRLDKYPTLLKELERHMEDYHTDRQDIQKSMAAF
KNLSAQCCQEVKRKRKELELQILTEAIRNWEGDDIKTLGNVTYMSQVLIQCAGSEEKNERYLLFPNVLLML
SASPRMSGFIYQGKLPTTGMTITKLEDSENHRNAFEISGSMIERILVSCNQQDLQEWVEHLQKQTKVTS
VGNPTIKPHSVSHTLPSHPVTPSSKHADSKPAPLTPAYHTLPHPSHHGTPHTTINWGPLEPPKTPKPWS
LSCLRPAPPLRPSAALCYKEDLSKSPKTMKLLPKRKPERKPSDEEFASRKSTAALAEEDAQILKVIEAYC
TSAKTRQTLNSTWQGTDLMHNVHLADDDQPSLDSLGRSSLSRLEPSDLSSESDYDSIWTAAHSYRMGSTS
RKSCCSYISHQN

TRTRPLEQKLISEEDLAANDILDYKDDDDKV

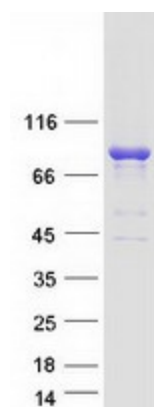
| | |
|----------------|--|
| Tag: | C-Myc/DDK |
| Predicted MW: | 87.6 kDa |
| Concentration: | >0.05 µg/µL as determined by microplate BCA method |
| Purity: | > 80% as determined by SDS-PAGE and Coomassie blue staining |
| Buffer: | 25 mM Tris-HCl, 100 mM glycine, pH 7.3, 10% glycerol |
| Preparation: | Recombinant protein was captured through anti-DDK affinity column followed by conventional chromatography steps. |



[View online »](#)

| | |
|--------------------------|--|
| Note: | For testing in cell culture applications, please filter before use. Note that you may experience some loss of protein during the filtration process. |
| Storage: | Store at -80°C. |
| Stability: | Stable for 12 months from the date of receipt of the product under proper storage and handling conditions. Avoid repeated freeze-thaw cycles. |
| RefSeq: | NP_663788 |
| Locus ID: | 8874 |
| UniProt ID: | Q14155 , Q5W9H1 |
| RefSeq Size: | 5304 |
| Cytogenetics: | 13q34 |
| RefSeq ORF: | 2346 |
| Synonyms: | BETA-PIX; COOL-1; COOL1; Nbla10314; P50; P50BP; P85; P85COOL1; P85SPR; PAK3; PIXB |
| Summary: | This gene encodes a protein that belongs to a family of cytoplasmic proteins that activate the Ras-like family of Rho proteins by exchanging bound GDP for GTP. It forms a complex with the small GTP binding protein Rac1 and recruits Rac1 to membrane ruffles and to focal adhesions. Multiple alternatively spliced transcript variants encoding different isoforms have been observed for this gene. [provided by RefSeq, Mar 2016] |
| Protein Pathways: | Regulation of actin cytoskeleton |

Product images:



Coomassie blue staining of purified ARHGEF7 protein (Cat# [TP318798]). The protein was produced from HEK293T cells transfected with ARHGEF7 cDNA clone (Cat# [RC218798]) using MegaTran 2.0 (Cat# [TT210002]).