

Product datasheet for TP318796M

Kinesin 5C (KIF5C) (NM_004522) Human Recombinant Protein

Product data:

Product Type:	Recombinant Proteins
Description:	Recombinant protein of human kinesin family member 5C (KIF5C), 100 µg
Species:	Human
Expression Host:	HEK293T
Expression cDNA Clone or AA Sequence:	>RC218796 representing NM_004522 Red=Cloning site Green=Tags(s)

MADPAECSIKVMCRFRPLNEAEILRGDKFIPKFKGDETVWIGQGKPYVFDRLVPPNTTQEQVYNACAKQI
VKDVLEGYNGTIFAYGQTSSGKTHMTEGKLDHPQLMGIIPRIAHDFDHIYSMDENLEFHIKVSFYFEIYL
DKIRDLLDVSKTNLAVHEDKNRVPYVKGCTERFVSSPEEVMVIDEGKANRHVAVTNMNEHSSRSHSIFL
INIKQENVETEKKLSGKLYLVDLAGSEKVSKTGAEGAVLDEAKNINKSLSALGNVISALAEGTKTHVPYR
DSKMTRILQDSLGGNCRRTTIVICCSPSVFNEAETKSTLMFGQRAKTIKNTVSVNLELTAEEWKKKYEKEK
EKNKTLKNVIQHLEMELNRWRNGEAVPEDEQISAKDQKNLEPCDNTPIIDNIAPVWAGISTEEKEYDEE
ISSLYRQLDDKDDEINQQSQLAEKLLKQMLDQDELLASTRRDYEKIQEELTRLQIENEAADKDEVKEVLQA
LEELAVNYDQKSQEVEDKTRANEQLTDELAQKTTTLLTQRELSQLQELSNHQKRATEILNLLLKDLGE
IGGIIGTNDVKTADVNGVIEEFTMARLYISKMKSEVKSLSVNRKQLESAQMDSNRKMNASERELAACQ
LLISQHEAKIKSLTDYMQNMEQKRRQLEESQDSLSEELAKLRAQEKMHVFSQDKEKEHLRLQDAEEMK
KALEQQMESHREAHQKQLSRLRDEIEEKQKIIDEIRDNLNQLQLEQEKLSDDYNKLIKIEDQEREMKLEKL
LLLNDKREQAREDKGLLETVSRELQTLHNLRLKLFVQDLTTRVKKSVELDNDDGGGSAQKQKISFLENN
LEQLTKVHKQLVRDNADLRCELPKLEKRLRATAERVKALESALKEAKENAMRDRKRYQQEVDRIKEAVRA
KNMARRAHSQAIAKPIRPGHYPASSPTAVHAIRGGGGSSSNSTHYQK

TRTRPLEQKLISEEDLAANDILDYKDDDDKV

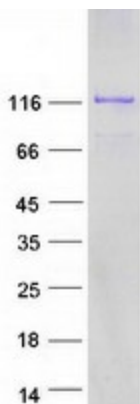
Tag:	C-Myc/DDK
Predicted MW:	109.3 kDa
Concentration:	>0.05 µg/µL as determined by microplate BCA method
Purity:	> 80% as determined by SDS-PAGE and Coomassie blue staining
Buffer:	25 mM Tris-HCl, 100 mM glycine, pH 7.3, 10% glycerol
Preparation:	Recombinant protein was captured through anti-DDK affinity column followed by conventional chromatography steps.



[View online »](#)

Note:	For testing in cell culture applications, please filter before use. Note that you may experience some loss of protein during the filtration process.
Storage:	Store at -80°C.
Stability:	Stable for 12 months from the date of receipt of the product under proper storage and handling conditions. Avoid repeated freeze-thaw cycles.
RefSeq:	NP_004513
Locus ID:	3800
UniProt ID:	O60282 , Q59GB8
RefSeq Size:	6927
Cytogenetics:	2q23.1-q23.2
RefSeq ORF:	2871
Synonyms:	CDCBM2; KINN; NKHC; NKHC-2; NKHC2
Summary:	The protein encoded by this gene is a kinesin heavy chain subunit involved in the transport of cargo within the central nervous system. The encoded protein, which acts as a tetramer by associating with another heavy chain and two light chains, interacts with protein kinase CK2. Mutations in this gene have been associated with complex cortical dysplasia with other brain malformations-2. Two transcript variants, one protein-coding and the other non-protein coding, have been found for this gene. [provided by RefSeq, Jul 2015]
Protein Families:	Druggable Genome

Product images:



Coomassie blue staining of purified KIF5C protein (Cat# [TP318796]). The protein was produced from HEK293T cells transfected with KIF5C cDNA clone (Cat# [RC218796]) using MegaTran 2.0 (Cat# [TT210002]).