

Product datasheet for **TP318794**

CMPK2 (NM_207315) Human Recombinant Protein

Product data:

Product Type:	Recombinant Proteins
Description:	Recombinant protein of human cytidine monophosphate (UMP-CMP) kinase 2, mitochondrial (CMPK2), nuclear gene encoding mitochondrial protein, 20 µg
Species:	Human
Expression Host:	HEK293T
Expression cDNA Clone or AA Sequence:	>RC218794 representing NM_207315 Red =Cloning site Green =Tags(s) MAFARRLLRGPLSGPLLGRRGVCAGAMAPRRFVLELPDCTLAHFALGADAPGDADAPDPRLAALLGPPE RSYSLCVPVTPDAGCGARVRAARLHQRLRHQLRRGPFQRCQLLRLLCYCPGGQAGGAQQGFLLRDLDDP DTRQALLELLGACQEAPRPHLGEFEADPRGQLWQRLWEVQDGRRLQVGAQVVPVPEPLHPVVPDLPS VVFDPREAAAVLEECTSFIPEARAVLDLVDQCPKQIQKGFQVVAIEGLDATGKTTVTQSVADSLKAVL LKSPSCIGQWRKIFDDEPTIIRRAFYSLGNYIVASEIAKESAKSPVIVDRYWHSTATYAIATEVSGGLQ HLPPAHPVYQWPEDLLKPDLLLLTVSPEERLQRLQGRGMEKTREEAELEANSVFRQKVEMSYQRMENP GCHVVDASPSREKVLQTVLSLIQNSFSEP TRTRPLEQKLISEEDLAANDILDYKDDDDKV
Tag:	C-Myc/DDK
Predicted MW:	49.3 kDa
Concentration:	>0.05 µg/µL as determined by microplate BCA method
Purity:	> 80% as determined by SDS-PAGE and Coomassie blue staining
Buffer:	25 mM Tris-HCl, 100 mM glycine, pH 7.3, 10% glycerol
Preparation:	Recombinant protein was captured through anti-DDK affinity column followed by conventional chromatography steps.
Note:	For testing in cell culture applications, please filter before use. Note that you may experience some loss of protein during the filtration process.
Storage:	Store at -80°C.
Stability:	Stable for 12 months from the date of receipt of the product under proper storage and handling conditions. Avoid repeated freeze-thaw cycles.



[View online >](#)

RefSeq: [NP_997198](#)

Locus ID: 129607

UniProt ID: [Q5EBM0](#)

RefSeq Size: 3009

Cytogenetics: 2p25.2

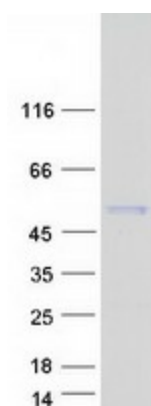
RefSeq ORF: 1347

Synonyms: NDK; TMPK2; TYKi; UMP-CMPK2

Summary: This gene encodes one of the enzymes in the nucleotide synthesis salvage pathway that may participate in terminal differentiation of monocytic cells. Multiple transcript variants encoding different isoforms have been found for this gene. [provided by RefSeq, Feb 2012]

Protein Pathways: Metabolic pathways, Pyrimidine metabolism

Product images:



Coomassie blue staining of purified CMPK2 protein (Cat# TP318794). The protein was produced from HEK293T cells transfected with CMPK2 cDNA clone (Cat# [RC218794]) using MegaTran 2.0 (Cat# [TT210002]).