

Product datasheet for **TP318774**

Phosphoglucomutase 5 (PGM5) (NM_021965) Human Recombinant Protein

Product data:

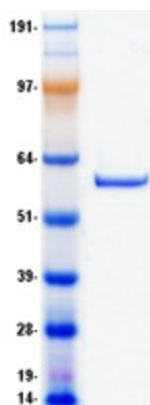
| | |
|---------------------------------------|--|
| Product Type: | Recombinant Proteins |
| Description: | Recombinant protein of human phosphoglucomutase 5 (PGM5), 20 µg |
| Species: | Human |
| Expression Host: | HEK293T |
| Expression cDNA Clone or AA Sequence: | Recombinant protein was produced with TrueORF clone, RC218774. |
| Tag: | C-Myc/DDK |
| Predicted MW: | 62 kDa |
| Concentration: | >0.05 µg/µL as determined by microplate BCA method |
| Purity: | > 80% as determined by SDS-PAGE and Coomassie blue staining |
| Buffer: | 25 mM Tris-HCl, 100 mM glycine, pH 7.3, 10% glycerol |
| Preparation: | Recombinant protein was captured through anti-DDK affinity column followed by conventional chromatography steps. |
| Note: | For testing in cell culture applications, please filter before use. Note that you may experience some loss of protein during the filtration process. |
| Storage: | Store at -80°C. |
| Stability: | Stable for 12 months from the date of receipt of the product under proper storage and handling conditions. Avoid repeated freeze-thaw cycles. |
| RefSeq: | NP_068800 |
| Locus ID: | 5239 |
| UniProt ID: | Q15124 |
| RefSeq Size: | 3341 |
| Cytogenetics: | 9q21.11 |
| RefSeq ORF: | 1701 |
| Synonyms: | PGMRP |


[View online »](#)

Summary: Phosphoglucomutases (EC 5.2.2.2.), such as PGM5, are phosphotransferases involved in interconversion of glucose-1-phosphate and glucose-6-phosphate. PGM activity is essential in formation of carbohydrates from glucose-6-phosphate and in formation of glucose-6-phosphate from galactose and glycogen (Edwards et al., 1995 [PubMed 8586438]).[supplied by OMIM, Mar 2008]

Protein Families: Druggable Genome

Product images:



Coomassie blue staining of purified PGM5 protein (Cat# TP318774). The protein was produced from HEK293T cells transfected with PGM5 cDNA clone (Cat# [RC218774]) using MegaTran 2.0 (Cat# [TT210002]).