

## Product datasheet for **TP318764**

### HLA-DRB1 (NM\_002124) Human Recombinant Protein

#### Product data:

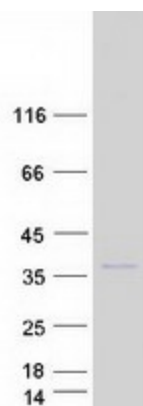
Product Type:	Recombinant Proteins
Description:	Recombinant protein of human major histocompatibility complex, class II, DR beta 1 (HLA-DRB1), 20 µg
Species:	Human
Expression Host:	HEK293T
Expression cDNA Clone or AA Sequence:	>Peptide sequence encoded by RC218764 <b>Blue</b> =ORF <b>Red</b> =Cloning site <b>Green</b> =Tag(s)
	 MVCLKLPGGSCMTALTVTLMVLSSPLALSGDTRPRFLWQPKRECHFFNGTERVRFDRYFYNQEESVRF DSDVGEFRAVTELRPDAEYWNSQKDILEQARA AVDTYCRHNYGVESFTVQRRVQPKVTVPYPSKTQPL QHHNLLVCSVSGFYPGSIEVRWFLNGQEEKAGMVSTGLIQNGDWFQTLVMLETVPRSGEVYTCQVEHP SVTSPLTVEWRARSESAQSKMLSGVGGFVLGLLFLGAGLFIYFRNQKGHSGLQPTGFLS <b>TRTRPLEQKLISEEDLAANDILDYKDDDDKV</b>
	Recombinant protein using RC218764 also available, <a href="#">TP318764M</a>
Tag:	C-Myc/DDK
Predicted MW:	29.9 kDa
Concentration:	>0.05 µg/µL as determined by microplate BCA method
Purity:	> 80% as determined by SDS-PAGE and Coomassie blue staining
Buffer:	25 mM Tris-HCl, 100 mM glycine, pH 7.3, 10% glycerol
Preparation:	Recombinant protein was captured through anti-DDK affinity column followed by conventional chromatography steps.
Note:	For testing in cell culture applications, please filter before use. Note that you may experience some loss of protein during the filtration process.
Storage:	Store at -80°C.
Stability:	Stable for 12 months from the date of receipt of the product under proper storage and handling conditions. Avoid repeated freeze-thaw cycles.
RefSeq:	<a href="#">NP_002115</a>
Locus ID:	3123



[View online »](#)

UniProt ID:	<a href="#">P01911</a>
RefSeq Size:	1182
Cytogenetics:	6p21.32
RefSeq ORF:	798
Synonyms:	DRB1; HLA-DR1B; HLA-DRB; SS1
Summary:	<p>HLA-DRB1 belongs to the HLA class II beta chain paralogs. The class II molecule is a heterodimer consisting of an alpha (DRA) and a beta chain (DRB), both anchored in the membrane. It plays a central role in the immune system by presenting peptides derived from extracellular proteins. Class II molecules are expressed in antigen presenting cells. The beta chain is approximately 26-28 kDa. It is encoded by 6 exons. Exon one encodes the leader peptide; exons 2 and 3 encode the two extracellular domains; exon 4 encodes the transmembrane domain; and exon 5 encodes the cytoplasmic tail. Within the DR molecule the beta chain contains all the polymorphisms specifying the peptide binding specificities. Hundreds of DRB1 alleles have been described and some alleles have increased frequencies associated with certain diseases or conditions. For example, DRB1*1302 has been related to acute and chronic hepatitis B virus persistence. There are multiple pseudogenes of this gene. [provided by RefSeq, Jul 2020]</p>
Protein Families:	Transmembrane
Protein Pathways:	Allograft rejection, Antigen processing and presentation, Asthma, Autoimmune thyroid disease, Cell adhesion molecules (CAMs), Graft-versus-host disease, Hematopoietic cell lineage, Systemic lupus erythematosus, Type I diabetes mellitus, Viral myocarditis

### Product images:



Coomassie blue staining of purified HLA-DRB1 protein (Cat# TP318764). The protein was produced from HEK293T cells transfected with HLA-DRB1 cDNA clone (Cat# [RC218764]) using MegaTran 2.0 (Cat# [TT210002]).