

Product datasheet for TP318763M

TFIIE alpha (GTF2E1) (NM_005513) Human Recombinant Protein

Product data:

Product Type:	Recombinant Proteins
Description:	Recombinant protein of human general transcription factor IIE, polypeptide 1, alpha 56kDa (GTF2E1), 100 µg
Species:	Human
Expression Host:	HEK293T
Expression cDNA Clone or AA Sequence:	>RC218763 representing NM_005513 Red=Cloning site Green=Tags(s)

MADPDVLTEVPAALKRLAKYVIRGFYGIEHALALDILIRNSCVKEEDMLELLKFDRKQLRSVLNNLKGDK
FIKCRMRVETAADGKTTRHNYYFINYRTLNVVVKYKLDHMRRRIETDERDSTNRASFKCPVCSSTFTDLE
ANQLFDPMTGTFRCTFCHTEVEEDESAMPKKDARTLLARFNEQIEPIYALLRETEDVNLAYEILEPEPTE
IPALKQSKDHAATTAGAASLAGGHHREAWATKGPSYEDLYTQNVVINMDDQEDLHRASLEGKSAKERPIW
LRESTVQGAYGSEDMKEGGIDMDAFQEREEGHAGPDDNEEVMRALLIHEKKTSSAMAGSVGAAAPVTAAN
GDDSESETSESDDSPRPAAVAVHKREEDDEEDEFEEVADDPIMVMVAGRPFYSYSEVSQRPELVAQMTP
EEKEAYIAMGQRMFEDLFE

TRTRPLEQKLISEEDLAANDILDYKDDDDKV

Tag:	C-Myc/DDK
Predicted MW:	49.3 kDa
Concentration:	>0.05 µg/µL as determined by microplate BCA method
Purity:	> 80% as determined by SDS-PAGE and Coomassie blue staining
Buffer:	25 mM Tris-HCl, 100 mM glycine, pH 7.3, 10% glycerol
Preparation:	Recombinant protein was captured through anti-DDK affinity column followed by conventional chromatography steps.
Note:	For testing in cell culture applications, please filter before use. Note that you may experience some loss of protein during the filtration process.
Storage:	Store at -80°C.
Stability:	Stable for 12 months from the date of receipt of the product under proper storage and handling conditions. Avoid repeated freeze-thaw cycles.



[View online »](#)

RefSeq: [NP_005504](#)

Locus ID: 2960

UniProt ID: [P29083](#)

RefSeq Size: 2969

Cytogenetics: 3q13.33

RefSeq ORF: 1317

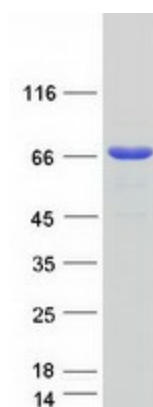
Synonyms: FE; TF2E1; TFIIE-A

Summary: Recruits TFIIH to the initiation complex and stimulates the RNA polymerase II C-terminal domain kinase and DNA-dependent ATPase activities of TFIIH. Both TFIIH and TFIIE are required for promoter clearance by RNA polymerase.[UniProtKB/Swiss-Prot Function]

Protein Families: Transcription Factors

Protein Pathways: Basal transcription factors

Product images:



Coomassie blue staining of purified GTF2E1 protein (Cat# [TP318763]). The protein was produced from HEK293T cells transfected with GTF2E1 cDNA clone (Cat# [RC218763]) using MegaTran 2.0 (Cat# [TT210002]).