

Product datasheet for **TP318746L**

PROP1 (NM_006261) Human Recombinant Protein

Product data:

Product Type: Recombinant Proteins

Description: Recombinant protein of human PROP paired-like homeobox 1 (PROP1), 1 mg

Species: Human

Expression Host: HEK293T

**Expression cDNA Clone
or AA Sequence:** >RC218746 protein sequence
Red=Cloning site **Green**=Tags(s)

MEAERRRQA EKPKKGRVGSLLPERHPATGTPPTTV DSSAPPCRRLPGAGGGRSRFSPQGGQRGRPHSRR
RHRTTFSPVQLEQLES AFGRNQYPDIWARESLARDTGLSEARIQVWFQNRRAKQRKQERSLLQPLAHLSP
AAFSSFLPESTAC PYSYAAPPPVT CFPHPYSHALPSQPSTGGAFALSHQSEDWYPTLHPAPAGHLPCPP
PPPMLPLSLEPSKSWN

TRTRPLEQKLISEEDLAANDILDYKDDDDKV

Tag: C-Myc/DDK

Predicted MW: 24.8 kDa

Concentration: >0.05 µg/µL as determined by microplate BCA method

Purity: > 80% as determined by SDS-PAGE and Coomassie blue staining

Buffer: 25 mM Tris-HCl, 100 mM glycine, pH 7.3, 10% glycerol

Preparation: Recombinant protein was captured through anti-DDK affinity column followed by conventional chromatography steps.

Note: For testing in cell culture applications, please filter before use. Note that you may experience some loss of protein during the filtration process.

Storage: Store at -80°C.

Stability: Stable for 12 months from the date of receipt of the product under proper storage and handling conditions. Avoid repeated freeze-thaw cycles.

RefSeq: [NP_006252](#)

Locus ID: 5626

UniProt ID: [O75360](#), [A0A0G2JQ02](#)



[View online >](#)

RefSeq Size: 1464

Cytogenetics: 5q35.3

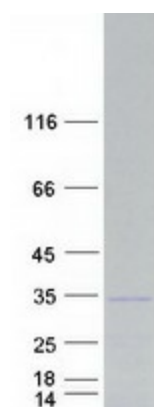
RefSeq ORF: 678

Synonyms: CPHD2; PROP-1

Summary: This gene encodes a paired-like homeodomain transcription factor in the developing pituitary gland. Expression occurs prior to and is required for expression of pou domain transcription factor 1, which is responsible for pituitary development and hormone expression. Mutations in this gene have been associated with combined pituitary hormone deficiency-2 as well as deficiencies in luteinizing hormone, follicle-stimulating hormone, growth hormone, prolactin, and thyroid-stimulating hormone. [provided by RefSeq, Sep 2011]

Protein Families: Druggable Genome, Transcription Factors

Product images:



Coomassie blue staining of purified PROP1 protein (Cat# [TP318746]). The protein was produced from HEK293T cells transfected with PROP1 cDNA clone (Cat# [RC218746]) using MegaTran 2.0 (Cat# [TT210002]).