

## Product datasheet for **TP318736L**

### SLC34A2 (NM\_006424) Human Recombinant Protein

#### Product data:

Product Type:	Recombinant Proteins
Description:	Recombinant protein of human solute carrier family 34 (sodium phosphate), member 2 (SLC34A2), 1 mg
Species:	Human
Expression Host:	HEK293T
Expression cDNA Clone or AA Sequence:	>Peptide sequence encoded by RC218736 Blue=ORF Red=Cloning site Green=Tag(s)

MAPWPELGDAQPNPDKYLEGAAGQQPTAPDKSKETNKTDNTEAPVTKIELLPSYSTATLIDEPTVDDP  
WNLPTLQDSGIKWSERDTKGKILCFFQGIGRLLLLGLYFFVCSLDILSSAFQLVGGKMGAGQFFSNSS  
IMSNPLLGLVIGLVTLVLVQSSSTSTSIVSMVSSLLTVRAAIIIMGANIGTSITNTIVALMQVGDR  
SEFRRAFAGATVHDFFNWLSVLVLLPVEVATHYLEIITQLIVESFHFKNGEDAPDLLKVITKPFTKLIV  
QLDKKVISQIAMNDEKAKNKSIVKIWCKTFTNKTQINVTVPSTANCTSPSLCWTGDIQNWTMKNVTYKE  
NIAKCQHIFVNFHLPDLAVGTILLILLSLLVLCGLMIVKILGSVLKGVATVIKKTINTDFPFPAWL  
TGYLAILVGAGMTFIVQSSSVFTSALTPLIGIGVITIERAYPLTLGNSIGTTTTAILAALASPGNALRS  
SLQIALCHFFFNISGILLWYPIFTRLPIMAKGLGNISAKYRWFVYLIIFFLIPLTVFGLSLAGW  
RVLVGVGVPVVFIIILVLCRLQLSRCPRVLPKQLQNWNLPLWMRSLKPWDAVSKFTGCFQMRCCCC  
CRVCCRACLLCGCPKCCRCCKCEDLEEAEQEGQDVPVKAPETFDNITISREAQGEVPASDSKTECTAL  
SGPTRTRPLEQKLISEEDLAANDILDYKDDDDKV

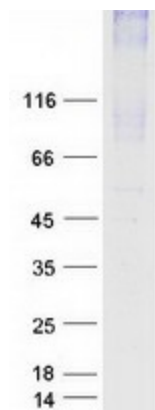
Recombinant protein using RC218736 also available, [TP318736](#)

Tag:	C-Myc/DDK
Predicted MW:	75.5 kDa
Concentration:	>0.05 µg/µL as determined by microplate BCA method
Purity:	> 80% as determined by SDS-PAGE and Coomassie blue staining
Buffer:	25 mM Tris-HCl, 100 mM glycine, pH 7.3, 10% glycerol
Preparation:	Recombinant protein was captured through anti-DDK affinity column followed by conventional chromatography steps.
Note:	For testing in cell culture applications, please filter before use. Note that you may experience some loss of protein during the filtration process.



[View online »](#)

<b>Storage:</b>	Store at -80°C.
<b>Stability:</b>	Stable for 12 months from the date of receipt of the product under proper storage and handling conditions. Avoid repeated freeze-thaw cycles.
<b>RefSeq:</b>	<a href="#">NP_006415</a>
<b>Locus ID:</b>	10568
<b>UniProt ID:</b>	<a href="#">O95436</a>
<b>RefSeq Size:</b>	2280
<b>Cytogenetics:</b>	4p15.2
<b>RefSeq ORF:</b>	2079
<b>Synonyms:</b>	NAPI-3B; NAPI-IIb; NPTIIb; PULAM
<b>Summary:</b>	The protein encoded by this gene is a pH-sensitive sodium-dependent phosphate transporter. Phosphate uptake is increased at lower pH. Defects in this gene are a cause of pulmonary alveolar microlithiasis. Three transcript variants encoding two different isoforms have been found for this gene. [provided by RefSeq, May 2010]
<b>Protein Families:</b>	Transmembrane

**Product images:**

Coomassie blue staining of purified SLC34A2 protein (Cat# [TP318736]). The protein was produced from HEK293T cells transfected with SLC34A2 cDNA clone (Cat# [RC218736]) using MegaTran 2.0 (Cat# [TT210002]).