

Product datasheet for TP318730M

Phospholipase A2 (PLB1) (NM_153021) Human Recombinant Protein

Product data:

Product Type: Recombinant Proteins
Description: Recombinant protein of human phospholipase B1 (PLB1), 100 µg
Species: Human
Expression Host: HEK293T
Expression cDNA Clone or AA Sequence: >RC218730 representing NM_153021
Red=Cloning site Green=Tags(s)

MGLRPGIFLLELLLLLGGQTPQIHSTPRKSTLEGQLWPETLKNSPFPCNPKNLGVNMPKSVHSLKPSDI
 KFVAAIGNLEIPDPDPTGDLEKQDWTERPQQVCMGMVMTVLSDIIRYFSPVMPVCHTGKRVIPHDGAED
 LWIQAQELVRNMKENLQLDFQFDWKLINVFFSNASQCYLCPAQNGLAAGGVDLMGVLDYLDYQVEVPR
 FVNLVDLSEVAEVSRYHGTWLSPAPEPCNCSEETTRLAKVVMQWSYQEAWSNLLASSRYSEQESFTVVF
 QPFFYETTPSLHSEDPRLQDSTTLAWHLWNRMMEPAGEKDEPLSVKHGRPMKCPSESPLYFSYRNSNYL
 TRLQKPQDKLEVREGAEIRCPDKDPSDTVPTSVHRLKPADINVIGALGDSLTAGNGAGSTPGNVLDVLTQ
 YRGLSWSVGGDENIGTVTTLANILREFNPSLKGFSVGTGKETSNAFLNQAVAGGRAEDLPVQARRLVLDL
 MKNDTRIHFAQEDWKIITLFIGGNDLDCDFCNDLVHYSQNFDTNIGKALDILHAEVPRFVNLVTVLEIVN
 LRELYQEKKVYCPMILRSLCPCVLKFDNSTELATLIEFNKKFQEKTHQLIESGRYDTREDFTVVVQPF
 FENVDMPKTSEGLPDNSFFAPDCFHFSKSHSRAASALWNNMLEPVGQKTRRHKFENKINICPNQVQPF
 LRTYKNSMQGHGTWLPDRAPSALHPTSVHALRPADIQVVAALGDSLTAGNGIGSKPDDLDPVTTQYRG
 LSYSAGGDGSLNVTLLPNILREFNRNLTGYAVGTGDANDTNAFLNQAVPGAKAEDLMSQVQTLMQMKMD
 DHRVNFHEDWKVITVLIGGSDLCDYCTDSNLYSAANFVDHLRNALDVLHREVPRVLVNLVDFLNPTIMRQ
 VFLGNPKCPVQQASVLCNCVLTRENSQELARLEAFSRAVSSMRELVGSGRYDTQEDFSVLQPPFFQN
 IQLPVADGLPDTSEFFAPDCIHPNQKFHSQLARALWNTMLEPLGSKTETLDRAMPITCPTQNEPFLRT
 PRNSNYTYPIKPAIENWGSDFLCTEWEKASNSVPTSVHQLRPADIKVVAALGDSLTTAVGARPNNSSDLPT
 SWRGLSWSIGGDGNLEHTHTLTPNILKKNPNYLLGFSTSTWEGTAGLNVAEAGARARDMPAQAWDLVERMK
 NSPDINLEKDWKLVTLFIGVNDLCHYCENPEAHLATEYVQHIQQALDILSEELPRAFVNVVEVMELASLY
 QGQGGKCAMLAAQNNCTCLRHSQSSLEKQELKKNWNLQHGSISSFSYWHQYTRQREDFAVVQPPFFQNTLT
 PLNERGDTDLTFFSEDCFHFSRGAEMAIALWNNMLEPVGRKTTSSNFTHSRAKLCPSPEPPLYTLR
 NSRLLPDQAEAEPEVLYWAVPVAAGVGLVVGIIIGTVVWRCRRGGRRPPMSLRTVAL

TRTRPLEQKLISEEDLAANDILDYKDDDDKV

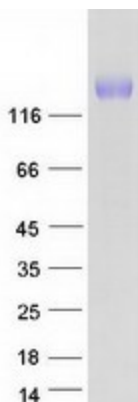
Tag: C-Myc/DDK
Predicted MW: 162.9 kDa



[View online »](#)

Concentration:	>0.05 µg/µL as determined by microplate BCA method
Purity:	> 80% as determined by SDS-PAGE and Coomassie blue staining
Buffer:	25 mM Tris-HCl, 100 mM glycine, pH 7.3, 10% glycerol
Preparation:	Recombinant protein was captured through anti-DDK affinity column followed by conventional chromatography steps.
Note:	For testing in cell culture applications, please filter before use. Note that you may experience some loss of protein during the filtration process.
Storage:	Store at -80°C.
Stability:	Stable for 12 months from the date of receipt of the product under proper storage and handling conditions. Avoid repeated freeze-thaw cycles.
RefSeq:	NP_694566
Locus ID:	151056
UniProt ID:	Q6P1J6 , B2RWP8
RefSeq Size:	5063
Cytogenetics:	2p23.2
RefSeq ORF:	4374
Synonyms:	PLB; PLB/LIP
Summary:	This gene encodes a membrane-associated phospholipase that displays lysophospholipase and phospholipase A2 activities through removal of sn-1 and sn-2 fatty acids of glycerophospholipids. In addition, it displays lipase and retinyl ester hydrolase activities. The encoded protein is highly conserved and is composed of a large, glycosylated extracellular domain composed of four tandem homologous domains, followed by a hydrophobic segment that anchors the enzyme to the membrane and a short C-terminal cytoplasmic tail. This gene has been identified as a candidate rheumatoid arthritis risk gene. [provided by RefSeq, Jul 2016]
Protein Families:	Transmembrane

Product images:



Coomassie blue staining of purified PLB1 protein (Cat# [TP318730]). The protein was produced from HEK293T cells transfected with PLB1 cDNA clone (Cat# [RC218730]) using MegaTran 2.0 (Cat# [TT210002]).

