

## Product datasheet for TP318730L

### Phospholipase A2 (PLB1) (NM\_153021) Human Recombinant Protein

#### Product data:

**Product Type:** Recombinant Proteins  
**Description:** Recombinant protein of human phospholipase B1 (PLB1), 1 mg  
**Species:** Human  
**Expression Host:** HEK293T  
**Expression cDNA Clone or AA Sequence:** >RC218730 representing NM\_153021  
Red=Cloning site Green=Tags(s)

MGLRPGIFLLELLLLLGGQTPQIHSTPRKSTLEGQLWPETLKNPFPNPNKLGVMNMPKSVHSLKPSDI  
 KFVAAIGNLEIPDPGTGDLEKQDWTERPQQVCMGMVMTVLSDIIRYFSPVMPVCHTGKRVIPHDGAED  
 LWIQAQELVRNMKENLQLDFQFDWKLINVFFSNASQCYLCPAQNGLAAGGVDELGMVLDYLDYQEVPR  
 FVNLDLSEVAEVSRYHGTWLSPAPEPCNCSEETTRLAKVVMQWSYQEAWSNLLASSRYSEQESFTVVF  
 QPFFYETTPSLHSEDPRLQDSTTLAWHLWNRMMEPAGEKDEPLSVKHGRPMKCPSESPLYFSYRNSNYL  
 TRLQKPQDKLEVREGAEIRCPDKDPSDTVPTSVHRLKPADINVIGALGDSLTAGNGAGSTPGNVLDVLTQ  
 YRGLSWSVGGDENIGTVTTLANILREFNPSLKGFSVGTGKETSPNAFLNQAVAGGRAEDLPVQARRLVLD  
 MKNDTRIHFAQEDWKIITLFIGGNDLCDFCNDLVHYSQNFDTNIGKALDILHAEVPRFVNLVTVLEIVN  
 LRELYQEKKVYCPMILRSLCPCVLKFDNSTELATLIEFNKKFQEKTHQLIESGRYDTREDFTVVVQPF  
 FENVDMPKTSEGLPDNSFFAPDCFHFSKSHSRAASALWNNMLEPVGQKTRRHKFENKINICPNQVQPF  
 LRTYKNSMQGHGTWLPDRAPSALHPTSVHALRPADIQVVAALGDSLTAGNGIGSKPDDLDPVTTQYRG  
 LSYSAGGDGSLNVTLLPNILREFNRNLTGYAVGTGDANDTNAFLNQAVPGAKAEDLMSQVQTLMQMKMD  
 DHRVNFHEDWKVITVLIGGSDLCDYCTDSNLYSAANFVDHLRNALDVLHREVPRVLVNLVDFLNPTIMRQ  
 VFLGNPKCPVQQASVLCNCVLTRENSQELARLEAFSRAVSSMRELVGSGRYDTQEDFSWLQPPFFQN  
 IQLPVADGLPDTSEFFAPDCIHPNQKFHSQLARALWNTMLEPLGSKTETLDRAMPITCPTQNEPFLRT  
 PRNSNYTYPIKPAIENWGSDFLCTEWEKASNSVPTSVHQLRPADIKVVAALGDSLTTAVGARPNNSSDLPT  
 SWRGLSWSIGGDGNLEHTTLPNILKKNPNYLLGFSTSTWEGTAGLNVAEAGARARDMPAQAWDLVERMK  
 NSPDINLEKDWKLVTLFIGVNDLCHYCENPEAHLATEYVQHIQQALDILSEELPRAFVNVVEVMELASLY  
 QGQGGKCAMLAAQNNCTCLRHSQSSLEKQELKKNWNLQHGSSFSYWHQYTRQREDFAVVQPPFFQNTLT  
 PLNERGDTDLTFFSEDCFHFSRGAEMAIALWNNMLEPVGRKTTSNFTHSRAKLCPSPEPPLYTLR  
 NSRLLPDQAEAEVLYWAVPVAAGVGLVVGIIIGTVVWRCRRGGRRPPMSLRTVAL

TRTRPLEQKLISEEDLAANDILDYKDDDDKV

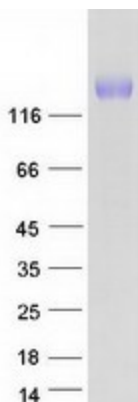
**Tag:** C-Myc/DDK  
**Predicted MW:** 162.9 kDa



[View online >](#)

<b>Concentration:</b>	>0.05 µg/µL as determined by microplate BCA method
<b>Purity:</b>	> 80% as determined by SDS-PAGE and Coomassie blue staining
<b>Buffer:</b>	25 mM Tris-HCl, 100 mM glycine, pH 7.3, 10% glycerol
<b>Preparation:</b>	Recombinant protein was captured through anti-DDK affinity column followed by conventional chromatography steps.
<b>Note:</b>	For testing in cell culture applications, please filter before use. Note that you may experience some loss of protein during the filtration process.
<b>Storage:</b>	Store at -80°C.
<b>Stability:</b>	Stable for 12 months from the date of receipt of the product under proper storage and handling conditions. Avoid repeated freeze-thaw cycles.
<b>RefSeq:</b>	<a href="#">NP_694566</a>
<b>Locus ID:</b>	151056
<b>UniProt ID:</b>	<a href="#">Q6P1J6</a> , <a href="#">B2RWP8</a>
<b>RefSeq Size:</b>	5063
<b>Cytogenetics:</b>	2p23.2
<b>RefSeq ORF:</b>	4374
<b>Synonyms:</b>	PLB; PLB/LIP
<b>Summary:</b>	This gene encodes a membrane-associated phospholipase that displays lysophospholipase and phospholipase A2 activities through removal of sn-1 and sn-2 fatty acids of glycerophospholipids. In addition, it displays lipase and retinyl ester hydrolase activities. The encoded protein is highly conserved and is composed of a large, glycosylated extracellular domain composed of four tandem homologous domains, followed by a hydrophobic segment that anchors the enzyme to the membrane and a short C-terminal cytoplasmic tail. This gene has been identified as a candidate rheumatoid arthritis risk gene. [provided by RefSeq, Jul 2016]
<b>Protein Families:</b>	Transmembrane

### Product images:



Coomassie blue staining of purified PLB1 protein (Cat# [TP318730]). The protein was produced from HEK293T cells transfected with PLB1 cDNA clone (Cat# [RC218730]) using MegaTran 2.0 (Cat# [TT210002]).

