

Product datasheet for **TP318730**

Phospholipase A2 (PLB1) (NM_153021) Human Recombinant Protein

Product data:

Product Type:	Recombinant Proteins
Description:	Recombinant protein of human phospholipase B1 (PLB1), 20 µg
Species:	Human
Expression Host:	HEK293T



[View online »](#)

Expression cDNA Clone or AA Sequence: >RC218730 representing NM_153021
Red=Cloning site Green=Tags(s)

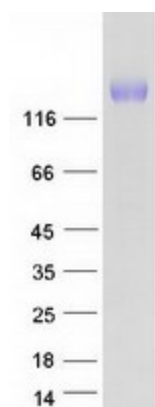
MGLRPGIFLELLLLLLGQGTPQIHTSPRKSTLEGQLWPETLKNSPFPCNPKNLGVNMPSKSVHSLKPSDI
 KFVAAIGNLEIPPDPGTGDLEKQDWTERPQQVCMGMVTVLSDIIRYFSPSPMPVCHTGKRVIPHDGAED
 LWIQAQELVRNMKENLQLDFQFDWKLINVFFSNASQCYLCPSAQQNGLAAGGVDELGMGVL DYLQQEVP
 RA
 FVNLVDLSEVAEVSQRQYHGTWLSPAPEPCNCSEETRLAKVVMQWSYQEAWNSLLASSRYSEQESFTVWF
 QPFFYETTPSLHSEDPRLQDSTTLAWHLWNRMMEPAGEKDEPLSVKHGRPMKPCSPQESPYLFSYRNSNY
 L
 TRLQKPQDKLEVREGAEIRCPDKDPSDTPVTSVHRLKPADINVIGALGDSL TAGNGAGSTPGNVLDVLTQ
 YRGLSWSVGGDENIGTVTTLANILREFNPSLKGFSVGTGKETSPNAFLNQAVAGGRAEDLPVQARRLVDL
 MKNDTRIH FQEDWKIITLFIGGNDLDCFCNDLVHYSQNFDTNIGKALDILHAEVPRAFVNLVTVLEIVN
 LRELYQEKKVYCPMILRSLCPCVLKFDDNSTELATLIEFNKKFQEKTHQLIESGRYDTREDFTVWVQPF
 FENVDMPKTSEGLPDNSFFAPDCFHFSKSHSRAASALWNNMLEPVGQKTRRHKFENKINITCPNQVQP
 F
 LRTYKNSMQGHGTWLPDRAPSALHPTSVHALRPADIQVVAALGDSL TAGNGIGSKPDDLDPDVTQYR
 G
 LSYSAGGDGSL ENVTLLPNILREFNRNLTGYAVGTGDANDTNAFLNQAVPGAKAEDLMSQVQTLMQKM
 KD
 DHRVNFHEDWKVITVLIGGSDLCDYCTDSNLYSAANFVDHLRNALDVLHREVPRVLVNLVDFLNPTIMRQ
 VFLGNPDKCPVQQASVLCNCVLTRENSQELARLEAFSRAYRSSMRELVGSGRYDTQEDFSVVLQPPFQN
 IQLPVLADGLPDTSEFFAPDCIHPNQKFHSQ LARALWTNMLEPLGSKTETLDLRAEMPITCPTQNEPFLRT
 PRNSNYTYPIKPAIENWGSDFLCTEWKASNSVPTSVHQLRPADIKVVAALGDSLTTAVGARPNNSSDLPT
 SWRGLSWSIGGDGNLEHTTLPNILKKFNYPYLLGFSTSTWEGTAGLNVAEAGARARDMPAQAWDLVERM
 K
 NSPDINLEKDWKLVTLFIGVNDLCHYCENPEAHLATEYVQHIQQALDILSEELPRAFVNVEVMELASLY
 QGQGGKCAMLAAQNNCTCLRHSQSSLEKQELKKVNWNLQHGISSFSYWHQYTQREDFAVVWVQPPFQN
 TLT
 PLNERGDTDLTFFSEDCFHFSDRGHAEMAIALWNNMLEPVGRKTTSNFTHSRAKLCPCSPESPYLTLR
 NSRLLPDQAEAEPEVLYWAVPVAAGVGLVVGIIIGTVVWRCRRGGRRREDPPMSLRTVAL

TRTRPLEQKLISEEDLAANDILDYKDDDDKV

Tag: C-Myc/DDK
Predicted MW: 162.9 kDa
Concentration: >0.05 µg/µL as determined by microplate BCA method
Purity: > 80% as determined by SDS-PAGE and Coomassie blue staining
Buffer: 25 mM Tris-HCl, 100 mM glycine, pH 7.3, 10% glycerol
Preparation: Recombinant protein was captured through anti-DDK affinity column followed by conventional chromatography steps.

Note:	For testing in cell culture applications, please filter before use. Note that you may experience some loss of protein during the filtration process.
Storage:	Store at -80°C.
Stability:	Stable for 12 months from the date of receipt of the product under proper storage and handling conditions. Avoid repeated freeze-thaw cycles.
RefSeq:	NP_694566
Locus ID:	151056
UniProt ID:	Q6P1J6
RefSeq Size:	5063
Cytogenetics:	2p23.2
RefSeq ORF:	4374
Synonyms:	PLB; PLB/LIP
Summary:	This gene encodes a membrane-associated phospholipase that displays lysophospholipase and phospholipase A2 activities through removal of sn-1 and sn-2 fatty acids of glycerophospholipids. In addition, it displays lipase and retinyl ester hydrolase activities. The encoded protein is highly conserved and is composed of a large, glycosylated extracellular domain composed of four tandem homologous domains, followed by a hydrophobic segment that anchors the enzyme to the membrane and a short C-terminal cytoplasmic tail. This gene has been identified as a candidate rheumatoid arthritis risk gene. [provided by RefSeq, Jul 2016]
Protein Families:	Transmembrane

Product images:



Coomassie blue staining of purified PLB1 protein (Cat# TP318730). The protein was produced from HEK293T cells transfected with PLB1 cDNA clone (Cat# [RC218730]) using MegaTran 2.0 (Cat# [TT210002]).