

## Product datasheet for TP318704L

### Collagen VI (COL6A2) (NM\_058174) Human Recombinant Protein

#### Product data:

**Product Type:** Recombinant Proteins  
**Description:** Recombinant protein of human collagen, type VI, alpha 2 (COL6A2), transcript variant 2C2a, 1 mg  
**Species:** Human  
**Expression Host:** HEK293T  
**Expression cDNA Clone or AA Sequence:** >RC218704 representing NM\_058174  
Red=Cloning site Green=Tags(s)

MLQGTCSVLLWLGILGAIQAQQEVISPDTERNNNCPEKTDCEPIHVYFVLDTSSEVTMQSPTDILLFHM  
 KQFVPQFISQLQNEFYLDQVALSWRYGGLHFSDQVEVFSPPGSDRASFIKLNQGISSFRRGTFTDCALAN  
 MTEQIRQDRSKGTVHFAVITDGHVGTGSPCGGIKQAERAREEGIRLFAVAPNQLKEQGLRDIASPH  
 LYRNDYATMLPDSTEINQDTINRIIKVMKHEAYGECYKVSLEIPGPSGPKGYRGQKGAKNMGEPGEPG  
 QKGRQGDPIEGPIGFPKGVPGFKGEKGEFGADGRKGAPLAGKNGTDGQKGLGRIGPPGCKGDPGN  
 RGPDPGYPGEAGSPGERGDQGGKGDPRPGRGPPGEIGAKGSKGYQGNNGAPGSPGVKGAKGPPGPRGPK  
 GEPGRRGDPGTKGSPGSDGPKGEKGDPEGPRGLAGEVGNKGAKGDRGLPGPRGPQGALGEPGKQGSRG  
 DPGDAGPRGDSGQPGPKGDPGRPGFSYPGRGAPGEKGEPPRGPPEGGRGDFLKGEPGRKGEKGEPADP  
 GPPGEPGPRGPRGVPGEPEGPPGDPGLTECDVMYVRETCCDCCKRCGALDVFVIDSSESIGYTN  
 FTLEKNFVINVNRLGAIKDPKSETGTRVGVVQYSHEGTFEAIQLDDEHIDLSKFKEAVKNLEWIAGG  
 TWTPSALKFAYDRLIKESRRQKTRVFAVITDGRHDPDRDDLNLRALCDRDTVTAIGIDMFHEKHESE  
 NLYSIACDKPQQVRNMTLFSDLVAEKFIDDMEDVLCPPDQIVCPDLPCQTDAPWPGGEPVTLRTEEGP  
 DATFPRTIPLIQLLNATELTQDPAAYSQLVAVLVYTAERAKFATGVERQDWMELFIDTFKLVHRDIVGD  
 PETALALC

SGPTRRRLEQKLISEEDLAANDILDYKDDDDKV

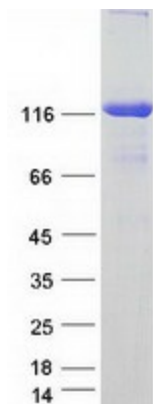
**Tag:** C-Myc/DDK  
**Predicted MW:** 95.3 kDa  
**Concentration:** >0.05 µg/µL as determined by microplate BCA method  
**Purity:** > 80% as determined by SDS-PAGE and Coomassie blue staining  
**Buffer:** 25 mM Tris-HCl, 100 mM glycine, pH 7.3, 10% glycerol  
**Preparation:** Recombinant protein was captured through anti-DDK affinity column followed by conventional chromatography steps.



[View online »](#)

<b>Note:</b>	For testing in cell culture applications, please filter before use. Note that you may experience some loss of protein during the filtration process.
<b>Storage:</b>	Store at -80°C.
<b>Stability:</b>	Stable for 12 months from the date of receipt of the product under proper storage and handling conditions. Avoid repeated freeze-thaw cycles.
<b>RefSeq:</b>	<a href="#">NP_478054</a>
<b>Locus ID:</b>	1292
<b>UniProt ID:</b>	<a href="#">P12110</a>
<b>RefSeq Size:</b>	3145
<b>Cytogenetics:</b>	21q22.3
<b>RefSeq ORF:</b>	2754
<b>Synonyms:</b>	BTHLM1; PP3610; UCMD1
<b>Summary:</b>	This gene encodes one of the three alpha chains of type VI collagen, a beaded filament collagen found in most connective tissues. The product of this gene contains several domains similar to von Willebrand Factor type A domains. These domains have been shown to bind extracellular matrix proteins, an interaction that explains the importance of this collagen in organizing matrix components. Mutations in this gene are associated with Bethlem myopathy and Ullrich scleroatonic muscular dystrophy. Three transcript variants have been identified for this gene. [provided by RefSeq, Jul 2008]
<b>Protein Families:</b>	Secreted Protein
<b>Protein Pathways:</b>	ECM-receptor interaction, Focal adhesion

### Product images:



Coomassie blue staining of purified COL6A2 protein (Cat# [TP318704]). The protein was produced from HEK293T cells transfected with COL6A2 cDNA clone (Cat# [RC218704]) using MegaTran 2.0 (Cat# [TT210002]).