

Product datasheet for TP318704

Collagen VI (COL6A2) (NM_058174) Human Recombinant Protein

Product data:

Product Type: Recombinant Proteins
Description: Recombinant protein of human collagen, type VI, alpha 2 (COL6A2), transcript variant 2C2a, 20 µg
Species: Human
Expression Host: HEK293T
Expression cDNA Clone or AA Sequence: >RC218704 representing NM_058174
Red=Cloning site Green=Tags(s)

MLQGTCSVLLWLGILGAIQAQQEVISPDTERNNNCPEKTDCEPIHVYFVLDTSSEVTMQSPTDILLFHM
 KQFVPQFISQLQNEFYLDQVALSWRYGGLHFSDQVEVFSPPGSDRASFIKLNQGISSFRRGTFTDCALAN
 MTEQIRQDRSKGTVHFVAVITDGHVTGSPCGGIKQAERAREEGIRLFAVAPNQLKEQGLRDIASSTPHE
 LYRNDYATMLPDSTEINQDTINRIIKVMKHEAYGECYKVSLEIPGPSGPKGYRGQKGAKNMGEPGEPG
 QKGRQGDPIEGPIGFPKGVPGFKGEKGEFGADGRKGAPGLAGKNGTDGQKGLGRIGPPGCKGDPGN
 RGPDPGYPGEAGSPGERGDQGGKGDPRPGRGPPGEIGAKGSKGYQGNNGAPGSPGVKGAKGPPGPRGPK
 GEPGRRGDPGTKGSPGSDGPKGEKGDPEGPRGLAGEVGNKGAKGDRGLPGPRGPQGALGEPGKQGSRG
 DPGDAGPRGDSGQPGPKGDPGRPGFSYPGRGAPGEKGEPPRGPPEGGRGDFLKGEPGRKGEKGEPADP
 GPPGEPGPRGPRGVPGEPEGPPGDPGLTECDVMTYVRETCCDCCKRCGALDVVFVIDSSESIGYTN
 FTLEKNFVINVNRLGAIKDPKSETGTRVGVVQYSHEGTFEAIQLDDEHIDSLSSFKEAVKNLEWIAGG
 TWTPSALKFAYDRLIKESRRQKTRVFAVITDGRHDPDRDDLNLRALCDRDVTVTAIGIDMFHEKHESE
 NLYSIACDKPQQVRNMTLFSDLVAEKFIDDMEDVLCPPDQIVCPDLPCQTDAPWPGGEPVTFLRTEEGP
 DATFPRTIPLIQLLNATELTQDPAAYSQLVAVLVYTAERAKFATGVERQDWMELFIDTFKLVHRDIVGD
 PETALALC

SGPTRRRLEQKLISEEDLAANDILDYKDDDDKV

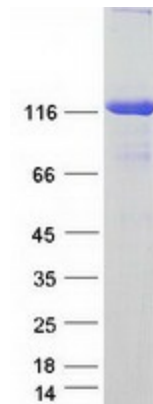
Tag: C-Myc/DDK
Predicted MW: 95.3 kDa
Concentration: >0.05 µg/µL as determined by microplate BCA method
Purity: > 80% as determined by SDS-PAGE and Coomassie blue staining
Buffer: 25 mM Tris-HCl, 100 mM glycine, pH 7.3, 10% glycerol
Preparation: Recombinant protein was captured through anti-DDK affinity column followed by conventional chromatography steps.



[View online »](#)

Note:	For testing in cell culture applications, please filter before use. Note that you may experience some loss of protein during the filtration process.
Storage:	Store at -80°C.
Stability:	Stable for 12 months from the date of receipt of the product under proper storage and handling conditions. Avoid repeated freeze-thaw cycles.
RefSeq:	NP_478054
Locus ID:	1292
UniProt ID:	P12110
RefSeq Size:	3145
Cytogenetics:	21q22.3
RefSeq ORF:	2754
Synonyms:	BTHLM1; PP3610; UCMD1
Summary:	This gene encodes one of the three alpha chains of type VI collagen, a beaded filament collagen found in most connective tissues. The product of this gene contains several domains similar to von Willebrand Factor type A domains. These domains have been shown to bind extracellular matrix proteins, an interaction that explains the importance of this collagen in organizing matrix components. Mutations in this gene are associated with Bethlem myopathy and Ullrich scleroatonic muscular dystrophy. Three transcript variants have been identified for this gene. [provided by RefSeq, Jul 2008]
Protein Families:	Secreted Protein
Protein Pathways:	ECM-receptor interaction, Focal adhesion

Product images:



Coomassie blue staining of purified COL6A2 protein (Cat# TP318704). The protein was produced from HEK293T cells transfected with COL6A2 cDNA clone (Cat# [RC218704]) using MegaTran 2.0 (Cat# [TT210002]).