

## Product datasheet for **TP318686L**

### SEPTIN6 (NM\_145800) Human Recombinant Protein

#### Product data:

Product Type:	Recombinant Proteins
Description:	Recombinant protein of human septin 6 (SEPT6), transcript variant III, 1 mg
Species:	Human
Expression Host:	HEK293T
Expression cDNA Clone or AA Sequence:	>RC218686 representing NM_145800 <b>Red</b> =Cloning site <b>Green</b> =Tags(s)
	<p>MAATDIARQVGEGRCTVPLAGHVGFDLSPDQLVNKSVSQGFCFNILCVGETGLGKSTLMDTLFNTKFEGE PATHTQPGVQLQSNTYDLQESNVRLKLTIVSTVGFQDINKEDSYKPIVEFIDAQFEAYLQEELKIRRVL HTYHDSRIHVCLYFIAPTGHSLKSLDLVTMKKLDSKVNIIPIAKADAISKSELTKFKIKITSELVSNV QIYQFPTDDESVAEINGTMNAHLPFAVIGSTEELKIGNKMMRARQYPWGTQVENEAHCDFVKLREMLIR VNMEDLREQTHTRHYELYRCKLEEMGFKDTPDPSKPFSLQETYEAKRNEFLGELQKKEEEMRQMFVQVR KEKEAELKEAKELHEKFDRLKHLHQDEKKKLEDKKKSLDDEVNAFKQRKTA AELLQSQGSQAGGSQTLK RDKEKKN</p> <p><b>TRTRPLEQKLISEEDLAANDILDYKDDDDKV</b></p>
Tag:	C-Myc/DDK
Predicted MW:	48.7 kDa
Concentration:	>0.05 µg/µL as determined by microplate BCA method
Purity:	> 80% as determined by SDS-PAGE and Coomassie blue staining
Buffer:	25 mM Tris-HCl, 100 mM glycine, pH 7.3, 10% glycerol
Preparation:	Recombinant protein was captured through anti-DDK affinity column followed by conventional chromatography steps.
Note:	For testing in cell culture applications, please filter before use. Note that you may experience some loss of protein during the filtration process.
Storage:	Store at -80°C.
Stability:	Stable for 12 months from the date of receipt of the product under proper storage and handling conditions. Avoid repeated freeze-thaw cycles.
RefSeq:	<u><a href="#">NP_665799</a></u>

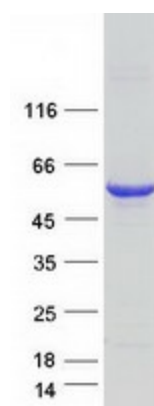


[View online »](#)

Locus ID:	23157
UniProt ID:	<a href="#">Q14141</a> , <a href="#">Q541S4</a>
RefSeq Size:	2620
Cytogenetics:	Xq24
RefSeq ORF:	1281
Synonyms:	SEP2; SEPT2; SEPT6

**Summary:** This gene is a member of the septin family of GTPases. Members of this family are required for cytokinesis. One version of pediatric acute myeloid leukemia is the result of a reciprocal translocation between chromosomes 11 and X, with the breakpoint associated with the genes encoding the mixed-lineage leukemia and septin 2 proteins. This gene encodes four transcript variants encoding three distinct isoforms. An additional transcript variant has been identified, but its biological validity has not been determined. [provided by RefSeq, Jul 2008]

### Product images:



Coomassie blue staining of purified SEPTIN6 protein (Cat# [TP318686]). The protein was produced from HEK293T cells transfected with SEPTIN6 cDNA clone (Cat# [RC218686]) using MegaTran 2.0 (Cat# [TT210002]).