

## Product datasheet for **TP318642L**

### **BSPRY (NM\_017688) Human Recombinant Protein**

#### **Product data:**

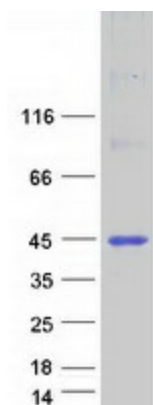
Product Type:	Recombinant Proteins
Description:	Recombinant protein of human B-box and SPRY domain containing (BSPRY), 1 mg
Species:	Human
Expression Host:	HEK293T
Expression cDNA Clone or AA Sequence:	>RC218642 representing NM_017688 <b>Red</b> =Cloning site <b>Green</b> =Tags(s)
	MSAEGAEPGPGSGSGPGPGPLCPEHGQALSWFCGSERRPVCAACAGLGGRGCRGHRIRRAEERAEELRNKI VDQCERLQLQSAAITKYVADVLPGKNQRAVSMASAARELVIQRLSLVRLCESEEQRLLQVHGEEERAH QSILTQRVHWAEALQKLDTIRTGLVGMLTHLDDLQLIQKEQEIFERTEEAEGILDPQESEMNFNEKCTR SPLLTQLWATAVLGSLSGTEDIRIDERTVSPFLQLSDDRKTTLTFSTKSKACADGPERFDHWPNALAATS FQNGLHAWMVNVQNSCAYKVGVASGHLPRKSGSGDCRLGHNAFSWVFSRYDQEFRFSHNGQHEPLGL LRG PAQLGVLDLQVQELLFYEPASGTVLCAHHVSFPGLFPVFAVADQTISIVR
	<b>TRTRPLEQKLISEEDLAANDILDYKDDDDKV</b>
Tag:	C-Myc/DDK
Predicted MW:	44.2 kDa
Concentration:	>0.05 µg/µL as determined by microplate BCA method
Purity:	> 80% as determined by SDS-PAGE and Coomassie blue staining
Buffer:	25 mM Tris-HCl, 100 mM glycine, pH 7.3, 10% glycerol
Preparation:	Recombinant protein was captured through anti-DDK affinity column followed by conventional chromatography steps.
Note:	For testing in cell culture applications, please filter before use. Note that you may experience some loss of protein during the filtration process.
Storage:	Store at -80°C.
Stability:	Stable for 12 months from the date of receipt of the product under proper storage and handling conditions. Avoid repeated freeze-thaw cycles.
RefSeq:	<u>NP_060158</u>



[View online »](#)

Locus ID:	54836
UniProt ID:	<a href="#">Q5W0U4</a>
RefSeq Size:	2354
Cytogenetics:	9q32
RefSeq ORF:	1206
Summary:	May regulate epithelial calcium transport by inhibiting TRPV5 activity.[UniProtKB/Swiss-Prot Function]
Protein Families:	Druggable Genome

### Product images:



Coomassie blue staining of purified BSPRY protein (Cat# [TP318642]). The protein was produced from HEK293T cells transfected with BSPRY cDNA clone (Cat# [RC218642]) using MegaTran 2.0 (Cat# [TT210002]).