

## Product datasheet for **TP318563M**

### CHMP2A (NM\_198426) Human Recombinant Protein

#### Product data:

Product Type:	Recombinant Proteins
Description:	Recombinant protein of human chromatin modifying protein 2A (CHMP2A), transcript variant 2, 100 µg
Species:	Human
Expression Host:	HEK293T
Expression cDNA Clone or AA Sequence:	>RC218563 protein sequence <b>Red</b> =Cloning site <b>Green</b> =Tags(s)

MDLLFGRRKTPEELLRQNQRALNRAMRELD RERQKLETQEKKIADIKKMAKQGQMDAVRIMAKDLVRTR  
RYVRKFLMRANIQAVSLKIQTLKSNNSMAQAMKGVTKAMGTMNRQLKLPQIQKIMMEFERQAEIMDMKE  
EMMND AIDDAMGDEEDEEESDAVVSQVLDELGLSLTDELSNLPSTGGSLVAAGGKKAEEAASALADADA  
DLEERLKNLRRD

**TRTRPLEQKLISEEDLAANDILDYKDDDDKV**

Tag:	C-Myc/DDK
Predicted MW:	24.9 kDa
Concentration:	>0.05 µg/µL as determined by microplate BCA method
Purity:	> 80% as determined by SDS-PAGE and Coomassie blue staining
Buffer:	25 mM Tris-HCl, 100 mM glycine, pH 7.3, 10% glycerol
Preparation:	Recombinant protein was captured through anti-DDK affinity column followed by conventional chromatography steps.
Note:	For testing in cell culture applications, please filter before use. Note that you may experience some loss of protein during the filtration process.
Storage:	Store at -80°C.
Stability:	Stable for 12 months from the date of receipt of the product under proper storage and handling conditions. Avoid repeated freeze-thaw cycles.
RefSeq:	<a href="#">NP_940818</a>
Locus ID:	27243



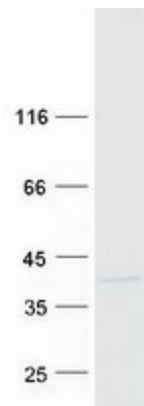
[View online »](#)

UniProt ID: [Q43633](#), [A0A024R4S0](#)  
RefSeq Size: 943  
Cytogenetics: 19q13.43  
RefSeq ORF: 666  
Synonyms: BC-2; BC2; CHMP2; VPS2; VPS2A

**Summary:** CHMP2A belongs to the chromatin-modifying protein/charged multivesicular body protein (CHMP) family. These proteins are components of ESCRT-III (endosomal sorting complex required for transport III), a complex involved in degradation of surface receptor proteins and formation of endocytic multivesicular bodies (MVBs). Some CHMPs have both nuclear and cytoplasmic/vesicular distributions, and one such CHMP, CHMP1A (MIM 164010), is required for both MVB formation and regulation of cell cycle progression (Tsang et al., 2006 [PubMed 16730941]).[supplied by OMIM, Mar 2008]

**Protein Pathways:** Endocytosis

### Product images:



Coomassie blue staining of purified CHMP2A protein (Cat# [TP318563]). The protein was produced from HEK293T cells transfected with CHMP2A cDNA clone (Cat# [RC218563]) using MegaTran 2.0 (Cat# [TT210002]).