

## Product datasheet for **TP318556L**

### PDZD6 (INTU) (NM\_015693) Human Recombinant Protein

#### Product data:

Product Type:	Recombinant Proteins
Description:	Recombinant protein of human intuned planar cell polarity effector homolog (Drosophila) (INTU), 1 mg
Species:	Human
Expression Host:	HEK293T
Expression cDNA Clone or AA Sequence:	>RC218556 representing NM_015693 <b>Red</b> =Cloning site <b>Green</b> =Tags(s)

MASVASCDSRPSSDELPGDPSSQEEDDYDFEDRVSDSGSYSSASSDYDDLEPEWLDSVQKNGELFYLEL  
SEDEEESLLPETPTVNHVRFSENEIIIEDDYKERKKYEPKQFTKILRRKLLPKRCNKNSNDNGPVS  
ILKHQSNQKTGVIVQQRKYKDVNVVYVNPVKLVKAKEQLKLEVLVGIHQTKWSWRRTGKQGDGERLW  
HGLLPGGSAMKSGQVLIGDVLVAVNDVDVTTENIERVLSLCPGPMQVKLTFENAYDVKRETSHPRQKKTQ  
SNTSDLVKLLWGEEVEGIQQSGLNTPHIIMYLTQLDSETSKEEQEILYHYPMSEASQKLKSVRGIFLTL  
CDMLENVTGTQVTSSLLNGKQIHVAYWKESDKLLIGLPAEEVPLPRLRNMIENVIQTLKFMYGSLDS  
AFCQIENVPRLDHFFNLFFQRALQPAKLHSSASPSAQYDASSAVLLDNLPGVRWLTLPLEIKMELDMAL  
SDLEAADFAELSEDYDMRRLYTLGSSLFYKGYLICSHLPKDDLIDIAVYCRHYCLPLAAKQRIGQLI  
IWREVFQHHLRPLADSSTEVFPEPEGRYFLLVGLKHYMLCVLLEAGGCASKAIGSPGPDVYDQVKT  
TLHQLDGVDSRIDERLASSPVPCLSCADWFLTGSREKTDLSLTTSPILSRLQGTSKVATSPTCRRTLFQDY  
SLKTRKPSPCSSGGSDNGCEGGEDDGFSPHTTPDAVRKQRESQSGDGLSESGTLLKVTKKSTLPNPFH  
LGNLKKDLPEKELEIYNTVKLTSGPENTLFHYVALETVQGIFITPTLEEVAQLSGSIHPQLIKNFHQCL  
SIRAVFQQTLVEEKKKGLNSGDHSDSAKSVSSLNPVKEHGVLFECSPGNWTDQKKAPPVMAYWVWGRFLF  
HPKPQELYVCFHDSVTEIAIEIAFKLFFGLTL

**TRTRPLEQKLISEEDLAANDILDYKDDDDKV**

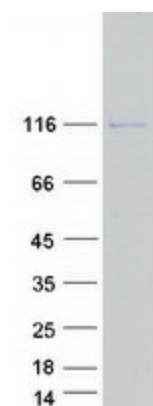
Tag:	C-Myc/DDK
Predicted MW:	105.5 kDa
Concentration:	>0.05 µg/µL as determined by microplate BCA method
Purity:	> 80% as determined by SDS-PAGE and Coomassie blue staining
Buffer:	25 mM Tris-HCl, 100 mM glycine, pH 7.3, 10% glycerol



[View online »](#)

<b>Preparation:</b>	Recombinant protein was captured through anti-DDK affinity column followed by conventional chromatography steps.
<b>Note:</b>	For testing in cell culture applications, please filter before use. Note that you may experience some loss of protein during the filtration process.
<b>Storage:</b>	Store at -80°C.
<b>Stability:</b>	Stable for 12 months from the date of receipt of the product under proper storage and handling conditions. Avoid repeated freeze-thaw cycles.
<b>RefSeq:</b>	<a href="#">NP_056508</a>
<b>Locus ID:</b>	27152
<b>UniProt ID:</b>	<a href="#">Q9ULD6</a>
<b>RefSeq Size:</b>	3238
<b>Cytogenetics:</b>	4q28.1
<b>RefSeq ORF:</b>	2826
<b>Synonyms:</b>	CPLANE4; INT; OFD17; PDZD6; PDZK6; SRTD20
<b>Summary:</b>	Plays a key role in ciliogenesis and embryonic development. Regulator of cilia formation by controlling the organization of the apical actin cytoskeleton and the positioning of the basal bodies at the apical cell surface, which in turn is essential for the normal orientation of elongating ciliary microtubules. Plays a key role in definition of cell polarity via its role in ciliogenesis but not via conversion extension. Has an indirect effect on hedgehog signaling (By similarity). Proposed to function as core component of the CPLANE (ciliogenesis and planar polarity effectors) complex involved in the recruitment of peripheral IFT-A proteins to basal bodies (PubMed:27158779).[UniProtKB/Swiss-Prot Function]

### Product images:



Coomassie blue staining of purified INTU protein (Cat# [TP318556]). The protein was produced from HEK293T cells transfected with INTU cDNA clone (Cat# [RC218556]) using MegaTran 2.0 (Cat# [TT210002]).